



35 Yamba Street, Pacific Pines

4 2 2

Immaculate Family Home — Space, Style & Serenity

This stunning family home offers the perfect blend of modern design, functionality, and lifestyle appeal. Elevated to capture winter sun, cooling summer breezes, and sweeping views, it's a property that delivers comfort and sophistication in every detail.

Features You'll Love

- " 4 spacious bedrooms —all with ceiling fans; master suite with air conditioning
- 2 stylish bathrooms with quality finishes
- Oversized double garage with side access
- Two separate living areas for family flexibility, both air-conditioned
- Contemporary kitchen with gas cooking, dishwasher, and ample storage
- Multiple outdoor entertaining zones, including a huge alfresco area
- " Solar power system for energy efficiency
- " Expansive 1,024m² block, landscaped with tropical and native plants for low maintenance

Lifestyle & Location

Enjoy a home designed for effortless family living and entertaining.

FOR SALE

Just Listed

AGENTS

Adam Hope
0417 654 153
adam.hope@ljhteam.com.au

AGENCY

LJ Hooker Pacific Pines | Helensvale
(07) 5573 2099

All information contained therein is gathered from relevant third parties sources.
We cannot guarantee or give any warranty about the information provided.
Interested parties must rely solely on their own enquiries.

LJ Hooker

Whether hosting summer barbecues under the alfresco or relaxing in the spacious living areas, this property offers a sanctuary for every season.

Convenience is key:

Close to local schools —perfect for families with children

Just a short drive to the M1, making commuting to Brisbane or the Gold Coast a breeze

Minutes from shopping centres, cafes, and essential amenities

Call Adam today to inspect this beautiful home!

Disclaimer:

All information contained is gathered from relevant third party sources. We cannot guarantee or give any warranty about the information provided. Interested parties must rely solely on their own enquiries.

MORE DETAILS

Property ID	35V2GMK
Property Type	House
Land Area	1024 m2

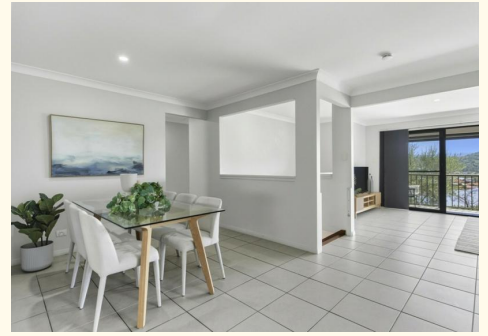
Adam Hope 0417 654 153

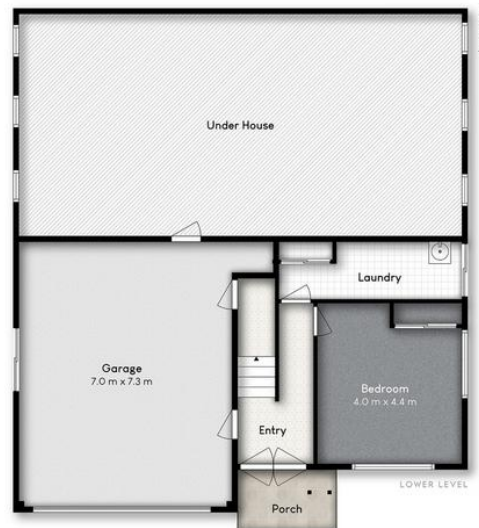
Owner | Principal | Sales Director | adam.hope@ljhteam.com.au

LJ Hooker Pacific Pines | Helensvale (07) 5573 2099

8 Discovery Drive, HELENSVALE QLD 4212

pacificpines-helensvale.ljhooker.com.au | admin@ljhteam.com.au





35 YAMBA STREET, PACIFIC PINES

 4  2  2

Internal: 245m² | External: 42m² | Total: 287m²

Whilst every attempt has been made to ensure the accuracy of the floor plan contained here, measurements of doors, windows, rooms and any other item are approximate and no responsibility is taken for any error, omission, or misstatement. This plan is for illustrative purposes only and should only be used as such by any prospective purchaser.

