

25 Shoalhaven Avenue, Pacific Pines

FABULOUS 4 BEDROOM & STUDY, IN FANTASTIC LOCATION CLOSE TO LOCAL SCHOOL AND PARKS

This fabulous family home is located in a super quiet location opposite a nature reserve and just a short stroll to the local primary school, bus stop, parks and sports oval. Its just 2 minutes to the local Coles super market, plus the M1 Motorway and Helensvale Westfield shopping center, train and light rail stations are all within a 5 minutes drive away.

The home has just been freshly painted inside and brand new carpet laid throughout last week.

The homes features include.

4 spacious bedrooms all with build in wardrobes and ceiling fans. The master bedroom has a walk in wardrobe and a private ensuite bathroom. It is also air conditioned.

There is also a separate office/study at the front of the home with

4  2  2 

FOR SALE

Offers Over \$1,100,000

VIEW

By Appointment

AGENTS

John Reason
0411 355 810
jreason@ljhteam.com.au

AGENCY

LJ Hooker Pacific Pines | Helensvale
(07) 5573 2099

All information contained therein is gathered from relevant third parties sources.
We cannot guarantee or give any warranty about the information provided.
Interested parties must rely solely on their own enquiries.



easy access from both the garage and the front door entry area.

A well laid out kitchen comes with plenty of bench and storage space and a huge walk in pantry. There is a ceramic cooktop, range hood, oven and a dishwasher.

The extra large open plan combined living area, is also air conditioned for your year round comfort.

Opening out from the living area there is a lovely covered and very private outdoor entertaining area, perfect to relax in after a long day.

An auto double garage with easy internal access to the study and living room.

The home was built in 2008, and is sited on a 427 square meter block.

For interested investors the property would currently rent for \$980 to \$1020 per week.

This property is in excellent condition, and is a fantastic opportunity for either an owner occupier, or investor looking for a home in this price range.

The owners are keen to affect a quick sale and have priced the property to meet the current market conditions.

Disclaimer:

All information contained is gathered from relevant third party sources. We cannot guarantee or give any warranty about the information provided. Interested parties must rely solely on their own enquiries.

MORE DETAILS

Property ID	35ZXGMK
Property Type	House
Land Area	427 m2
Including	Ensuite Study Air Conditioning Toilets (2) Dishwasher Outdoor Entertaining Built-in-Robes Fully Fenced Remote Garage

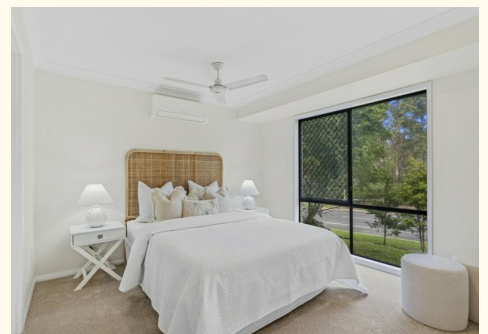
John Reason 0411 355 810

Sales Person | Licensed Real Estate Agent | jreason@ljhteam.com.au

LJ Hooker Pacific Pines | Helensvale (07) 5573 2099

8 Discovery Drive, HELENSVALE QLD 4212

pacificpines-helensvale.ljhooker.com.au | admin@ljhteam.com.au





25 SHOALHAVEN AVENUE, PACIFIC PINES

 4  2  2

Internal: 166m² | External: 20m² | Total: 186m²

Whilst every attempt has been made to ensure the accuracy of the floor plan contained here, measurements of doors, windows, rooms and any other item are approximate and no responsibility is taken for any error, omission, or misstatement. This plan is for illustrative purposes only and should only be used as such by any prospective purchaser.

