



22 Pago Terrace, Pacific Pines

## Family Living with Pool, Views & Side Access for extra parking

Positioned in this highly sought-after suburb, this beautifully presented residence delivers space, comfort, and effortless indoor-outdoor living. Elevated to capture cooling breezes and sweeping views towards the Gold Coast skyline and surrounding mountain ranges, the home sits on a generous 779m<sup>2</sup> block backing onto a peaceful reserve.

Designed with families in mind, the home features a spacious master suite complete with ensuite and walk-in robe, along with three additional well-sized bedrooms with built-in robes. A family bathroom and separate powder room add practicality, while multiple living zones-including a large upstairs family retreat and two separate living areas downstairs-ensure there's room for everyone to relax and unwind.

At the heart of the home, a light-filled open plan living, dining, and kitchen area creates a welcoming space for everyday living. The modern kitchen is well-appointed with ample storage and seamlessly connects to the expansive undercover outdoor entertaining area-perfect for hosting guests or enjoying the Gold Coast lifestyle year-round beside the sparkling in-ground pool. With bamboo flooring

4  2  2 

**FOR SALE**  
CONTACT AGENT

**VIEW**

Sat 11th Apr @ 9:30AM - 10:00AM

**AGENTS**

Tim Wolff  
0419 620 470  
twolff@ljhgc.com.au

Tracey Fisher  
0401 882 881  
tfisher@ljhgc.com.au

**AGENCY**

LJ Hooker Nerang  
(07) 5581 4422

All information contained therein is gathered from relevant third parties sources.  
We cannot guarantee or give any warranty about the information provided.  
Interested parties must rely solely on their own enquiries.

 **LJ Hooker**

upstairs, ducted air conditioning throughout, secure side access for a boat or caravan, and a fully fenced yard ideal for kids and pets, this home combines functionality with lifestyle appeal in one impressive package.

Master bedroom with ensuite and WIR  
3 further spacious bedrooms with BIR  
Family bathroom plus separate powder room  
Multiple living zones: large family room upstairs and 2 living areas downstairs  
Light-filled open plan living, dining & kitchen  
Modern, well-appointed kitchen with ample space and storage  
Bamboo flooring upstairs  
Ducted air conditioning throughout  
Large undercover outdoor entertaining area —perfect for hosting  
In ground pool  
Elevated position capturing summer breezes.  
Views to the Gold Coast skyline & surrounding mountain ranges  
Secure yard —ideal for kids and pets  
Double lock-up garage  
Secure side access for boat or caravan  
Additional off-street parking options  
779m<sup>2</sup> private block backing onto reserve  
Built 2002  
Situated in the highly sought-after Pacific Pines community  
Peaceful, private, setting with convenient access to local amenities

Set in the heart of the northern Gold Coast, Pacific Pines is a thriving, family-friendly community known for its atmosphere, leafy surrounds, and convenient access to schools, shops, and major transport links. Offering the perfect balance between lifestyle and location, residents enjoy proximity to the M1, Westfield Helensvale, and the stunning beaches the Gold Coast is famous for-making it an ideal place to call home.

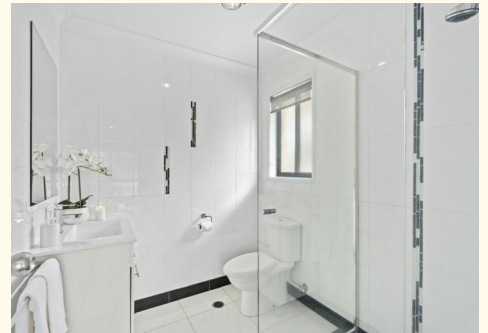
Disclaimer: Properties in Queensland that are for sale by auction or without a price can not have a price guide provided, unless specified in writing from the seller. This website may have filtered the property into a price bracket for website functionality purposes.

## MORE DETAILS

Property ID	5HW1F41
Property Type	House
Land Area	779 m2
Including	Pool Built-in-Robes

**Tim Wolff 0419 620 470**  
Sales Specialist | [twolff@ljhgc.com.au](mailto:twolff@ljhgc.com.au)  
**Tracey Fisher 0401 882 881**  
Sales Specialist | [tfisher@ljhgc.com.au](mailto:tfisher@ljhgc.com.au)

**LJ Hooker Nerang (07) 5581 4422**  
2-4 New Street, NERANG QLD 4211  
[nerang.ljhooker.com.au](http://nerang.ljhooker.com.au) | [nerang@ljhgc.com.au](mailto:nerang@ljhgc.com.au)





22 PAGO TERRACE, PACIFIC PINES

 4  2  2

Internal: 195m<sup>2</sup> | External: 74m<sup>2</sup> | Total: 269m<sup>2</sup>

Whilst every attempt has been made to ensure the accuracy of the floor plan contained here, measurements of doors, windows, rooms and any other item are approximate and no responsibility is taken for any error, omission, or misstatement. This plan is for illustrative purposes only and should only be used as such by any prospective purchaser.

