

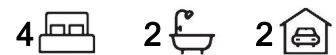


SOLD



Pacific Pines, 2 Wellers Street

Another one Sold by Team Wolff LJ Hooker



This home is in a prime location, nestled in a neighbourhood of quality homes on a huge 777m2 block. Freshly carpeted and painted, its ready for its new owner to move in. A superb layout with the family in mind, 3 of the bedrooms are on the upper level with a large living area and on the ground floor you have 1 bedroom with 2 separate living areas, offering space and versatility.

- Master bedroom with ensuite, WIR, and air conditioning on upper floor.
- Three additional bedrooms with BIR, perfect for a growing family.
- Fresh Updates, new carpets throughout the house and freshly painted
- Family bathrooms with vanity, shower and bath.
- Air conditioning in both upstairs and downstairs living area, Year-Round Comfort
- Functional Kitchen, Open-plan design with ample bench and storage space.
- Outdoor Entertainment, relax and entertain under the lovely undercover area.
- Spacious Yard, fully fenced for privacy, with plenty of room for a pool and kids to play.

For Sale
CONTACT AGENT

View
ljhooker.com.au/3546GMK

Contact
Tim Wolff
0419 620 470
twolff@ljhteam.com.au

Tracey Fisher
0401 882 881



LJ Hooker Pacific Pines | Helensvale
(07) 5573 2099

Disclaimer: All information contained therein is gathered from relevant third parties sources. We cannot guarantee or give any warranty about the information provided. Interested parties must rely solely on their own enquiries.

Secure double lock-up remote garage for convenience and safety.

30-day contract available for a hassle-free buying experience.

Corner block offering wide side access

Built in 2006: A solidly built home offering enduring quality.

Land Size: 777m2

Don't miss out on this incredible opportunity to own your dream family home

This home is only a short 3-5minute drive to the M1. Local schools and shops are only minutes away, being Coles, Woolworths, and Helensvale Westfield for retail shopping. In Helensvale you will also find the train station, making commuting to Brisbane an absolute breeze and the light rail, connecting the northern end of the Gold Coast to Southport, Surfers Paradise, and Broadbeach via quick and easy public transport. This quality home won't last long so call Tim Wolff or Tracey Fisher your local real estate agents, or we will see you at the open homes.

Disclaimer:

All information contained is gathered from relevant third party sources. We cannot guarantee or give any warranty about the information provided. Interested parties must rely solely on their own enquiries.

More About this Property

Property ID	3546GMK
Property Type	House
Land Area	777 m ²
Including	Air Conditioning Outdoor Entertaining Built-in-Robes

Tim Wolff 0419 620 470

Sales Specialist | twolff@ljhteam.com.au

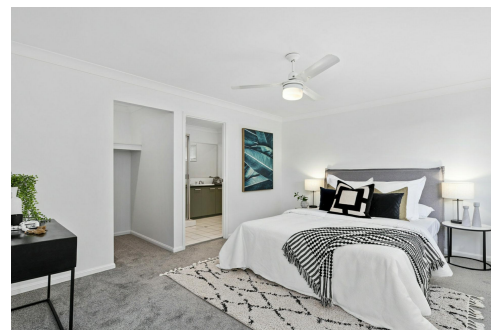
Tracey Fisher 0401 882 881

Sales Specialist

LJ Hooker Pacific Pines | Helensvale (07) 5573 2099

8 Discovery Drive, HELENSVALE QLD 4212

pacificpines-helensvale.ljhooker.com.au | admin@ljhteam.com.au



LJ Hooker

Disclaimer: All information contained therein is gathered from relevant third parties sources. We cannot guarantee or give any warranty about the information provided. Interested parties must rely solely on their own enquiries.

**LJ Hooker Pacific Pines | Helensvale
(07) 5573 2099**



2 WELLERS STREET, PACIFIC PINES

 4  2  2

Internal: 202m² | External: 20m² | Total: 222m²

Whilst every attempt has been made to ensure the accuracy of the floor plan contained here, measurements of doors, windows, rooms and any other item are approximate and no responsibility is taken for any error, omission, or misstatement. This plan is for illustrative purposes only and should only be used as such by any prospective purchaser.

