



# Pacific Pines, 17 Gerard Street

## Family Home With 3 Living

4 2 2

**For Sale**  
Contact Agent

---

**View**  
[ljhooker.com.au/42Y3GTJ](http://ljhooker.com.au/42Y3GTJ)

**Contact**  
**Robbie Dunn**  
0404 466 793  
[rdunn@ljhgc.com.au](mailto:rdunn@ljhgc.com.au)

Key Features:

- \* Spacious Bedrooms: 3 well-appointed bedrooms, each featuring built-in robes and ceiling fans
- \* Master with garden views, walk through robe and ensuite ensures a private sanctuary.
- \* Modern Bathrooms: Stylish main bathroom provide convenience for the whole family, with contemporary fixtures and finishes.
- \* Air Conditioning: Enjoy year-round comfort with reverse cycle air conditioning, keeping



**Disclaimer:** All information contained therein is gathered from relevant third parties sources. We cannot guarantee or give any warranty about the information provided. Interested parties must rely solely on their own enquiries.

**LJ Hooker Coomera**  
**(07) 5585 7888**

- you cool in summer and warm in winter.
- \* **Separate Dining Room:** Host family dinners or entertain guests in the elegant separate dining area, perfect for creating lasting memories.
  - \* **Outdoor Entertaining:** Step outside to your private garden, ideal for alfresco dining and weekend barbecues. The outdoor space is perfect for children and pets to play freely.
  - \* **Double Garage:** Secure parking for two vehicles ensures convenience and peace of mind.

This property is not just a house; it's a lifestyle. With its pet-friendly environment and proximity to local parks, schools, and shopping, 17 Gerard Street is perfect for families looking to settle in a vibrant community.

Located in the sought-after Pacific Pines, this quiet and peaceful area offers nearby parks, cafes, medical facilities, and grocery shopping with Woolworths and Coles. It's close to Pacific Pines Tavern, schools, and buses, with easy access to Westfield Helensvale, train station, and Light Rail. The M1 motorway provides a 55-minute drive to Brisbane and 45 minutes to Coolangatta Airport. Nearby are Griffith University, the University Hospital, Australia Fair, and Southport CBD. Harbour Town shopping and Northern beaches are just 15-20 minutes away, with easy access to the hinterland and mountains. Ideal for family living.

**Important Note:**  
While every effort has been made to ensure accuracy, LJ Hooker Coomera will not be liable for any errors in typing or information. All details are deemed correct at the time of printing.

## More About this Property

Property ID	42Y3GTJ
Property Type	House
House Size	192 m2
Land Area	512 m2
Including	Air Conditioning Outdoor Entertaining Built-in-Robes

**Robbie Dunn 0404 466 793**  
Sales Specialist | L.R.E.A | [rdunn@ljhgc.com.au](mailto:rdunn@ljhgc.com.au)

**LJ Hooker Coomera (07) 5585 7888**  
The Hub, 5/90 Days Road, UPPER COOMERA QLD 4209  
[coomera.ljhooker.com.au](http://coomera.ljhooker.com.au) | [coomera@ljhgc.com.au](mailto:coomera@ljhgc.com.au)

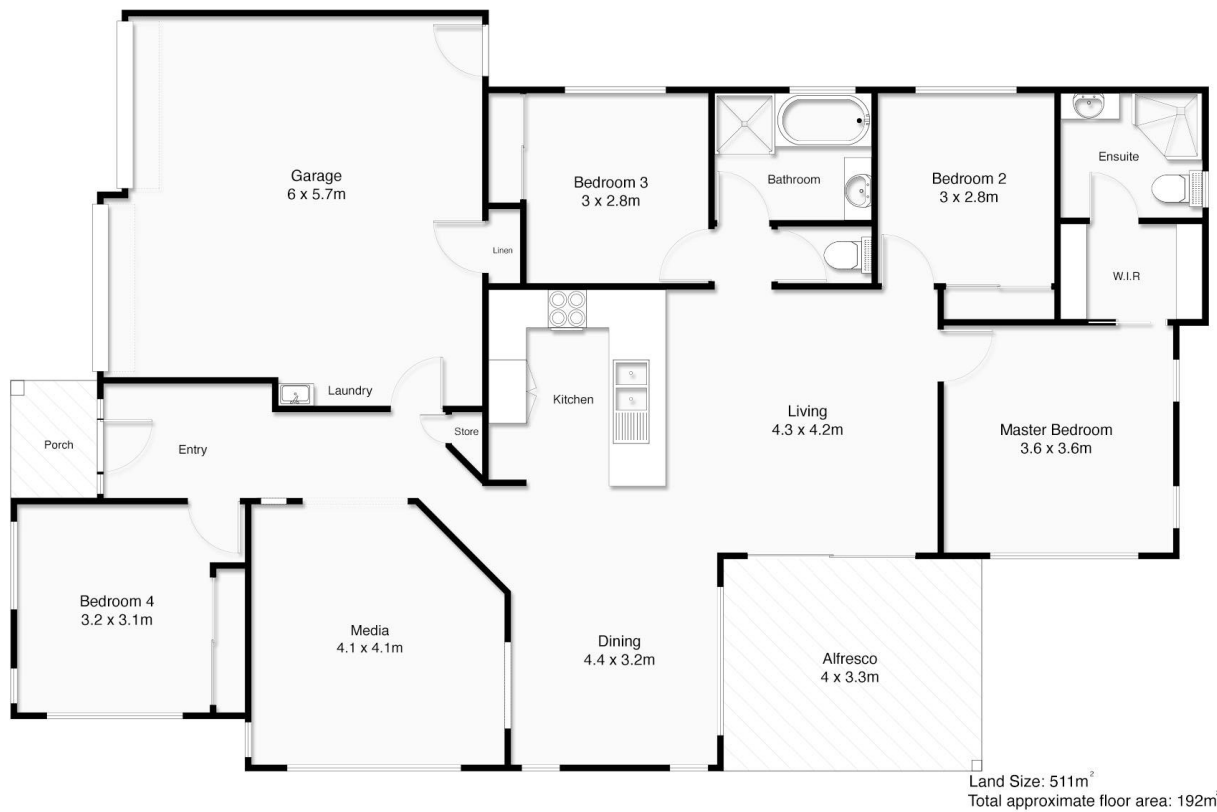


**LJ Hooker**  
Solutions Gold Coast  
17 Gerard Street, Pacific Pines



**Disclaimer:** All information contained therein is gathered from relevant third parties sources. We cannot guarantee or give any warranty about the information provided. Interested parties must rely solely on their own enquiries.

**LJ Hooker Coomera**  
**(07) 5585 7888**



**LJ Hooker**  
Solutions Gold Coast

17 Gerard Street, Pacific Pines

Whilst every attempt has been made to ensure the accuracy of the floor plan contained here, measurements of doors, windows, rooms and any other items are approximate and no responsibility is taken for error, omission or misstatement. This plan is for illustrative purposes only and should only be relied on as such by any prospective purchaser.



**LJ Hooker**

**LJ Hooker Coomera**  
(07) 5585 7888

**Disclaimer:** All information contained therein is gathered from relevant third parties sources.  
We cannot guarantee or give any warranty about the information provided. Interested parties must rely solely on their own enquiries.