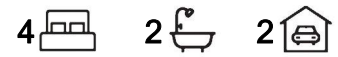




## Pacific Pines, 15 Witheren Circuit

Fantastic Value in Prime Pacific Pines Location



This well laid out 4-bedroom, 2-bathroom home offers exceptional value and convenience, just a short distance to all Pacific Pines amenities. With modern finishings and practical features, it's ready for you to move in and enjoy.

### Property Features:

- \* Brand new carpets and fresh paint throughout
- \* Double front doors for ease of access
- \* Large main living area with cut out feature walls for separation
- \* Family room & dining space flows to the outside entertaining
- \* A large open plan kitchen
- \* Wrap-around benchtops
- \* The hotplate & dishwasher are only 2 years old
- \* Ample bench and storage space
- \* Split system air-conditioning for the main living area

### For Sale

Buyers Above \$930,000

### View

By Appointment

### Contact

**Mark Worthington**

0411 874 168

markworthington@ljhteam.com.au

# LJ Hooker

**Disclaimer:** All information contained therein is gathered from relevant third parties sources.

We cannot guarantee or give any warranty about the information provided. Interested parties must rely solely on their own enquiries.

**LJ Hooker Pacific Pines | Helensvale**  
**(07) 5573 2099**

- \* Master bedroom with ceiling fan, walk-in robe and spacious ensuite
- \* 3 additional spacious bedrooms with built-ins and ceiling fans
- \* 2 bright well-maintained bathrooms
- \* Generous undercover alfresco area, ideal for entertaining
- \* Auto double lock-up garage with internal access
- \* Low-maintenance, landscaped gardens
- \* Usable fenced 630m2 block

Location Highlights:

- \* 6 minutes (re Goggle maps) to Pacific Pines Town Centre
- \* 3 minutes (re Goggle maps) to Coles shopping centre
- \* Walking distance to primary school
- \* Various eateries and cafés are close by
- \* Easy access to the M1 motorway for commuters
- \* Westfield shopping, railway station and light rail are close by at Helensvale

This property is a must-see for families, first-home buyers, and investors alike, offering a great floor plan and location.

Don't miss your chance ensure you attend this week's open for inspections

Disclaimer:

All information contained is gathered from relevant third party sources. We cannot guarantee or give any warranty about the information provided. Interested parties must rely solely on their own enquiries.

## More About this Property

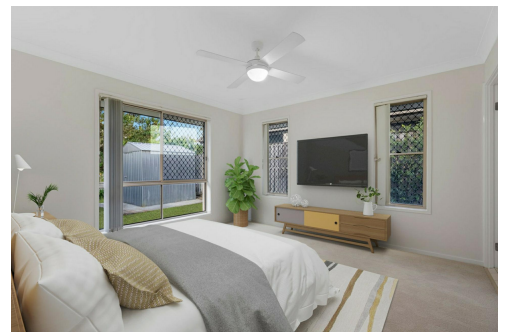
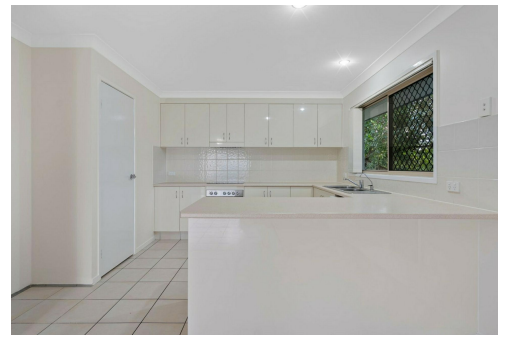
<b>Property ID</b>	35KYGMK
<b>Property Type</b>	House
<b>Land Area</b>	630 m2

**Mark Worthington 0411 874 168**

Sales Consultant | [markworthington@ljhteam.com.au](mailto:markworthington@ljhteam.com.au)

**LJ Hooker Pacific Pines | Helensvale (07) 5573 2099**

8 Discovery Drive, HELENSVALE QLD 4212  
[pacificpines-helensvale.ljhooker.com.au](mailto:pacificpines-helensvale.ljhooker.com.au) | [admin@ljhteam.com.au](mailto:admin@ljhteam.com.au)





(Not In Position)



15 Witheren Circuit PACIFIC PINES

4 | 2 | 2 | 235m<sup>2</sup>



All dimensions are approximate; they are subject to errors and inaccuracies and no liability will be accepted. Plans are shown for marketing purposes only.