



40-42 Weeks Lane, Oxley Island

7 🏠 6 🚗 9 🚘

LUXURIOUS RIVERFRONT RETREAT - MUST BE SOLD

FOR SALE
Guide Price \$2,500,000

AGENTS

Adam Stevenson
0409 607 967
a.stevenson@ljhooker.com.au

AGENCY

LJ Hooker Old Bar Beach
(02) 6553 7133

Imagine a life where every day feels like a getaway, where luxurious living meets the tranquility of nature. Welcome to 40-42 Weeks Lane, a stunning custom built residence set on 67 acres* of farmland, where the beauty of riverfront living is your everyday backdrop.

Step inside to discover a world of elegance, with a double height open void and high vaulted ceilings upon entry, and soaring 2.7m ceilings throughout that create a sense of openness and light. The thoughtfully designed layout includes six spacious bedrooms, each a private sanctuary, with three featuring lavish walk-in robes and private balconies. Imagine waking up to breathtaking river views, sipping your morning coffee while the sun dances on the water.

Indulge in the luxury of space and comfort with multiple living areas, including a state of the art gourmet kitchen fitted with the best of everything! There's also a grand media room, a dedicated office, and a practical mud room. A large laundry and five beautifully appointed bathrooms ensure that every detail has been considered.

This home is not just about aesthetics, it's built for modern living. Enjoy the benefits of an off-grid 3-phase solar system, ensuring both

All information contained therein is gathered from relevant third parties sources. We cannot guarantee or give any warranty about the information provided. Interested parties must rely solely on their own enquiries.

 **LJ Hooker**

sustainability and luxury. With mains electricity, town water, and a discreet septic system, you'll have all the conveniences of modern life without compromising on comfort. The fully contained 1-bedroom granny flat offers an extra layer of versatility (damaged by flood waters and in need of renovation), whether for guests, extended family, or as a rental opportunity.

Venture outdoors and experience your very own private oasis. A boat ramp and pontoon/jetty provide easy access to the river, inviting you to indulge in water activities or serene afternoons by the water with approximately 450m* of deep-water frontage. The expansive deck, facing north-east, is perfect for entertaining or simply soaking in the breathtaking surroundings. You'll find three expansive paddocks, each with water connection for stock, and two serene dams, offering endless possibilities for agriculture or simply enjoying the beauty of the land.

Need storage for the cars and toys? There is a 3 car garage near the house, an additional 4-car colorbond shed (9m x 18m) and a 2 car colorbond shed currently enclosed and used as a cattery. Plus two additional covered outbuildings, perfect for storing your farm equipment.

This is more than just a house, it's a lifestyle - a rare opportunity to own a luxurious retreat where nature and elegance intertwine. Don't miss your chance to experience this breathtaking property. Contact us today to arrange your private inspection and begin your journey to luxurious living at 40-42 Weeks Lane!

Disclaimer: All information contained therein is gathered from relevant third party sources.

We cannot guarantee or give any warranty about the information provided.

Interested parties must rely solely on their own enquiries.

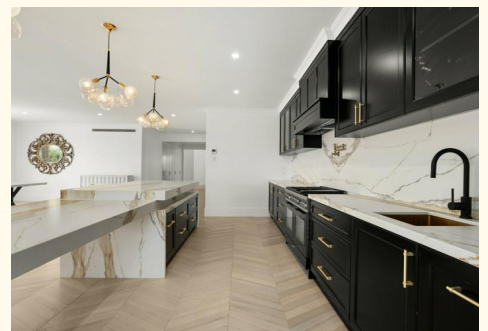
- Approximate areas, distances, times
- Property was impacted by the 2025 floods, the house itself did not flood internally
- Property is now vacant, photos taken when furnished

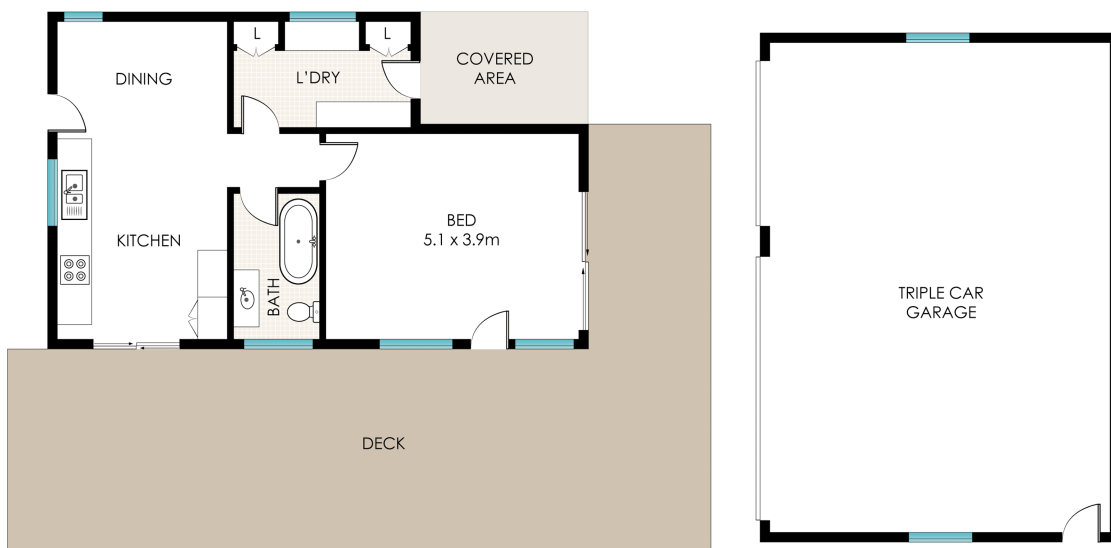
MORE DETAILS

Property ID	NPYF6X
Property Type	AcreageSemi-rural
Land Area	27.12 hectare
Including	Dishwasher Built-in-Robes Council Water Sewer & Rates \$4237 approx per Annum

Adam Stevenson 0409 607 967
Director/Sales Agent/Licensee in Charge |
a.stevenson@ljhooker.com.au

LJ Hooker Old Bar Beach (02) 6553 7133
1/47 Old Bar Road, OLD BAR NSW 2430
oldbarbeach.ljhooker.com.au | oldbarbeach@ljhooker.com.au





40-42 WEEKS LANE, OXLEY ISLAND

Floor Plan measurements are approximate and are for illustrative purposes only.
Floor Plan by James Cause Photography jamescause.com

