



3026/6 Crestridge Crescent, Oxenford

## RENOVATED | HINTERLAND VIEWS | CUSTOM FIRE PLACE | DOUBLE LOCK UP GARAGE

Nestled amongst the treetops and capturing breathtaking Gold Coast hinterland views, this expansive turn-key residence delivers the perfect blend of style, space and serenity.

Bathed in natural light, the home showcases a beautifully designed open-plan living and dining zone, complemented by a stunning fully renovated kitchen. At its heart, a striking stone-clad fireplace creates a warm and inviting focal point, undoubtedly the hero of the home.

### THE OFFER:

- Desirable westerly aspect with sweeping hinterland views and year-round sunsets
- Fully renovated kitchen featuring a generous breakfast bar, ample storage and stainless-steel appliances
- Statement stone-clad electric fireplace
- Light-filled open plan living with updated ceiling fan, reverse-cycle air conditioning, and tranquil outlook
- King-sized master suite with mirrored wardrobes, private balcony, and ensuite

All information contained therein is gathered from relevant third parties sources. We cannot guarantee or give any warranty about the information provided. Interested parties must rely solely on their own enquiries.

3 2 2

### FOR SALE

Buyers Above \$809,000

### AGENTS

Siarne Loeve  
0422 609 353  
siarne@ljhteam.com.au

### AGENCY

LJ Hooker Pacific Pines | Helensvale  
(07) 5573 2099

LJ Hooker

- Two additional queen-sized bedrooms with built-in robes
- Stylish, oversized family bathroom with rain shower and separate bath
- Spacious laundry with added convenience of an upper-level powder room
- Double lock-up garage with internal access
- Floor-to-ceiling sheers and updated blinds throughout
- New flooring to upper level & new carpet to lower level
- Flyscreens throughout
- High ceilings & LED down-lights
- Secure gated complex

#### SPECIAL FEATURES:

- Elevated position at the very top of the complex with uninterrupted views
- Quiet, local traffic-only street-arguably the most peaceful pocket in the estate
- Viewing platform and expansive grassed area adjacent to the home
- Thoughtfully reconfigured floor-plan prioritising functionality
- Custom-designed one of a kind fireplace
- Opportunity to further utilise the outdoor yard space for an additional value add

#### OUTGOINGS:

- Body corporate approx. \$80 p/w (w/ 10% discount applied for on time payment)
- BC Inclusive of building insurance sinking fund and admin fee
- Rental appraisal: \$800 to \$830 p/w
- Rates: approx. \$1,495 (half-yearly)
- Water: approx. \$450 (quarterly)

Positioned within the secure and highly sought-after "Terraces on the Park" gated complex, this home offers convenience and lifestyle in equal measure. Just moments from local schools, Coles, the M1, and only a 5-minute drive to Helensvale Westfield, train, and tram connections.

This is a property that truly needs to be experienced in person. Contact Siarne Loeve today to arrange your inspection.

#### Disclaimer:

All information contained is gathered from relevant third party sources. We cannot guarantee or give any warranty about the information provided. Interested parties must rely solely on their own enquiries.

## MORE DETAILS

Property ID 35ZJGMK  
Property Type Townhouse  
Including Air Conditioning  
Toilets (1)  
Dishwasher  
Floorboards  
Built-in-Robes

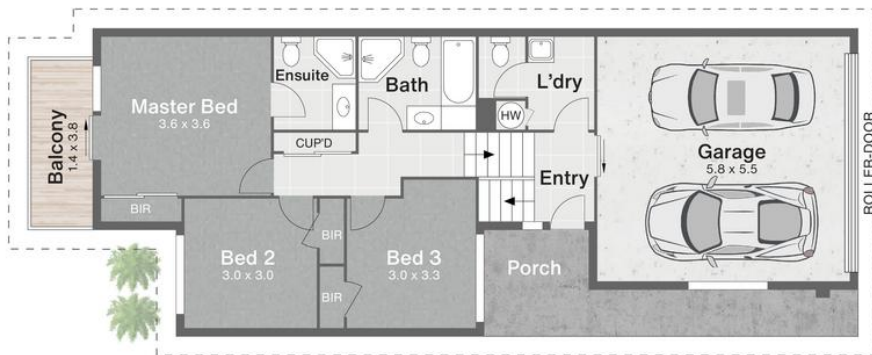
**Siarne Loeve 0422 609 353**  
Sales & Marketing Specialist | [siarne@ljhteam.com.au](mailto:siarne@ljhteam.com.au)

**LJ Hooker Pacific Pines | Helensvale (07) 5573 2099**  
8 Discovery Drive, HELENSVALE QLD 4212  
[pacificpines-helensvale.ljhooker.com.au](http://pacificpines-helensvale.ljhooker.com.au) | [admin@ljhteam.com.au](mailto:admin@ljhteam.com.au)





FIRST FLOOR



GROUND FLOOR



Unit 3026/6 Crestridge Crescent OXFORD

3 | 2 | 2 | 153m<sup>2</sup>



All dimensions are approximate; they are subject to errors and inaccuracies and no liability will be accepted. Plans are shown for marketing purposes only.