


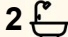



2048/6 Crestridge Crescent, Oxenford

Elevated, Renovated Townhouse in Prime Oxenford Location

Positioned in the highly sought-after suburb of Oxenford, this elevated, multi-level townhouse offers a perfect blend of space, privacy, and lifestyle convenience. Set as an end unit with only one adjoining wall, the home enjoys a and private setting, complemented by a larger lot and a fully fenced courtyard entry. Located within a secure, pet-friendly gated complex with on-site management, this home combines low-maintenance living with excellent investment potential. With convenient access to local amenities, transport, and major arterials, it presents an outstanding opportunity for owner-occupiers and investors alike.

Open plan living and dining area alongside a spacious, well-appointed renovated kitchen with modern appliances, gas cooking, and a generous pantry. The thoughtfully designed layout spans multiple levels, creating separation between living zones while maintaining a practical flow throughout. Accommodation includes three well-sized bedrooms, all with built-in wardrobes, highlighted by a master suite complete with a beautifully renovated ensuite and private balcony access. Both bathrooms have been stylishly updated, offering a fresh, contemporary feel.

3  2  2 

FOR SALE

Offers Over \$830,000

VIEW

By Appointment

AGENTS

Tracey Fisher
0401 882 881
tfisher@ljhgc.com.au

Tim Wolff
0419 620 470
twolff@ljhgc.com.au

AGENCY

LJ Hooker Nerang
(07) 5581 4422

All information contained therein is gathered from relevant third parties sources.
We cannot guarantee or give any warranty about the information provided.
Interested parties must rely solely on their own enquiries.



Master bedroom with air conditioner, ensuite and private balcony
 Two further bedrooms, all with built-in wardrobes
 Spacious kitchen with large pantry, gas cooktop, and dishwasher
 Open plan living and dining area
 Welcoming entry foyer with stained glass panel inserts
 Staircases connecting upper and lower levels
 Internal access from remote double lock-up garage
 Separate laundry
 Additional (third) toilet
 Recently fully renovated ensuite
 Main bathroom, also recently renovated and styled to match the ensuite
 Electric hot water system
 Double lock-up garage with additional parking space in front
 Elevated, multi-level townhouse with stunning hinterland views
 End unit position with only one wall for added privacy
 Larger lot size with a private, fenced courtyard entry
 Located in a secure gated complex

- friendly community with on-site management

Built 1996
 Currently owner-occupied
 Body Corporate fees: approximately \$88 per week
 Rental appraisal: \$750—\$800 per week

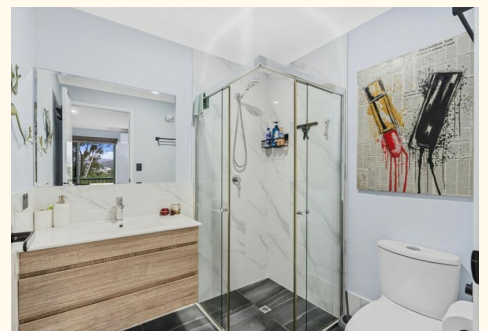
Located in the desirable suburb of Oxenford, this home is surrounded by excellent amenities including schools, shopping centres, public transport, parks, and family-friendly attractions. Major theme parks and recreational facilities are all within easy reach, making this an ideal opportunity for families, investors, or those seeking lifestyle convenience.

MORE DETAILS

Property ID	5HVAF41
Property Type	Townhouse
Including	Built-in-Robes

Tracey Fisher 0401 882 881
 Sales Specialist | tfisher@ljhgc.com.au
Tim Wolff 0419 620 470
 Sales Specialist | twolff@ljhgc.com.au

LJ Hooker Nerang (07) 5581 4422
 2-4 New Street, NERANG QLD 4211
nerang.ljhooker.com.au | nerang@ljhgc.com.au





2048/6 CRESTRIDGE CRESCENT, OXFORD

 3  2  2

Internal: 148m² | External: 3m² | Total: 151m²

Whilst every attempt has been made to ensure the accuracy of the floor plan contained here, measurements of doors, windows, rooms and any other item are approximate and no responsibility is taken for any error, omission, or misstatement. This plan is for illustrative purposes only and should only be used as such by any prospective purchaser.

