



Oxenford, 2018/6 Crestridge Crescent

Elevated Luxury Living With Stunning Hinterland Views

Perched high amongst the treetops and capturing breathtaking vistas of the Gold Coast hinterland, this expansive and impeccably presented residence delivers the perfect blend of privacy, style, and functionality.

Ideal for families or discerning buyers seeking space and comfort, this beautifully renovated home showcases sunlit open-plan living, an updated kitchen, and luxuriously finished bathrooms.

Property Highlights:

Light-filled Living & Dining: Spacious and airy open-plan design with timber look flooring, reverse-cycle air conditioning, ceiling fan, and wide windows that flood the space with natural light while offering tranquil leafy views.



For Sale
Just Listed

View
By Appointment

Contact
Adam Hope
0417 654 153
adam.hope@ljhteam.com.au

Kylie Taggart
0413 104 444
kylie.taggart@ljhteam.com.au

LJ Hooker

Disclaimer: All information contained therein is gathered from relevant third parties sources. We cannot guarantee or give any warranty about the information provided. Interested parties must rely solely on their own enquiries.

LJ Hooker Pacific Pines | Helensvale
(07) 5573 2099

Modern Kitchen: Recently renovated, the kitchen is the heart of the home, featuring an ample cabinetry, quality stainless steel appliances, and stylish finishes throughout.

Luxurious Master Retreat: King-sized master bedroom complete with mirrored built-in wardrobes, air conditioning, and private balcony - a serene space to unwind with elevated outlooks.

Designer Ensuite: Brand-new, fully renovated ensuite featuring high-end finishes, floor to ceiling tiling, and a sleek contemporary design.

Spacious Additional Bedrooms: Two further generously sized bedrooms, each with built-in robes, ideal for family members or guests.

Modern Family Bathroom: Recently renovated main bathroom with elegant floor to ceiling tiles, frameless glass shower, and a separate bathtub for added luxury.

Convenient Powder Room & Laundry: Stylish and functional internal laundry, plus the bonus of an upstairs powder room for added convenience.

Secure Double Garage: Double lift-up garage with remote controlled electric roller door, internal access, and extra storage space

Location & Lifestyle:

Positioned within the secure, sought-after Terraces on the Park gated complex, this exceptional property offers peaceful community living with excellent access to local amenities. Just minutes from top schools, Coles supermarket, and the M1 motorway, and only a short 5 minute drive to Helensvale Westfield Shopping Centre, as well as the train and tram stations, making commuting or weekend getaways a breeze.

Disclaimer:

All information contained is gathered from relevant third party sources. We cannot guarantee or give any warranty about the information provided. Interested parties must rely solely on their own enquiries.

More About this Property

Property ID	35JTGMK
Property Type	Townhouse
Including	Ensuite

Adam Hope 0417 654 153

Owner | Principal | Sales Director | adam.hope@ljhteam.com.au

Kylie Taggart 0413 104 444

Sales Specialist | kylie.taggart@ljhteam.com.au

LJ Hooker Pacific Pines | Helensvale (07) 5573 2099

8 Discovery Drive, HELENSVALE QLD 4212

pacificpines-helensvale.ljhooker.com.au | admin@ljhteam.com.au

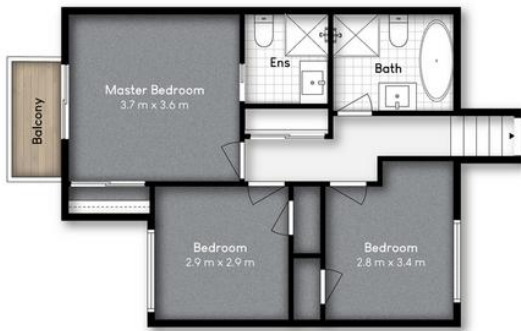


Disclaimer: All information contained therein is gathered from relevant third parties sources. We cannot guarantee or give any warranty about the information provided. Interested parties must rely solely on their own enquiries.

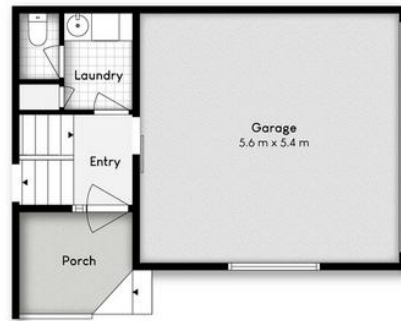
**LJ Hooker Pacific Pines | Helensvale
(07) 5573 2099**



Upper Level



Lower Level



Middle Level

2018/6 CRESTRIDGE CRESCENT, OXENFORD

3 2 2

Internal: 152m² | External: 9m² | Total: 161m²

Whilst every attempt has been made to ensure the accuracy of the floor plan contained here, measurements of doors, windows, rooms and any other item are approximate and no responsibility is taken for any error, omission, or misstatement. This plan is for illustrative purposes only and should only be used as such by any prospective purchaser.

