



## Oxenford, 10 Winslow Court

### PERFECT FAMILY SETTING WITH BUSHLAND BACKDROP

RACHEL RYAN, LACHLAN SMITH & LJ HOOKER ARE EXCITED TO PRESENT 10 WINSLOW COURT, OXFENFORD TO THE MARKET!

Nestled in a quiet cul-de-sac street and backing directly onto peaceful bushland backdrop, this beautifully presented single-level home offers space, comfort, and an unbeatable lifestyle. Whether you're a young family, first-home buyer, or downsizer, this is a rare chance to secure a private retreat with everything done-just turn the key and settle in.

Inside, light-filled, open-plan living zones flow effortlessly including a spacious lounge, family room, and separate dining area, all kept comfortable year-round by split-system air conditioning. The central kitchen features stainless steel appliances, ample bench space, generous storage, and its own new air conditioner-making entertaining easy.

3

2

2

**For Sale**  
CONTACT AGENT

**View**  
Sat 5th Jul @ 9:45AM - 10:15AM

**Contact**  
**Rachel Ryan**  
0433 774 501  
rryan@ljhgc.com.au  
**Ineke Jackson**  
0437 397 795  
ijackson@ljhgc.com.au



**Disclaimer:** All information contained therein is gathered from relevant third parties sources. We cannot guarantee or give any warranty about the information provided. Interested parties must rely solely on their own enquiries.

**LJ Hooker Tamborine Mountain**  
**(07) 5545 1500**

Three bedrooms come with built-in robes, ceiling fans, and new flooring. The generous master bedroom has a private ensuite for extra comfort, while the large family bathroom offers a separate bath and shower.

Slide open the doors and step into an expansive, covered alfresco area, perfect for entertaining or relaxing beside the fire pit while enjoying the peaceful bush backdrop. This fully fenced, low-maintenance yard, is ideal for kids or pets. A double lock-up garage with laundry facilities plus a solar system adds practicality and energy savings.

#### FEATURES INCLUDE:

- 802m2
- Quiet cul-de-sac with bushland outlook
- Multiple living areas for family flexibility & split-systems A/C
- Modern kitchen with stainless appliances
- 3 bedrooms with built-ins & ceiling fans
- Master bedroom with ensuite
- Family bathroom with bath & separate shower
- Huge covered outdoor entertaining space + fire pit
- Fully fenced, low maintenance
- Double lock-up garage with integrated laundry
- Solar power system
- New roof insulation
- Close to shops, dining, sporting, and theme parks

Close to schools, shops, theme parks, and public transport-this is a home that truly ticks every box in a sought-after pocket of Oxenford. Don't miss your chance.

## More About this Property

<b>Property ID</b>	P2HZF
<b>Property Type</b>	House
<b>House Size</b>	125 m2
<b>Land Area</b>	802 m2
<b>Including</b>	Ensuite Air Conditioning Built-in-Robes

#### Rachel Ryan 0433 774 501

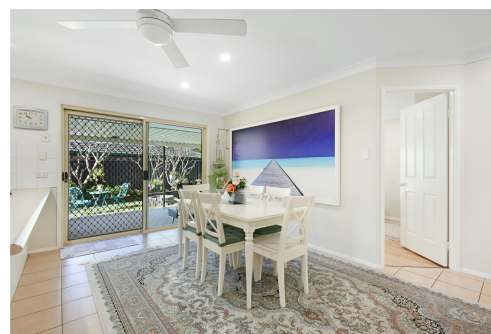
Sales Specialist | L.R.E.A | Independent Contractor | rryan@ljhgc.com.au

#### Ineke Jackson 0437 397 795

| ijackson@ljhgc.com.au

#### LJ Hooker Tamborine Mountain (07) 5545 1500

Shop 1D/17-27 Main Western Road, TAMBORINE MOUNTAIN QLD 4272  
tamborinemountain.ljhooker.com.au | tamborinemountain@ljhgc.com.au



**Disclaimer:** All information contained therein is gathered from relevant third parties sources. We cannot guarantee or give any warranty about the information provided. Interested parties must rely solely on their own enquiries.

**LJ Hooker Tamborine Mountain**  
**(07) 5545 1500**