
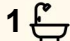
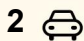




27 Linneus Street, Owanilla

1  1  2 

Exceptional Acreage with Premium American Barn & Lifestyle Infrastructure

27 Linneus Street, Owanilla QLD 4655

Set on a fully fenced 1 acre (4,000m²;) allotment, across the road from the pristine Mary River, this meticulously developed property delivers an outstanding blend of functionality, lifestyle and future potential. Purpose built with quality, drainage, and flood safety in mind, it is ideal for tradies, car enthusiasts, hobbyists, or buyers seeking a flexible rural-residential base just minutes from Maryborough.

Property Highlights

- Fully fenced 1 acre block
- Remote controlled front entry gate
- Heavy duty 300mm StormPro drainage pipes throughout
- Shed constructed above flood zone
- CCTV security system
- Starlink internet connectivity
- On-site weather station

Custom American-Style Barn Shed (Deep Ocean)

FOR SALE

Please Call

AGENTS

Brad Franks

0403 887 603

brad.franks@ljhooker.com.au

AGENCY

LJ Hooker Fraser Coast

07 4191 3500

All information contained therein is gathered from relevant third parties sources. We cannot guarantee or give any warranty about the information provided. Interested parties must rely solely on their own enquiries.

 **LJ Hooker**

A standout feature of the property, this custom-built American barn is finished in striking Deep Ocean colour with under-roof insulation and a highly versatile internal layout.

Internal size: 14m x 10m

Left Wing – Garage (5m x 10m)

- Fully lined walls
- 2m high garage door
- 15amp & 10amp double GPOs
- Spare 2.5mm power supply from front to rear

Centre Section – Workshop (4m x 10m)

Front Area (4m x 5m):

- 2m high garage door
- 10amp double GPOs
- Mezzanine storage at 2.4m
- Ceiling fan

Rear Area (4m x 5m):

- Rear wall lined and insulated to 2.4m
- Extra-depth concrete (150mm) engineered for 4-post hoist installation
- Ceiling fan

Right Wing – Living / Studio Space (5m x 10m)

Rear Room (5m x 3m):

- Shower, toilet, bathroom vanity
- Laundry sink
- Walls lined and insulated to 2.4m

Front Room (5m x 7m):

- Lined and insulated to 2.4m
- 1.8m bi-fold door
- Kitchenette
- 5kW Wi-Fi enabled inverter split system (recently serviced)
- Ceiling fan

Outdoor & Utility Features

- Covered external area 13m x 3m
- 9m x 4m fenced section
- Cold-room panel insulation under roof
- 4 dimmable downlights
- 2.4m outdoor-rated ceiling fan
- Outdoor GPO

Services & Infrastructure

- 22,700L (5,000 gal) water tank in matching Deep Ocean
- Pressure pump
- Approx. 180L hot water system
- OzziKleen aerobic sewage treatment plant (commissioned October 2025)

The Opportunity

Whether you're seeking a high-end workshop, a lifestyle shed solution while you build your dream home, or a versatile acreage base with exceptional infrastructure already in place, 27 Linneus Street offers a rare level of detail, quality and forward-thinking design.

MORE DETAILS

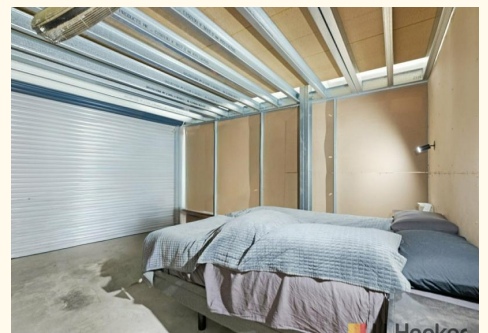
Property ID B8KHXD
Property Type House
Land Area 4047 m2

Brad Franks 0403 887 603

Sales Consultant | brad.franks@ljhooker.com.au

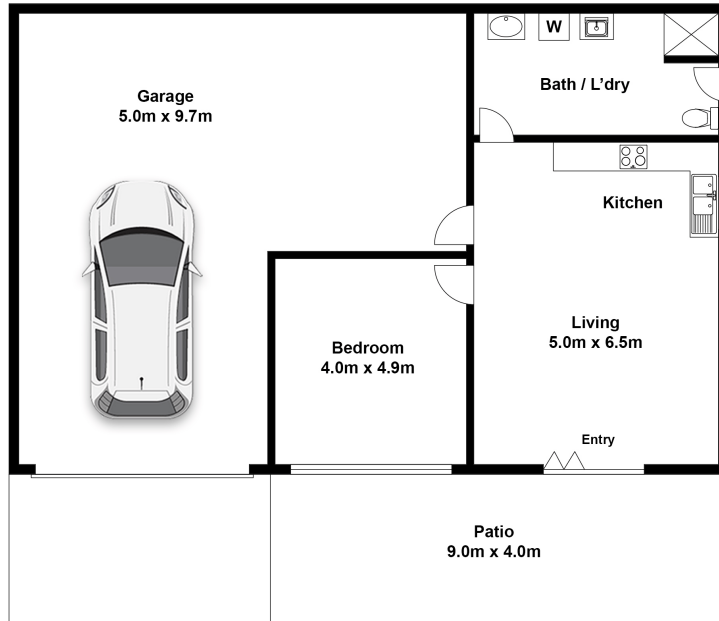
LJ Hooker Fraser Coast 07 4191 3500

331 Esplanade, SCARNESS QLD 4655
frasercoast.ljhooker.com.au | frasercoast@ljhooker.com.au



All information contained therein is gathered from relevant third parties sources.
We cannot guarantee or give any warranty about the information provided.
Interested parties must rely solely on their own enquiries.

1  | 1  | 1 



Whilst every attempt has been made to ensure the accuracy of the floor plan contained here, measurements of doors, windows, rooms and any other items are approximate and no responsibility is taken for error, omission or mis-statement. This plan is for illustrative purposes only and should only be used as such by any prospective purchaser. The service systems and appliances shown have not been tested and no guarantee as to their operability or efficiency can be given.