



5 Lara Close, Ourimbah

Resort Like Sanctuary, Beautifully Renovated Family Home!

An idyllic resort-like sanctuary for growing families, this beautifully renovated home creates a relaxed indoor/outdoor lifestyle or wonderful privacy & practicality. Close to quality schools, Uni, parklands, all transport & M1 freeway.

- Flowing single level layout creating spacious living & dining areas
- Seamless connection to covered entertaining, lawn & pool areas
- Renovated kitchen featuring four burner gas cooktop & wall oven
- Bedrooms designed for relaxation, built in robes to all
- Private primary bedroom with new built ins & updated ensuite
- Bathroom with brand new vanity, refreshed interior & separate WC
- Split system air conditioning, neatly appointed & renovated laundry
- Sparkling in ground pool having been landscaped with marble tiling
- Automatic double car garage, very neat & tidy, established gardens
- Garden shed, level yard & water tank, relatively low maintenance
- Only short drive to major retailer Westfield shopping centre
- Close to Ourimbah village shops, railway station & bus stop
- Close to quality local schools, University, parks, CBD & M1

4 🚗 2 🛏 2 🚗

FOR SALE
Contact Agent

AGENTS

Mark Whybrow
0412 994 707
mwhybrow.lisarow@ljhooker.com.au

AGENCY

LJ Hooker East Gosford
(02) 4322 5522

All information contained therein is gathered from relevant third parties sources.
We cannot guarantee or give any warranty about the information provided.
Interested parties must rely solely on their own enquiries.

 **LJ Hooker**

freeway

Council Rates: \$1,746.88pa approx.
Water Rates: \$1,185.08pa approx. + usage

MORE DETAILS

Property ID	871GQR
Property Type	House
Land Area	578 m2
Including	Close to Schools Close to Shops Close to Transport

Mark Whybrow 0412 994 707

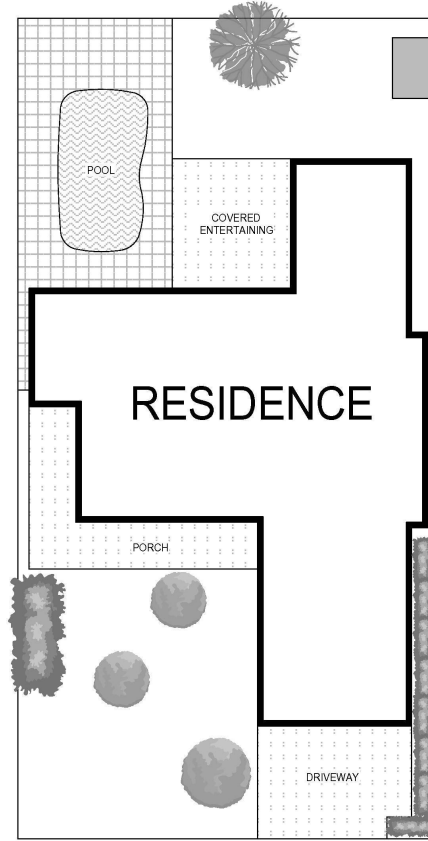
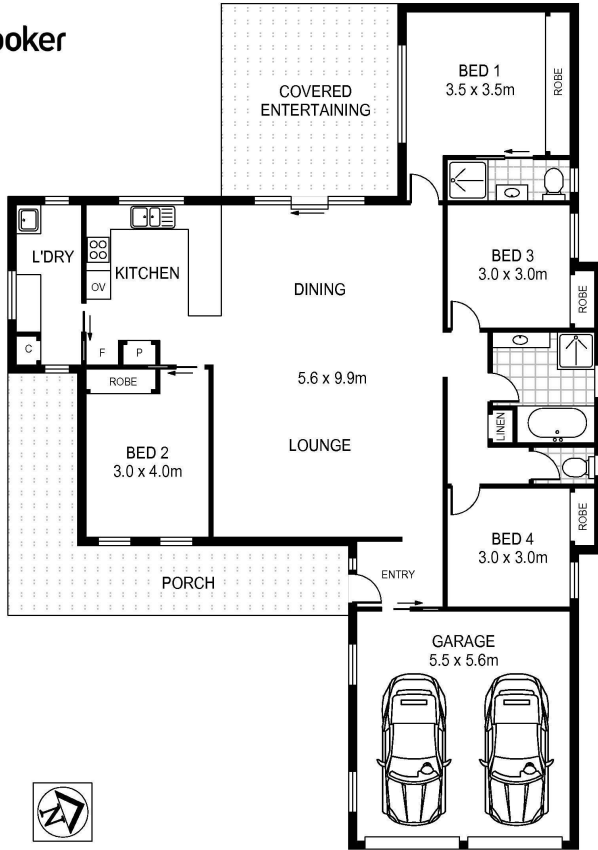
Licensed Real Estate Agent | Director Whybrow Real Estate Pty Ltd |
mwhybrow.lisarow@ljhooker.com.au

LJ Hooker East Gosford (02) 4322 5522

Suite 5 & 6 Victoria Court, 36-40 Victoria Street, EAST GOSFORD
NSW 2250
eastgosford.ljhooker.com.au | eastgosford@ljhooker.com.au



All information contained therein is gathered from relevant third parties sources.
We cannot guarantee or give any warranty about the information provided.
Interested parties must rely solely on their own enquiries.



Scale in metres, Indicative only. Dimensions are approximate. All information contained herein is gathered from sources we believe to be reliable. However we cannot guarantee its accuracy and interested persons should rely on their own enquiries

INT : 142m²
GARAGE : 31m²

5 Lara Close, Ourimbah