

## Ormeau, 80 Halfway Drive

**Rare 950m<sup>2</sup> Block, Solar, Multiple Living Zones & Huge Backyard Retreat!**

Set on a massive 950m<sup>2</sup> block in a family-friendly location, this beautifully maintained home delivers the ultimate blend of space, functionality, and lifestyle. Whether you're upsizing, nesting, or investing-this is a rare opportunity you don't want to miss.

Inside, the home boasts a spacious and flowing layout with four generous bedrooms, multiple living areas, and a light-filled day room that seamlessly opens to the backyard. The central kitchen features ample bench space, a walk-in pantry, and an open-plan design that overlooks the large dining and family zones.

Step outside to your own private haven-lush gardens, a fully fenced yard, and a freestanding gazebo-style alfresco area perfect for entertaining or relaxing.

With a long list of extras including solar panels, ducted air, a double lock-up garage with

4 2 2

**For Sale**  
Offers Over \$1,100,000

**View**  
By Appointment

**Contact**  
**Nicole Hintz**  
0403 895 705  
nhintz@ljhg.com.au

**Liza Neuss**  
0447 006 098  
liza@ljhg.com.au

# LJ Hooker

**LJ Hooker Ormeau**  
**(07) 5549 4500**

**Disclaimer:** All information contained therein is gathered from relevant third parties sources. We cannot guarantee or give any warranty about the information provided. Interested parties must rely solely on their own enquiries.



rear roller-door, and a quiet street just minutes to Norfolk Village State School-this one truly ticks all the boxes.

#### Key Features:

- 4 spacious bedrooms with built-in robes
- Master with ensuite and walk-in robe
- Multiple living areas including family room & day room
- Central kitchen with breakfast bar
- Enclosed outdoor entertaining area
- Double lock-up garage
- Garden shed for extra storage
- Fully fenced backyard with room to play
- Ducted Air conditioning and ceiling fans throughout
- 183m<sup>2</sup> internal space on a family-friendly block
- Walk to Norfolk Village State School

Homes with this much space and outdoor appeal rarely hit the market-especially in this tightly held pocket of Ormeau. Move in, spread out, and enjoy!

## More About this Property

Property ID	1YB9GWH
Property Type	House
House Size	183 m2
Land Area	950 m2
Including	Ducted Cooling Ducted Heating Outdoor Entertaining Built-in-Robes Remote Garage Solar Panels Water Tank Solar Hot Water

#### Nicole Hintz 0403 895 705

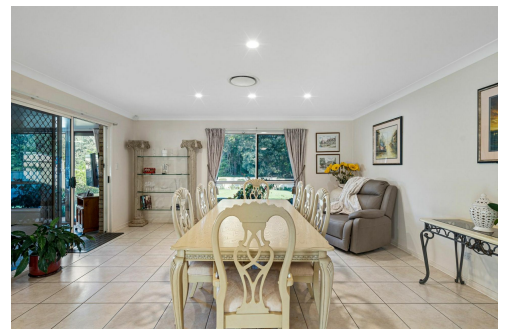
Director | L.R.E.A | Independent Contractor | [nhintz@ljhgc.com.au](mailto:nhintz@ljhgc.com.au)

#### Liza Neuss 0447 006 098

Sales Associate to Nicole Hintz Independent Contractor | [liza@ljhgc.com.au](mailto:liza@ljhgc.com.au)

#### LJ Hooker Ormeau (07) 5549 4500

Unit 10 Norfolk Village Shopping Ctr, 170-174 Pascoe Road, ORMEAU QLD 4208  
[ormeau.ljhooker.com.au](http://ormeau.ljhooker.com.au) | [ormeau@ljhgc.com.au](mailto:ormeau@ljhgc.com.au)



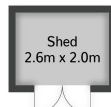
# LJ Hooker

**Disclaimer:** All information contained therein is gathered from relevant third parties sources. We cannot guarantee or give any warranty about the information provided. Interested parties must rely solely on their own enquiries.

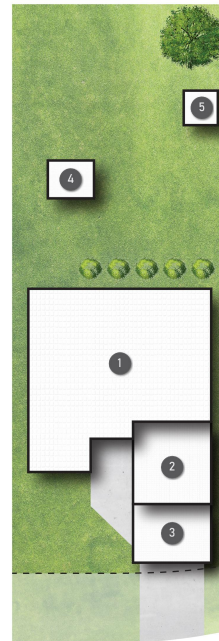
**LJ Hooker Ormeau**  
**(07) 5549 4500**



[Not In Position]



[Not In Position]



## LEGEND

- 1 RESIDENCE
- 2 GARAGE
- 3 CARPORT
- 4 OUTDOOR
- 5 SHED



80 Halfway Drive **ORMEAU**

4 | 2 | 2 | 183m<sup>2</sup>



All dimensions are approximate; they are subject to errors and inaccuracies and no liability will be accepted. Plans are shown for marketing purposes only.

# LJ Hooker

**LJ Hooker Ormeau**  
**(07) 5549 4500**

**Disclaimer:** All information contained therein is gathered from relevant third parties sources. We cannot guarantee or give any warranty about the information provided. Interested parties must rely solely on their own enquiries.