



## Ormeau, 8 Maidenwell Road

Exceptional Family Living in a Prime Ormeau Pocket



Nestled in one of Ormeau's most sought-after enclaves and surrounded by parklands and premium amenities, this exceptional family residence offers a lifestyle of space, comfort, and effortless entertaining. Showcasing modern interiors and quality finishes throughout, this is a home designed to grow with you and your family.

Thoughtfully planned and generously scaled across a single sprawling level, the home caters beautifully to large or evolving families. Multiple living zones ensure everyone has their space, including a light-filled open-plan family and dining area, a private lounge for quiet relaxation, a separate children's retreat, and a massive rumpus room that opens directly to the alfresco zone-ideal for entertaining or family gatherings.

At the heart of the home, the stunning kitchen boasts a sleek, modern design with an abundance of storage, gourmet appliances, striking black hardware, and premium tapware. A vast stone island with breakfast bar seating provides the perfect hub for family

**For Sale**  
CONTACT AGENT

**View**  
By Appointment

**Contact**  
**Nicole Hintz**  
0403 895 705  
nhintz@ljhgc.com.au

**Shelley Green**  
0477 790 660  
sgreen@ljhgc.com.au

# LJ Hooker

**LJ Hooker Ormeau**  
**(07) 5549 4500**

**Disclaimer:** All information contained therein is gathered from relevant third parties sources. We cannot guarantee or give any warranty about the information provided. Interested parties must rely solely on their own enquiries.

connection.

Indoor-outdoor living takes centre stage with an expansive covered patio offering superb all-weather comfort. Fitted with plantation shutters, ceiling fans, and a built-in BBQ with stone benchtops, it's the ultimate entertainer's retreat. The fully fenced yard is ideal for kids and pets, while the large in-ground pool with decked surrounds promises endless summer fun.

Accommodation is equally impressive, with four built-in bedrooms thoughtfully positioned for privacy. The master retreat is tucked away from the others and features a walk-in robe and stylish ensuite with dual vanity. A modern family bathroom with separate bath and shower services the remaining bedrooms with ease.

-700m2 block

-Sprawling single level in contemporary style

-Brilliant supply of living and dining including separate lounge, children's tv room, open-plan living and dining and huge rumpus

-Modern kitchen with refined joinery, black accents, stainless appliances and expansive stone

-Massive covered entertainer's patio with all-weather protection and built-in BBQ kitchen

-In-ground swimming pool with decked entertaining plus fenced yard

-Four built-in bedrooms; master including walk-in robe and stylish ensuite with dual vanity

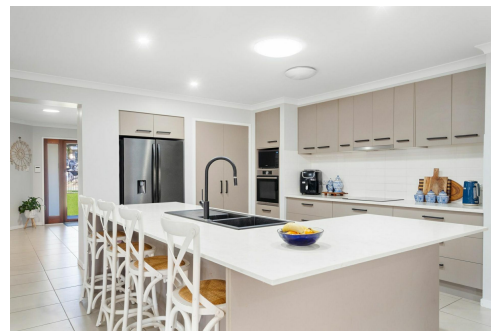
-Contemporary family bathroom with separate bath and shower

-Laundry with cabinetry/water tank/solar electricity/rear sheds/reverse cycle air-conditioning

-Security screens

-Double garage with shaded driveway

-Close to amenities, schooling and parkland



## More About this Property

<b>Property ID</b>	1YD5GWH
<b>Property Type</b>	House
<b>Land Area</b>	700 m2
<b>Including</b>	Air Conditioning Pool Dishwasher Outdoor Entertaining Built-in-Robes Fully Fenced Remote Garage

**Nicole Hintz 0403 895 705**

Director | L.R.E.A | Independent Contractor | [nhintz@ljhgc.com.au](mailto:nhintz@ljhgc.com.au)

**Shelley Green 0477 790 660**

Sales Specialist | [sgreen@ljhgc.com.au](mailto:sgreen@ljhgc.com.au)

**LJ Hooker Ormeau (07) 5549 4500**

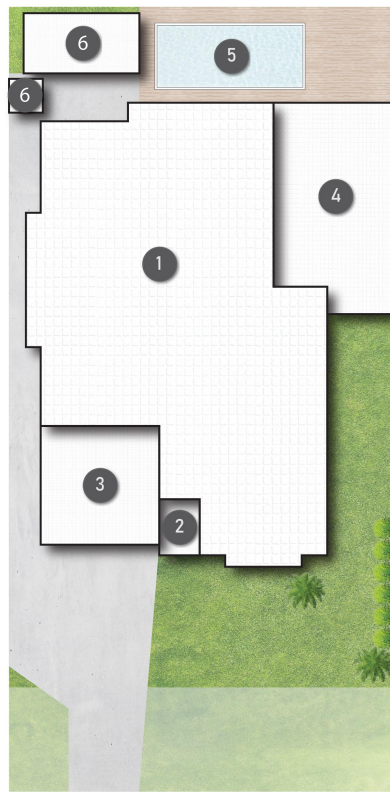
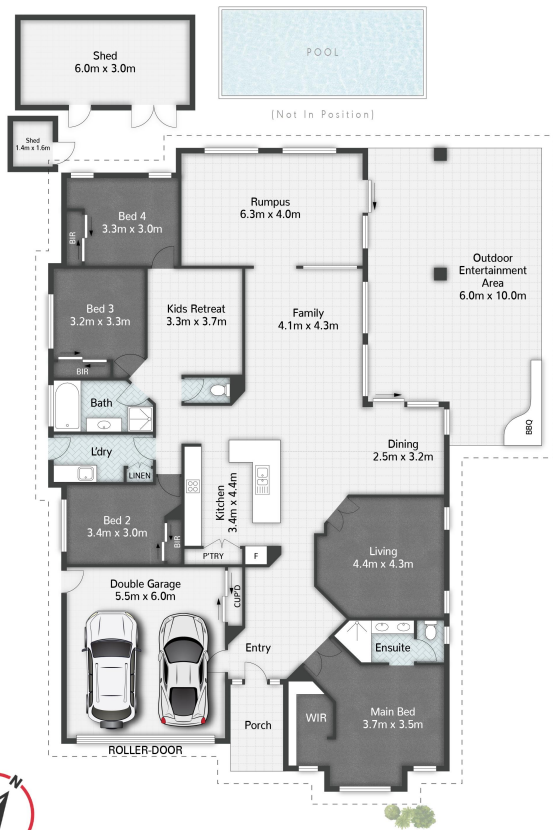
Unit 10 Norfolk Village Shopping Ctr, 170-174 Pascoe Road, ORMEAU QLD 4208  
[ormeau.ljhooker.com.au](http://ormeau.ljhooker.com.au) | [ormeau@ljhgc.com.au](mailto:ormeau@ljhgc.com.au)

# LJ Hooker

**Disclaimer:** All information contained therein is gathered from relevant third parties sources.

We cannot guarantee or give any warranty about the information provided. Interested parties must rely solely on their own enquiries.

**LJ Hooker Ormeau  
(07) 5549 4500**



8 Maidenwell Road ORMEAU

4 | 2 | 2 | 320m<sup>2</sup>



All dimensions are approximate; they are subject to errors and inaccuracies and no liability will be accepted. Plans are shown for marketing purposes only.

**LJ Hooker**

**LJ Hooker Ormeau  
(07) 5549 4500**

**Disclaimer:** All information contained therein is gathered from relevant third parties sources. We cannot guarantee or give any warranty about the information provided. Interested parties must rely solely on their own enquiries.