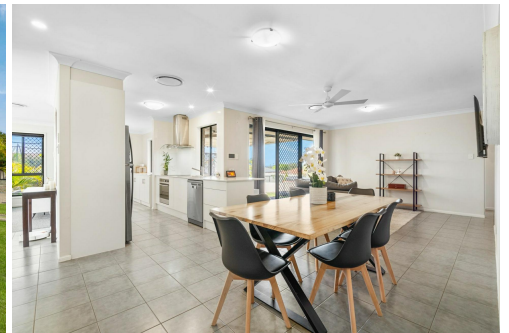




Boundaries and dimensions are approximate only.
Interested parties should conduct their own independent enquiries.



Ormeau, 68 Doolan Street

PRISTINE MODERN INTERIOR ON LARGE CORNER BLOCK

Immaculately presented and boasting fantastic family sizing, this pristine single-level enjoys the advantages of a versatile corner block position and plenty of space! Sitting a short walk from sought-after schooling and close to additional amenities, it is the ideal setting for a quintessential family lifestyle.

Fenced frontage and lush landscaping provide perfect street appeal with an inviting aesthetic continuing throughout the single-level layout. Amplifying the fabulous natural light with a neutral palette, families can unwind and connect at their desire with the choice of a plush carpeted lounge and open-plan living and dining; ducted air-conditioning flowing throughout. There is no shortage of storage in the sleek modern kitchen, with streamlined joinery continuing into a massive walk-in pantry, whilst expansive stone and stainless appliances handle any catering requirement.



For Sale
Offers Over \$900,000

View
ljhooker.com.au/1Y5FGWH

Contact
Nicole Hintz
0403 895 705
nhintz@ljhg.com.au

Liza Neuss
0447 006 098
liza@ljhg.com.au

LJ Hooker

Disclaimer: All information contained therein is gathered from relevant third parties sources. We cannot guarantee or give any warranty about the information provided. Interested parties must rely solely on their own enquiries.

LJ Hooker Ormeau
(07) 5549 4500

Step outside to your covered deck and enjoy an elevated view across the leafy landscape as well as cooling breezes. A fire pit zone provides winter fun whilst the huge fenced yard offers endless space for children to play or to install a swimming pool, if desired.

Each of the four bedrooms have built-in storage, carpet and ceiling fans. Along with a walk-in robe, the master boasts a sleek contemporary ensuite with mirrored storage and dual vanity whilst the family bathroom matches in a timeless white design and includes a separate bath. Additional features include a separate laundry with storage, solar electricity, garden shed and double remote garage. There is gated side access with the corner block also allowing extensive scope for those needing to accommodate large boats or caravans.

A short walk to Norfolk Village State School, bus and parkland, there is also enviable accessibility to shops, dining, additional schooling and major transport corridors ensuring that this market offering will be popular amongst a wide buyer pool!

- 700m2
- Immaculate single-level on large and versatile corner block
- Pristine interior including open-plan living and dining plus separate lounge
- Gleaming modern kitchen with huge walk-in pantry, quality appliances and sleek stone
- Covered alfresco deck plus fire pit zone
- Huge fenced backyard with plenty of room for a swimming pool
- Four built-in bedrooms with ceiling fans; master including walk-in robe and contemporary ensuite with dual vanity and mirrored storage
- Contemporary family bathroom with separate bath
- Spacious laundry with built-in storage
- Garden shed
- Solar electricity
- Double remote garage plus gated side access
- Walk to bus, parkland and Norfolk Village State School

More About this Property

Property ID	1Y5FGWH
Property Type	House
House Size	185 m ²
Land Area	700 m ²
Including	Air Conditioning Ducted Cooling Ducted Heating Dishwasher Outdoor Entertaining Built-in-Robes Remote Garage Solar Panels

Nicole Hintz 0403 895 705

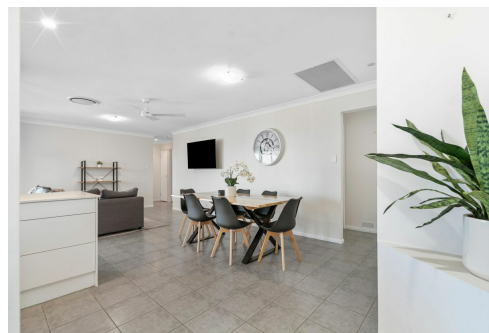
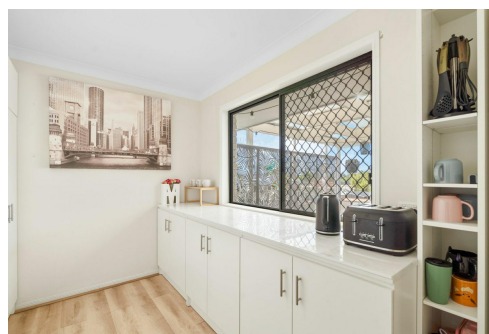
Director | L.R.E.A | Independent Contractor | nhintz@ljhgc.com.au

Liza Neuss 0447 006 098

Sales Associate to Nicole Hintz Independent Contractor | liza@ljhgc.com.au

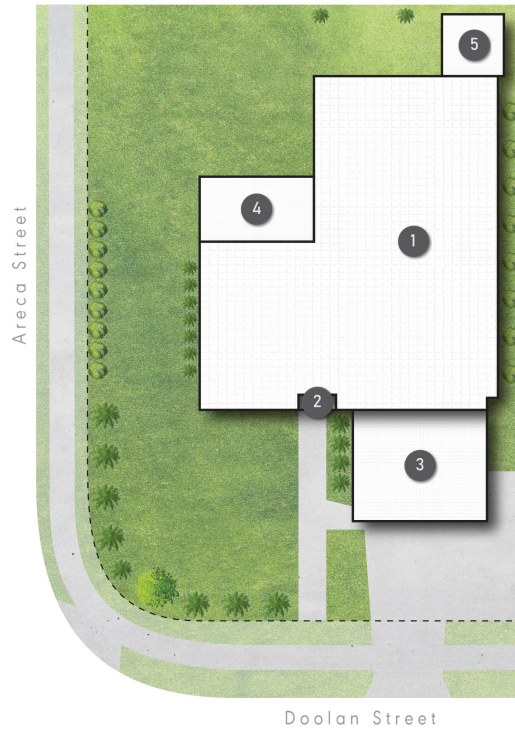
LJ Hooker Ormeau (07) 5549 4500

Unit 10 Norfolk Village Shopping Ctr, 170-174 Pascoe Road, ORMEAU QLD 4208
ormeau.ljhooker.com.au | ormeau@ljhgc.com.au



Disclaimer: All information contained therein is gathered from relevant third parties sources. We cannot guarantee or give any warranty about the information provided. Interested parties must rely solely on their own enquiries.

LJ Hooker Ormeau
(07) 5549 4500



LEGEND

- 1 RESIDENCE
- 2 PORCH
- 3 GARAGE
- 4 PATIO
- 5 SHED



68 Doolan Street **ORMEAU**

 4 |
  2 |
  2 |
  185m²

LJ Hooker

All dimensions are approximate; they are subject to errors and inaccuracies and no liability will be accepted. Plans are shown for marketing purposes only.

LJ Hooker

LJ Hooker Ormeau
(07) 5549 4500

Disclaimer: All information contained therein is gathered from relevant third parties sources. We cannot guarantee or give any warranty about the information provided. Interested parties must rely solely on their own enquiries.