

## Ormeau, 6 Paddy Circuit

Effortless Living in a Prime Ormeau Location!

Discover the perfect balance of space, comfort, and convenience at 6 Paddy Circuit, Ormeau. Built in 2015, this low-maintenance home sits on a generous 450m<sup>2</sup> block and offers a fantastic lifestyle for families, first-home buyers, and investors alike.

Step inside to find four well-sized bedrooms, including a master retreat with air conditioning and a ceiling fan for year-round comfort. Ceiling fans are also featured throughout the home, ensuring a breezy and comfortable atmosphere. With two spacious living areas, there's ample room for relaxation and entertaining. The modern kitchen boasts stone benchtops, making meal prep a breeze.

Security screen doors and windows provide peace of mind, while the versatile front yard offers additional parking options-a rare bonus!

Perfectly positioned in a sought-after pocket of Ormeau, this home places you within

# LJ Hooker

**Disclaimer:** All information contained therein is gathered from relevant third parties sources. We cannot guarantee or give any warranty about the information provided. Interested parties must rely solely on their own enquiries.

4 2 2

**For Sale**  
CONTACT AGENT

**View**  
[ljhooker.com.au/1YA4GWH](https://ljhooker.com.au/1YA4GWH)

**Contact**  
**Nicole Hintz**  
0403 895 705  
[nhintz@ljhgc.com.au](mailto:nhintz@ljhgc.com.au)

**Liza Neuss**  
0447 006 098  
[liza@ljhgc.com.au](mailto:liza@ljhgc.com.au)

**LJ Hooker Ormeau**  
**(07) 5549 4500**



walking distance of Livingstone Christian College, with shops, schools, and amenities all nearby. Plus, commuting is effortless with easy access to buses, Ormeau train station, and the M1.

Don't miss out on this fantastic opportunity-secure your slice of Ormeau today!

- \* 450m2
- \* Built in 2015
- \* 4 Bedrooms
- \* Master with air con & ceiling fan
- \* Ceiling fans throughout
- \* Two large living areas
- \* Kitchen with stone bench tops
- \* Security screen doors & windows
- \* Great size block with additional parking options at the front of the property.

## More About this Property

Property ID	1YA4GWH
Property Type	House
Land Area	450 m2
Including	Dishwasher Outdoor Entertaining Built-in-Robes Remote Garage

**Nicole Hintz 0403 895 705**

Director | L.R.E.A | Independent Contractor | [nhintz@ljhgc.com.au](mailto:nhintz@ljhgc.com.au)

**Liza Neuss 0447 006 098**

Sales Associate to Nicole Hintz Independent Contractor | [liza@ljhgc.com.au](mailto:liza@ljhgc.com.au)

**LJ Hooker Ormeau (07) 5549 4500**

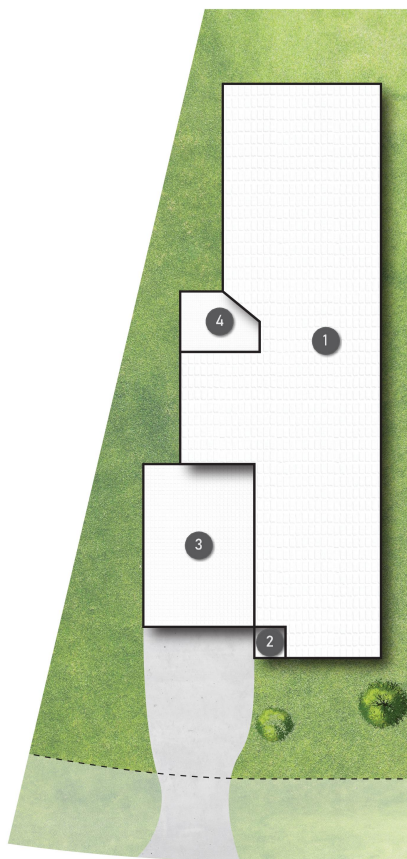
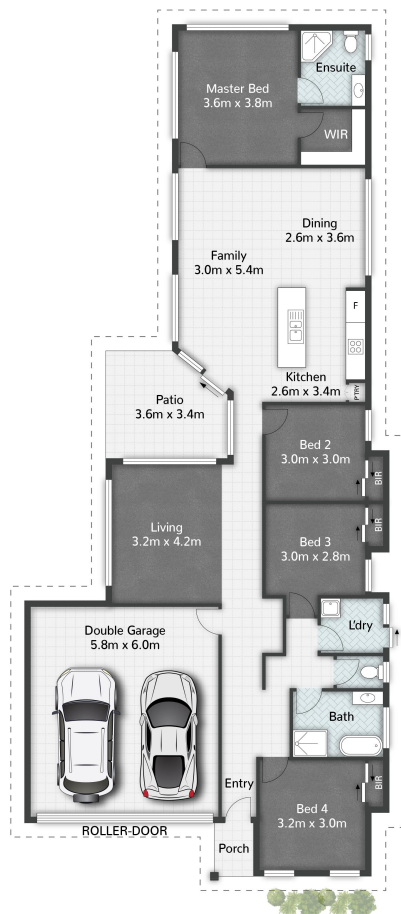
Unit 10 Norfolk Village Shopping Ctr, 170-174 Pascoe Road, ORMEAU QLD 4208  
[ormeau.ljhooker.com.au](http://ormeau.ljhooker.com.au) | [ormeau@ljhgc.com.au](mailto:ormeau@ljhgc.com.au)



# LJ Hooker

**Disclaimer:** All information contained therein is gathered from relevant third parties sources. We cannot guarantee or give any warranty about the information provided. Interested parties must rely solely on their own enquiries.

**LJ Hooker Ormeau**  
**(07) 5549 4500**



## LEGEND

- 1 RESIDENCE
- 2 PORCH
- 3 GARAGE
- 4 PATIO

Paddy Circuit

6 Paddy Circuit ORMEAU

4 | 2 | 2 | 205m<sup>2</sup>

**LJ Hooker**

All dimensions are approximate; they are subject to errors and inaccuracies and no liability will be accepted.  
Plans are shown for marketing purposes only.

**LJ Hooker**

**LJ Hooker Ormeau**  
**(07) 5549 4500**

**Disclaimer:** All information contained therein is gathered from relevant third parties sources.  
We cannot guarantee or give any warranty about the information provided. Interested parties must rely solely on their own enquiries.