

54 Maidenwell Road, Ormeau

## Luxury Family Residence of Scale, Style & Sophistication in Jacobs Ridge Estate

Positioned in the prestigious Jacobs Ridge Estate within the tightly held Northern Gold Coast corridor of Ormeau, this expansive 360m<sup>2</sup> residence delivers a refined blend of architectural scale, luxury finishes, and effortless family living. A residence of this calibre is a rare offering-an exceptional opportunity for the discerning buyer seeking space, lifestyle, and prestige in one complete package.

From the moment you enter, the home impresses with its thoughtful design and sense of proportion. The master suite is a private sanctuary, featuring a walk-in wardrobe and a beautifully appointed, newly renovated contemporary ensuite, delivering a true sense of luxury and retreat.

Three additional oversized bedrooms, all queen-sized or larger, ensure exceptional comfort for family and guests alike, with one of the bedrooms (bedroom2) further enhanced by its own study nook and walk-in robe.

Multiple living zones have been carefully curated to elevate everyday

4 2 2

### FOR SALE

Offers Over \$1,550,000

### VIEW

Sun 14th Jun @ 10:00AM - 10:30AM

### AGENTS

Shelley Green  
0477 790 660  
sgreen@ljhg.com.au

Nicole Hintz  
0403 895 705  
nhintz@ljhg.com.au

### AGENCY

LJ Hooker Ormeau  
(07) 5549 4500

All information contained therein is gathered from relevant third parties sources.  
We cannot guarantee or give any warranty about the information provided.  
Interested parties must rely solely on their own enquiries.

LJ Hooker

living. A versatile study or guest room offers a quiet, functional space, while the media room with raised seating creates an immersive cinema experience. At the heart of the home, the expansive open-plan living and dining area is bathed in natural light, designed to flow seamlessly to the outdoor spaces for effortless entertaining.

The expansive, newly modernised kitchen forms the true centrepiece of the home, showcasing premium appliances including a 900mm freestanding oven and gas cooktop. A walk-in butler's pantry enhances both functionality and discretion, allowing the kitchen to remain beautifully refined and uncluttered.

Outdoors, the property transforms into a private resort-style sanctuary. A covered alfresco entertaining area, private courtyard, and a stunning heated saltwater pool combine to deliver the ultimate setting for year-round relaxation and entertaining.

Set on a meticulously maintained block with manicured gardens and a tranquil parkland outlook, this quality-built Simonds residence is further enhanced by its outstanding convenience just moments to local schools, shopping, and motorway access.

#### Features & Highlights

- Expansive 360m<sup>2</sup>; quality-built Simonds residence
- Prestigious Jacobs Ridge Estate location
- Master retreat with walk-in robe & luxury renovated ensuite
- 3 additional oversized bedrooms (all queen-sized or larger)
- Bedroom with study nook & walk-in robe
- Dedicated home office / study
- Cinema-style media room with raised seating
- Expansive open-plan living & dining area
- Designer, newly modernised kitchen
- 900mm freestanding oven & gas cooktop
- Walk-in butler's pantry
- Newly renovated main bathroom + separate toilet
- High 2700mm ceilings & 2400mm doors
- Ducted multi-zone air conditioning
- Security doors throughout
- Covered outdoor alfresco entertaining area
- Private courtyard
- Resort-style heated saltwater pool
- 10.3kW solar system
- Extra parking bay with anchor point & side access
- Manicured lawns & landscaped gardens
- Peaceful parkland outlook
- Close to schools, shops & motorway access

A home of this calibre is a must-inspect, opportunities like this in Jacobs Ridge are tightly held and rarely offered.

## MORE DETAILS

Property ID 1YNBGWH  
Property Type House  
House Size 360 m2  
Land Area 752 m2

### Shelley Green 0477 790 660

Sales Specialist | [sgreen@ljhgc.com.au](mailto:sgreen@ljhgc.com.au)

### Nicole Hintz 0403 895 705

Director | L.R.E.A | Independent Contractor | [nhintz@ljhgc.com.au](mailto:nhintz@ljhgc.com.au)

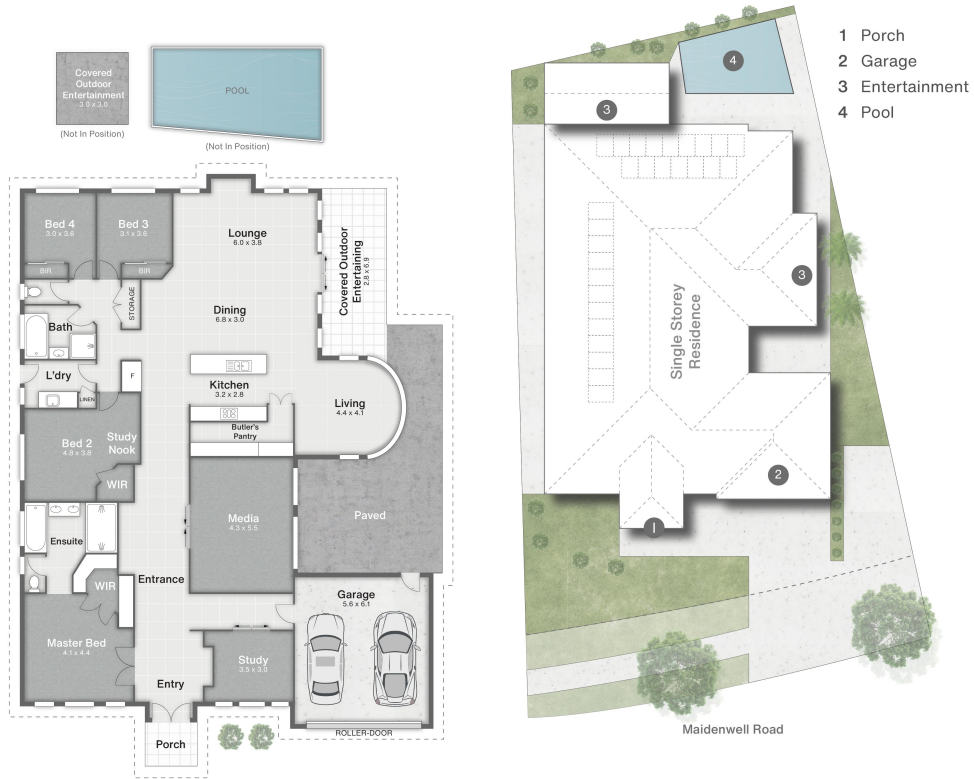
### LJ Hooker Ormeau (07) 5549 4500

Unit 10 Norfolk Village Shopping Ctr, 170-174 Pascoe Road,  
ORMEAU QLD 4208

[ormeau.ljhooker.com.au](http://ormeau.ljhooker.com.au) | [ormeau@ljhgc.com.au](mailto:ormeau@ljhgc.com.au)



All information contained therein is gathered from relevant third parties sources.  
We cannot guarantee or give any warranty about the information provided.  
Interested parties must rely solely on their own enquiries.



54 Maidenwell Road **ORMEAU**

4 | 2 | 2 | 360m<sup>2</sup> | 752m<sup>2</sup>



**DISCLAIMER**  
 This is not a legal document; all measurements and dimensions are approximate and are subject to errors, omission or misstatement. No liability will be accepted. Plans are shown for marketing purposes only.