

Ormeau, 5 Yalbah Court

Just Sold by Nicole Hintz



Nestled in a quiet cul-de-sac and direct path to walk to Norfolk State School, this charming low-set brick home is the perfect blend of comfort, convenience, and functionality. Whether you're stepping into the market for the first time, growing your family, or investing smartly, this property ticks all the right boxes.

Step inside to find a light-filled interior freshly painted in crisp white tones, complemented by modern tiling and new carpet. The heart of the home is a well-appointed kitchen with a sleek benchtop, stainless steel appliances, and ample cabinetry - all overlooking the open-plan living and dining zones that flow seamlessly to the outdoors.

The home offers four bedrooms, including a master with ensuite and built-in robe. All bedrooms come with ceiling fans, and there's split system air conditioning to keep things cool and comfortable year-round in two bedrooms.

For Sale
CONTACT AGENT

View
ljhooker.com.au/1YB1GWH

Contact
Nicole Hintz
0403 895 705
nhintz@ljhgc.com.au

Liza Neuss
0447 006 098
liza@ljhgc.com.au

LJ Hooker

Disclaimer: All information contained therein is gathered from relevant third parties sources. We cannot guarantee or give any warranty about the information provided. Interested parties must rely solely on their own enquiries.

LJ Hooker Ormeau
(07) 5549 4500

Out the back, an expansive covered alfresco area invites weekend BBQs and lazy afternoon lounging, while the fully fenced yard offers loads of space for kids or pets to play. Plus, with two garden sheds, there's no shortage of storage.

Features you'll love:

- * 695m2 block with huge side access
- * New paint, new carpet & new window coverings
- * All new lighting & ceiling fans throughout
- * 4 bedrooms, master with ensuite
- * Air conditioning in master bedroom, bedroom 2 & living area
- * Solar electricity system
- * Updated kitchen in the last 10 years
- * Open-plan living/dining + family room room off the kitchen
- * Outstanding alfresco entertaining area
- * 2 garden sheds
- * Single lock-up garage with roller door & internal access
- * Additional parking options with concreted side access
- * Family-friendly cul-de-sac with path to walk to Norfolk State School

More About this Property

Property ID	1YB1GWH
Property Type	House
House Size	176 m2
Land Area	695 m2
Including	Air Conditioning Dishwasher Outdoor Entertaining Built-in-Robes Solar Panels

Nicole Hintz 0403 895 705

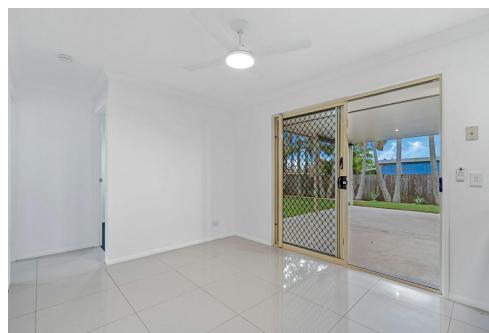
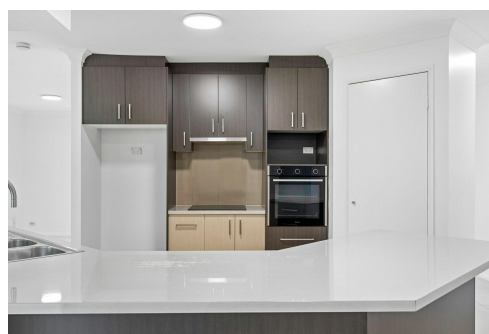
Director | L.R.E.A | Independent Contractor | nhintz@ljhgc.com.au

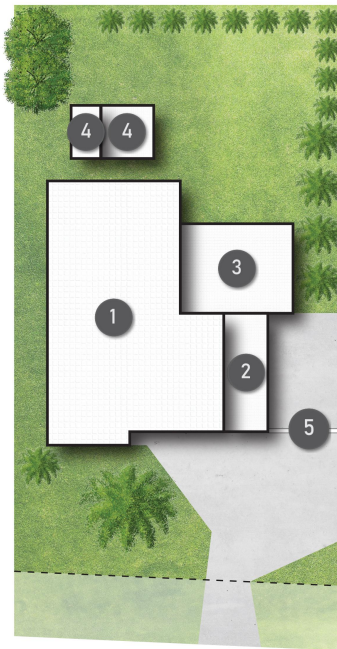
Liza Neuss 0447 006 098

Sales Associate to Nicole Hintz Independent Contractor | liza@ljhgc.com.au

LJ Hooker Ormeau (07) 5549 4500

Unit 10 Norfolk Village Shopping Ctr, 170-174 Pascoe Road, ORMEAU QLD 4208
ormeau.ljhooker.com.au | ormeau@ljhgc.com.au





Yalbah Court

LEGEND

- 1 RESIDENCE
- 2 GARAGE
- 3 ALFRESCO
- 4 SHED
- 5 SIDE ACCESS

5 Yalbah Court **ORMEAU**

4 | 2 | 1 | 176m²



All dimensions are approximate; they are subject to errors and inaccuracies and no liability will be accepted. Plans are shown for marketing purposes only.

LJ Hooker

LJ Hooker Ormeau
(07) 5549 4500

Disclaimer: All information contained therein is gathered from relevant third parties sources. We cannot guarantee or give any warranty about the information provided. Interested parties must rely solely on their own enquiries.