



5 Lilyvale Crescent, Ormeau

Ready to Move In - 5 Bedrooms, Pool & Alfresco Living

Welcome to 5 Lilyvale Crescent, Ormeau, a stunning family home in the highly sought-after Jacobs Ridge Estate. Known as one of the most popular lifestyle communities on the Northern Gold Coast, Jacobs Ridge offers tree-lined streets, an abundance of parks and pathways, and a welcoming family atmosphere that locals love. Positioned midway between Brisbane and the Gold Coast, this location provides the perfect balance of convenience and lifestyle - with quality schools, shopping, and transport all close by.

Set on a low-maintenance block, this spacious single-level residence has been designed with modern families in mind. Offering five bedrooms, a renovated kitchen with butler's pantry, multiple living zones, and seamless indoor-outdoor flow to a huge alfresco area, this home is move-in ready and packed with features. Add in a sparkling pool and 9kW solar, and you've got a property that delivers comfort, efficiency, and year-round entertaining.

Key Features:

- 5 Bedrooms - including a generous master suite with walk-in robe and private ensuite
- Renovated Kitchen with Butler's Pantry - sleek stone island, quality

All information contained therein is gathered from relevant third parties sources. We cannot guarantee or give any warranty about the information provided. Interested parties must rely solely on their own enquiries.

5 2 2

FOR SALE

Offers Over \$1,139,000

AGENTS

Nicole Hintz
0403 895 705
nhintz@ljhgc.com.au

Liza Neuss
0447 006 098
liza@ljhgc.com.au

AGENCY

LJ Hooker Ormeau
(07) 5549 4500



- appliances, and modern finishes
- Open Plan Living - light-filled living and dining zones that flow seamlessly outdoors
- Ducted Air Conditioning - year-round comfort throughout the home
- Huge Outdoor Entertaining Area - expansive covered alfresco space with tiled flooring, perfect for gatherings
- Private Pool Area - sparkling in-ground pool with stylish privacy screening
- 9kw Solar System - energy efficient with significant savings on power
- Double Garage + Garden shed
- " Low-Maintenance 518m² Block - minimal upkeep, maximum lifestyle

Lifestyle & Location:

This home ticks all the boxes for modern family living. The renovated kitchen with its butler's pantry is the heart of the home, overlooking the open plan living and dining areas. Sliding glass doors extend the living space out to the huge alfresco area, creating the perfect setting for entertaining or relaxing poolside.

With ducted air-conditioning for year-round comfort, a solar system to keep costs down, and every detail designed for functionality and style, this property is ready for you to simply move in and enjoy.

Set in a quiet, family-friendly street, you'll be minutes from schools, shops, parklands, and transport.

MORE DETAILS

Property ID	1YFQGWH
Property Type	House
House Size	353 m ²
Land Area	518 m ²

Nicole Hintz 0403 895 705

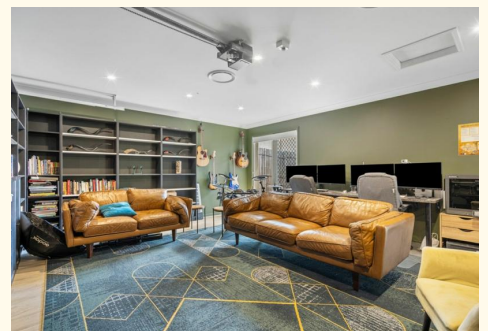
Director | L.R.E.A | Independent Contractor | nhintz@ljhgc.com.au

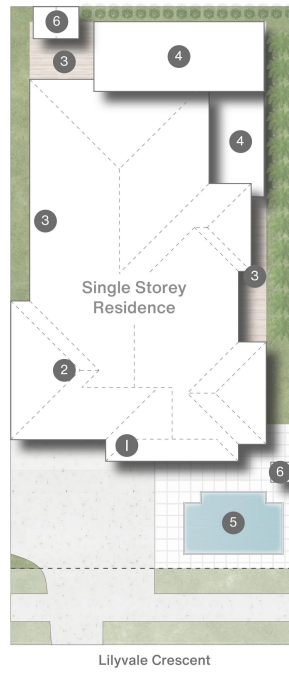
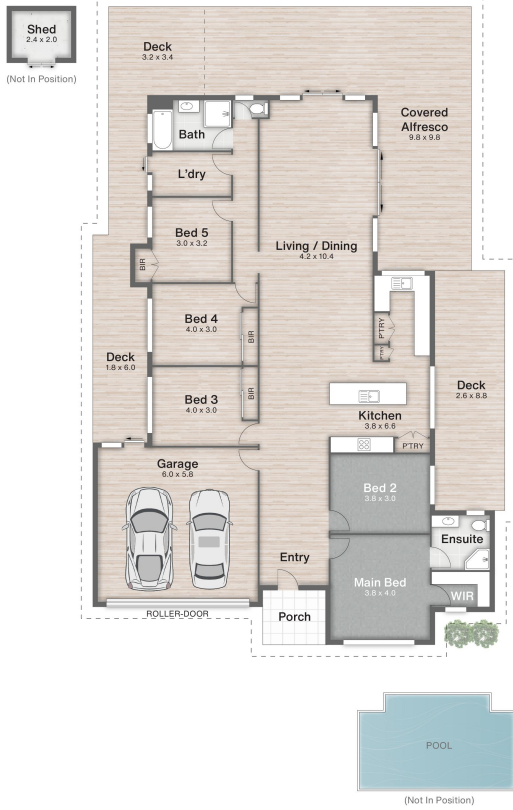
Liza Neuss 0447 006 098

Sales Associate to Nicole Hintz Independent Contractor | liza@ljhgc.com.au

LJ Hooker Ormeau (07) 5549 4500

Unit 10 Norfolk Village Shopping Ctr, 170-174 Pascoe Road,
ORMEAU QLD 4208
ormeau.ljhooker.com.au | ormeau@ljhgc.com.au





- 1 Porch
- 2 Garage
- 3 Deck
- 4 Alfresco
- 5 Pool
- 6 Shed

5 Lilyvale Crescent **ORMEAU**

5 | 2 | 2 | 353m² | 518m²

←
NORTH

DISCLAIMER
This is not a legal document; all measurements and dimensions are approximate and are subject to errors, omission or misstatement. No liability will be accepted. Plans are shown for marketing purposes only.