



Ormeau, 32 Penneshaw Crescent

Elevated Elegance with Exceptional Space and Light

Welcome to 32 Penneshaw Crescent, a stylish and thoughtfully designed home that perfectly blends comfort, functionality, and an elevated position to capture natural breezes. From the moment you step inside, you'll appreciate the wide entryway & spacious layout, modern finishes, and seamless indoor-outdoor integration that make this home an entertainer's delight. Whether you're hosting family gatherings, enjoying a quiet morning coffee on the deck, or taking advantage of the generous living spaces, this home has been designed for easy and enjoyable living.

With multiple living zones, an expansive deck, and an oversized garage with workshop space and drive-through access, this property delivers versatility and convenience for families, professionals, and hobbyists alike. Light-filled interiors create an inviting ambiance, while high-end features such as ducted air conditioning, ceiling fans, security screens, and a gas hot water system ensure year-round comfort and peace of mind.

4 2 2

For Sale
CONTACT AGENT

View
[ljhooker.com.au/1Y9UGWH](https://l.jhooker.com.au/1Y9UGWH)

Contact
Nicole Hintz
0403 895 705
nhintz@ljhgc.com.au

LJ Hooker

Disclaimer: All information contained therein is gathered from relevant third parties sources. We cannot guarantee or give any warranty about the information provided. Interested parties must rely solely on their own enquiries.

LJ Hooker Ormeau
(07) 5549 4500

Key Features You'll Love:

- 627m2 block
- 4 Bedrooms
- Master bedroom boasts a walk-in robe and private ensuite, direct access to back deck providing plenty of natural light and is truly master suite ready to be experienced
- While the additional bedrooms are generously sized with built-in robes and access to a second stylish bathroom.
- Light-Filled Living Areas - kitchen, and open-plan lounge and meals area are drenched in natural light, creating a warm and inviting atmosphere throughout.
- Kids retreat is located off the bedrooms wing and is serviced by a toilet & bathroom in this zone
- Modern Kitchen with Sleek Finishes - Designed for both function and style, the kitchen features ample storage, modern appliances, making it the heart of the home.
- Ducted air conditioning, ceiling fans, security screens, gas hot water & alarm system
- Stunning Entertainer's Deck - Elevated to take in the surrounding views and breezes, this expansive alfresco space is the perfect setting for weekend BBQs, morning coffee, or unwinding after a long day.
- Oversized Garage & Workshop - More than just a place to park, this garage provides extra space for a workshop and features drive-through access to the backyard-ideal for tradies, hobbyists, or extra vehicle storage.
- Prime Location - Positioned in a sought-after pocket of Ormeau, you're close to parks, schools, shopping, and transport, ensuring ultimate convenience for families and professionals alike.

This home offers everything you need for modern, relaxed living while providing plenty of extra space for work, play, and entertaining. If you're looking for a home that truly ticks all the boxes, don't miss this opportunity!

For more information or to arrange a viewing, contact us today!

More About this Property

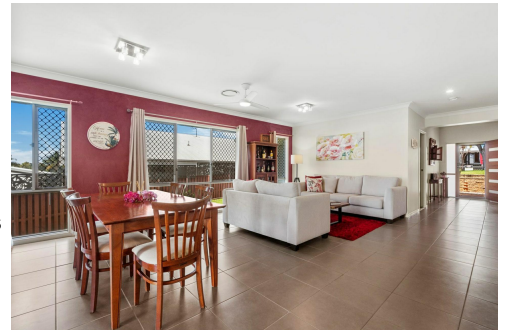
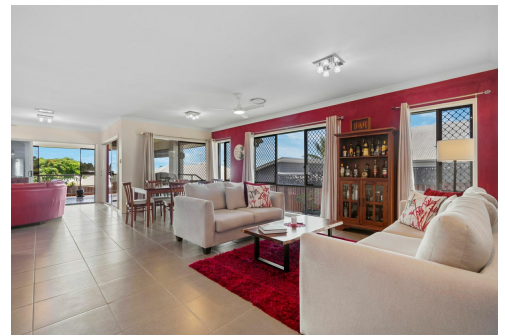
Property ID	1Y9UGWH
Property Type	House
House Size	273 m2
Land Area	625 m2
Including	Ducted Cooling Deck Outdoor Entertaining Built-in-Robes Remote Garage

Nicole Hintz 0403 895 705

Director | L.R.E.A | Independent Contractor | nhintz@ljhg.com.au

LJ Hooker Ormeau (07) 5549 4500

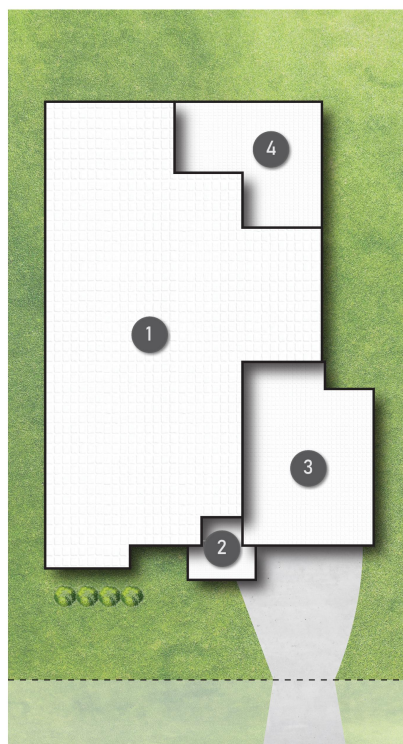
Unit 10 Norfolk Village Shopping Ctr, 170-174 Pascoe Road, ORMEAU QLD 4208
ormeau.ljhooker.com.au | ormeau@ljhg.com.au



LJ Hooker

Disclaimer: All information contained therein is gathered from relevant third parties sources. We cannot guarantee or give any warranty about the information provided. Interested parties must rely solely on their own enquiries.

LJ Hooker Ormeau
(07) 5549 4500



Penneshaw Crescent

LEGEND

- 1 RESIDENCE
- 2 PORCH
- 3 GARAGE
- 4 ALFRESCO

32 Penneshaw Crescent ORMEAU

4 | 2 | 2 | 273m²



All dimensions are approximate; they are subject to errors and inaccuracies and no liability will be accepted. Plans are shown for marketing purposes only.

LJ Hooker

LJ Hooker Ormeau
(07) 5549 4500

Disclaimer: All information contained therein is gathered from relevant third parties sources. We cannot guarantee or give any warranty about the information provided. Interested parties must rely solely on their own enquiries.