



32 Charlton Crescent, Ormeau

Only One Ever Owner - Now First Time Offered to the Market!

Welcome to a home that perfectly balances comfort, functionality and lifestyle. Positioned in the highly sought-after Northern Corridor, this four-bedroom residence presents an outstanding opportunity in a prime growth location.

Currently leased at \$740 a week until 10/9/26 - The same tenants have been in place for 10 Years

Boasting four generous bedrooms, the master suite features an ensuite, triple mirrored robe and sliding door access to the outdoor area. The remaining bedrooms are well-sized, complete with built-in robes, Ceiling fans and serviced by a well-maintained family-sized bathroom.

Designed with everyday living in mind, the open plan kitchen, dining and living areas form the true heart of the home. The kitchen offers ample storage and a functional layout ideal for entertaining or effortless day-to-day living. Flowing seamlessly outdoors, you're greeted by a spacious outdoor area providing a large open space perfect for weekend barbeques and relaxed afternoons.

4 2 2

FOR SALE

All Written Offers Submitted

VIEW

Sat 21st Feb @ 10:15AM - 10:45AM

AGENTS

Robbie Dunn
0404 466 793
rdunn@ljhgc.com.au

Shelley Green
0477 790 660
sgreen@ljhgc.com.au

AGENCY

LJ Hooker Coomera
(07) 5585 7888

All information contained therein is gathered from relevant third parties sources.
We cannot guarantee or give any warranty about the information provided.
Interested parties must rely solely on their own enquiries.



Positioned between the Gold Coast and Brisbane, this property is located in the highly sought-after pocket of Ormeau. Offering easy access to the M1, local shops, sporting facilities, and within walking distance to schools, parks and playgrounds, this is an opportunity not to be missed.

Property Highlights

- Four generous bedrooms, all with built-in robes and ceiling fans
- Master suite featuring private ensuite and outdoor access
- Functional kitchen with ample storage
- Seamless indoor-outdoor flow
- Split system air conditioning
- Spacious outdoor area
- Positioned between Brisbane and Gold Coast
- Located in the sought-after suburb of Ormeau
- Easy access to the M1, local shops, schools, parks and sporting facilities

Disclaimer: Whilst every effort has been made to ensure the accuracy of these particulars, no warranty is given by the owner or the agent as to their accuracy. Interested parties should not rely on these particulars as representations of fact but must instead satisfy themselves by inspection or otherwise.

MORE DETAILS

Property ID	43PYGTJ
Property Type	House
House Size	257 m2
Land Area	513 m2
Including	Ensuite
	Air Conditioning
	Toilets (2)
	Outdoor Entertaining
	Built-in-Robes
	Fully Fenced
	Remote Garage

Robbie Dunn 0404 466 793

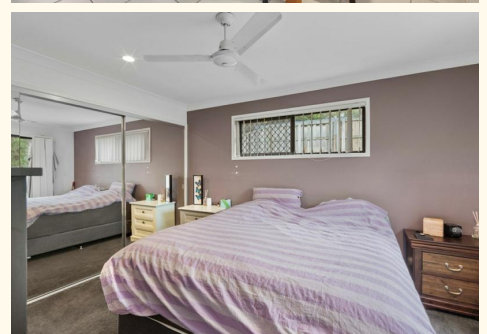
Licensee | Sales Specialist | rdunn@ljhgc.com.au

Shelley Green 0477 790 660

Sales Specialist | sgreen@ljhgc.com.au

LJ Hooker Coomera (07) 5585 7888

The Hub, 5/90 Days Road, UPPER COOMERA QLD 4209
coomera.ljhooker.com.au | coomera@ljhgc.com.au





32 Charlton Crescent **ORMEAU**

4 | 2 | 2 | 257m²

LJ Hooker

Coomera Ormeau Tamborine Mountain

All dimensions are approximate; they are subject to errors and inaccuracies and no liability will be accepted.
Plans are shown for marketing purposes only.

All information contained therein is gathered from relevant third parties sources.
We cannot guarantee or give any warranty about the information provided.
Interested parties must rely solely on their own enquiries.

LJ Hooker