



## Ormeau, 23 Summerlea Crescent

### Contemporary Family Retreat

4 2 2 1

**For Sale**  
Offers Over \$1,189,000

**View**  
[ljhooker.com.au/1Y9SGWH](https://ljhooker.com.au/1Y9SGWH)

**Contact**  
**Liza Neuss**  
0447 006 098  
[liza@ljhgc.com.au](mailto:liza@ljhgc.com.au)  
**Nicole Hintz**  
0403 895 705  
[nhintz@ljhgc.com.au](mailto:nhintz@ljhgc.com.au)

Tucked away in a sought-after pocket in Jacobs Ridge Estate, 23 Summerlea Crescent is a stunning blend of modern design and effortless family living. Offering four spacious bedrooms + study, two stylish bathrooms, and multiple living areas, this home is perfect for families who love to entertain and relax in style.

Step inside and be greeted by a sophisticated open-plan layout, where the designer kitchen with sleek cabinetry, premium appliances, and a large island bench flows seamlessly into the expansive living and dining zones. The effortless connection to the outdoor alfresco area makes it ideal for hosting guests year-round, complete with recessed lighting, and a lush garden backdrop.

Outside, a sparkling in-ground pool invites you to cool off on warm Queensland days, with an additional seating space providing the perfect spot for relaxation. The secure and private yard ensures peace of mind, while the double garage and additional shed add

# LJ Hooker

**LJ Hooker Ormeau**  
**(07) 5549 4500**

**Disclaimer:** All information contained therein is gathered from relevant third parties sources. We cannot guarantee or give any warranty about the information provided. Interested parties must rely solely on their own enquiries.

practicality to the property.

Other standout features include:

- 616m2
- Built in 2008
- Stylish kitchen with large island bench
- Huge open plan living area off the kitchen
- Separate rumpus/media room for family entertainment
- Study at the front of the home with poolside views for an amazing work from home outlook
- Master suite with walk-in robe and ensuite
- Three additional bedrooms with built-in robes
- Completely tiled throughout the home for easy care living
- Ducted air-conditioning and ceiling fans for year-round comfort
- Solar panels to help reduce energy costs
- Modern, low-maintenance landscaping
- Situated in a family-friendly neighbourhood, this home is close to parks, schools, shopping centres, and transport options, making it the perfect place to settle in and enjoy the best of suburban living.

Don't miss this opportunity! Contact us today to arrange an inspection.

## More About this Property

Property ID	1Y9SGWH
Property Type	House
House Size	256 m2
Land Area	616 m2
Including	Study Ducted Cooling Pool Dishwasher Outdoor Entertaining Built-in-Robes Remote Garage Solar Panels

**Liza Neuss 0447 006 098**

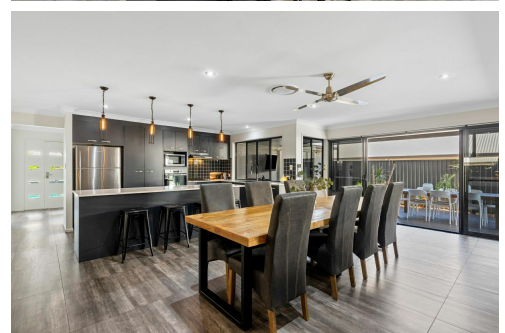
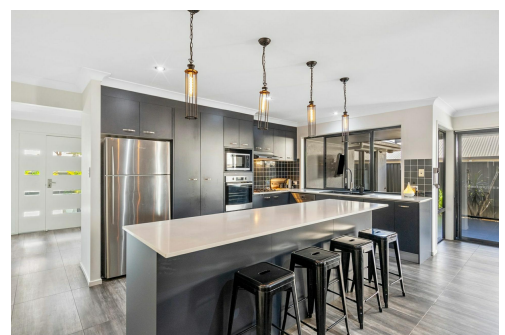
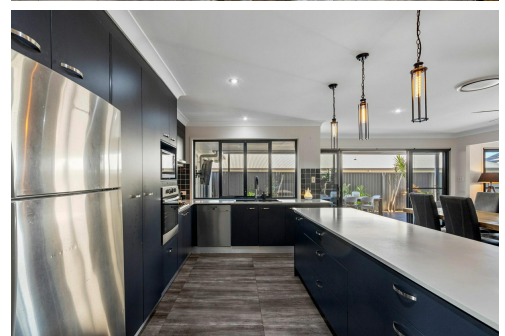
Sales Associate to Nicole Hintz Independent Contractor | [liza@ljhgc.com.au](mailto:liza@ljhgc.com.au)

**Nicole Hintz 0403 895 705**

Director | L.R.E.A | Independent Contractor | [nhintz@ljhgc.com.au](mailto:nhintz@ljhgc.com.au)

**LJ Hooker Ormeau (07) 5549 4500**

Unit 10 Norfolk Village Shopping Ctr, 170-174 Pascoe Road, ORMEAU QLD 4208  
[ormeau.ljhooker.com.au](http://ormeau.ljhooker.com.au) | [ormeau@ljhgc.com.au](mailto:ormeau@ljhgc.com.au)



# LJ Hooker

**Disclaimer:** All information contained therein is gathered from relevant third parties sources. We cannot guarantee or give any warranty about the information provided. Interested parties must rely solely on their own enquiries.

**LJ Hooker Ormeau  
(07) 5549 4500**