



18 Killarney Court, Ormeau

Exceptional Value | Huge Family Home Backing onto Bushland

This impressive 30+ square Coral Home offers outstanding value in the highly sought-after community of Jacobs Ridge. With generous proportions, multiple living zones and a peaceful bush backdrop, this home is designed to accommodate large or growing families with ease.

Inside, you'll find expansive living areas including a formal lounge and formal dining, complemented by a large open-plan living space that flows effortlessly to the outdoors. The well-appointed kitchen features a gas cooktop, dishwasher, stainless steel appliances, and a walk-in pantry, making it ideal for family living and entertaining. Accommodation includes four spacious bedrooms with built-in robes, plus a separate study or home office. Comfort is assured year-round with 7 split-system air conditioning units, ceiling fans throughout and security screens for peace of mind.

Set on a generous 707m² block, the fully fenced backyard offers side access, a 3m x 3m garden shed, water tank, and plenty of room for a pool. A great-sized covered patio overlooks the bushland backdrop, providing the perfect setting for relaxed outdoor entertaining.

4 🏠 2 🚿 2 🚗

FOR SALE
CONTACT AGENT

AGENTS

Nicole Hintz
0403 895 705
nhintz@ljhgc.com.au

AGENCY

LJ Hooker Ormeau
(07) 5549 4500

All information contained therein is gathered from relevant third parties sources.
We cannot guarantee or give any warranty about the information provided.
Interested parties must rely solely on their own enquiries.

 **LJ Hooker**

Property Features:

- Huge 30+ square Coral Home
- 4 bedrooms with built-in robes + study
- Kitchen with gas cooktop, dishwasher, stainless steel appliances & walk-in pantry
- Large open-plan living area
- Formal lounge and formal dining
- 2 bathrooms, including master ensuite
- 7 split-system air conditioning units
- 6.8kw solar system
- Ceiling fans throughout
- Security screens
- Double remote-controlled garage
- Fully fenced yard with side access
- 2 x Water tank & 3m x 3m garden shed
- 707m²; block with bush backdrop & room for a pool & landscaped garden
- Great-sized covered patio ideal for entertaining

Bring the whole family - and the boat - to truly appreciate the space, comfort and exceptional value this outstanding Jacobs Ridge home offers.

MORE DETAILS

Property ID	1YH9GWH
Property Type	House
House Size	295 m ²
Land Area	707 m ²

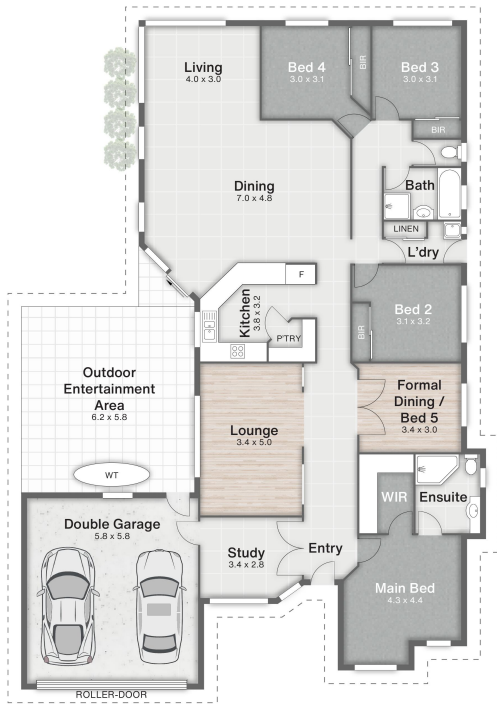
Nicole Hintz 0403 895 705

Director | L.R.E.A | Independent Contractor | nhintz@ljhgc.com.au

LJ Hooker Ormeau (07) 5549 4500

Unit 10 Norfolk Village Shopping Ctr, 170-174 Pascoe Road,
ORMEAU QLD 4208
ormeau.ljhooker.com.au | ormeau@ljhgc.com.au





- 1 Garage
- 2 Entertainment
- 3 Shed



Killarney Court

18 Killarney Court **ORMEAU**

5 | 2 | 2 | 295m² | 707m²



DISCLAIMER
 This is not a legal document; all measurements and dimensions are approximate and are subject to errors, omission or misstatement. No liability will be accepted. Plans are shown for marketing purposes only.