

18 Haase Crescent, Ormeau

## PRISTINE TURN-KEY LIVING ON MASSIVE BLOCK WITH SIDE ACCESS

Positioned within a picturesque, family-friendly neighbourhood where quiet streets and generous yards create the perfect backdrop for quintessential childhoods, this beautifully maintained home delivers effortless move-in ready living with outstanding space to grow. Set upon a huge parcel of land with valuable side access for caravans, boats or future additions, the property blends comfort and flexibility in a superb location within easy walking distance of highly sought-after Norfolk Village State School.

Manicured landscaping welcomes you into an immaculate interior where generous proportions provide plenty of space for families to connect and unwind. Ducted air-conditioning services the flowing layout, with open-plan living and dining set atop tiled floors, while a huge separate lounge offers a comfortable retreat with plush carpet underfoot. Presented in a timeless white aesthetic, the kitchen impresses with abundant storage, premium stainless appliances and crisp stone benches, including a breakfast bar for casual seating.

Sliding doors extend the living outdoors to a large covered patio,

4  2  2 

**FOR SALE**  
CONTACT AGENT

**VIEW**  
By Appointment

**AGENTS**  
Liza Neuss  
0447 006 098  
liza@ljhg.com.au

Nicole Hintz  
0403 895 705  
nhintz@ljhg.com.au

**AGENCY**  
LJ Hooker Ormeau  
(07) 5549 4500

All information contained therein is gathered from relevant third parties sources.  
We cannot guarantee or give any warranty about the information provided.  
Interested parties must rely solely on their own enquiries.

 **LJ Hooker**

perfectly sized for hosting family and friends. Overlooking the expansive backyard and mature gardens, the lush lawn provides abundant fenced space for active children and pets while also offering excellent options to add a swimming pool if desired.

All four bedrooms are plushly carpeted and include plantation shutters and ceiling fans, with three also offering built-in storage. The master opens to the covered alfresco and includes a walk-in robe and spacious ensuite with excellent storage, while the remainder of the household is serviced by a pristine main bathroom thoughtfully designed with a separate wet room and separate toilet. Additional features include a separate laundry, solar electricity, garden shed, double remote garage and gated wide side access.

Positioned within a peaceful pocket surrounded by leafy parkland and green corridors, the home enjoys a relaxed lifestyle setting with everyday convenience close at hand. Local shops, dining and transport options are just minutes away, while excellent schooling and family amenities ensure everything needed for comfortable living is within easy reach. Offering immaculate presentation, exceptional land size and superb flexibility, this is an enviable opportunity to secure a move-in ready home with space to grow!

- 1116m<sup>2</sup> block with wide side access
- Manicured landscaping and immaculate interior with ducted air-conditioning throughout
- Open-plan living and dining with tiled floors plus huge separate lounge with plush carpet
- Pristine kitchen with crisp white cabinetry, stone benches, premium stainless appliances and breakfast bar seating
- Large covered patio overlooking expansive backyard and mature gardens
- Generous frontage and rear lawn with abundant fenced space for children and pets plus options to add a swimming pool
- Four plush carpeted bedrooms with ceiling fans; three including built-in storage
- Master bedroom with walk-in robe and spacious ensuite with excellent storage
- Pristine main bathroom with separate wet room and separate toilet
- Separate laundry/plantation shutters/solar electricity/garden shed
- Double remote garage plus gated wide side access
- Walk to Norfolk Village State School
- Minutes shops, dining and both public and road transport corridors
- Outstanding move-in ready opportunity

## MORE DETAILS

Property ID	1YKKGWH
Property Type	House
House Size	267 m2
Land Area	1116 m2
Including	Dishwasher Outdoor Entertaining Built-in-Robes Solar Panels

### Liza Neuss 0447 006 098

Sales Associate to Nicole Hintz Independent Contractor |  
liza@ljhgc.com.au

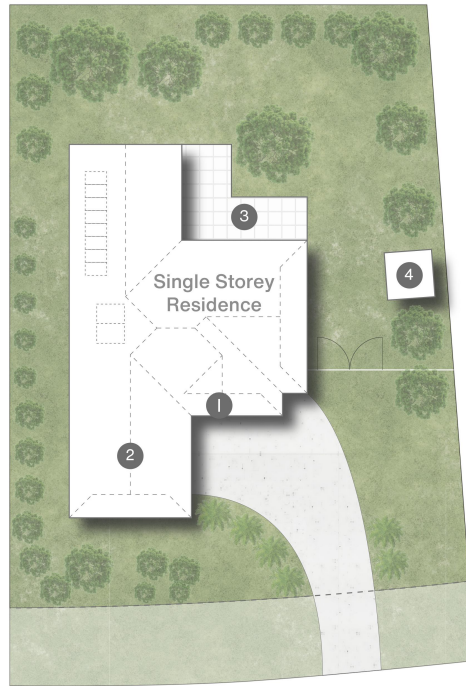
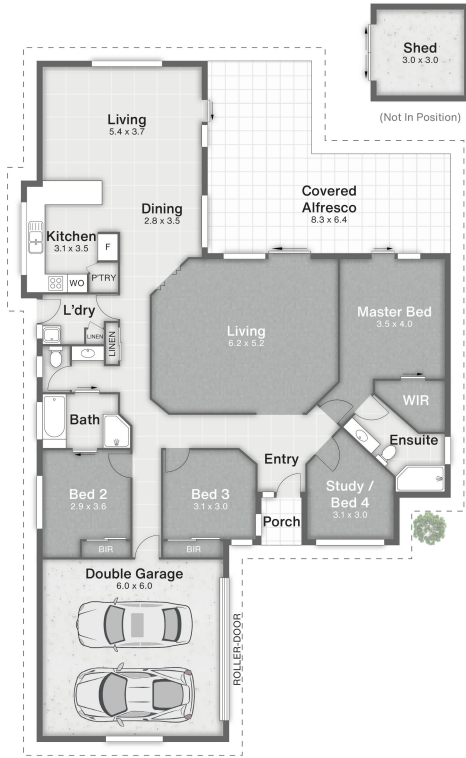
### Nicole Hintz 0403 895 705

Director | L.R.E.A | Independent Contractor | nhintz@ljhgc.com.au

### LJ Hooker Ormeau (07) 5549 4500

Unit 10 Norfolk Village Shopping Ctr, 170-174 Pascoe Road,  
ORMEAU QLD 4208  
ormeau.ljhooker.com.au | ormeau@ljhgc.com.au





- 1 Porch
- 2 Garage
- 3 Alfresco
- 4 Shed

Haase Crescent

18 Haase Crescent **ORMEAU**

4 | 2 | 2 | 267m<sup>2</sup> | 1,116m<sup>2</sup>



**DISCLAIMER**  
 This is not a legal document; all measurements and dimensions are approximate and are subject to errors, omission or misstatement. No liability will be accepted. Plans are shown for marketing purposes only.