
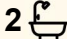
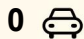




17 Lancelot Crescent, Ormeau

4  2  0 

## SOLD BY NICOLE HINTZ TEAM

- 600m2 approximately fenced block
- Low-set brick home
- Wheelchair ramp installed
- Open-plan, tiled lounge and dining
- Second lounge room with study area/formal dining
- Kitchen with breakfast bar
- Covered alfresco overlooking backyard
- Four built-in bedrooms
- Master ensuite with accessible friendly bathroom
- Accessible friendly main bathroom
- Separate laundry
- Side Gate Access to backyard with concrete pad and garden shed

**FOR SALE**

AUCTION On Site 22/11/2025

**AGENTS**

Nicole Hintz  
0403 895 705  
nhintz@ljhgc.com.au

Liza Neuss  
0447 006 098  
liza@ljhgc.com.au

**AGENCY**

LJ Hooker Ormeau  
(07) 5549 4500

ONSITE AUCTION: 22nd November 2025 @ 10:30am

Disclaimer: This property is being sold by auction and therefore a price guide cannot be provided. The website may have filtered the property into a price bracket for website functionality purposes.

All information contained therein is gathered from relevant third parties sources.  
We cannot guarantee or give any warranty about the information provided.  
Interested parties must rely solely on their own enquiries.

 **LJ Hooker**

## MORE DETAILS

Property ID 1YGTGWH  
Property Type House  
Land Area 600 m2

**Nicole Hintz 0403 895 705**

Director | L.R.E.A | Independent Contractor | [nhintz@ljhgc.com.au](mailto:nhintz@ljhgc.com.au)

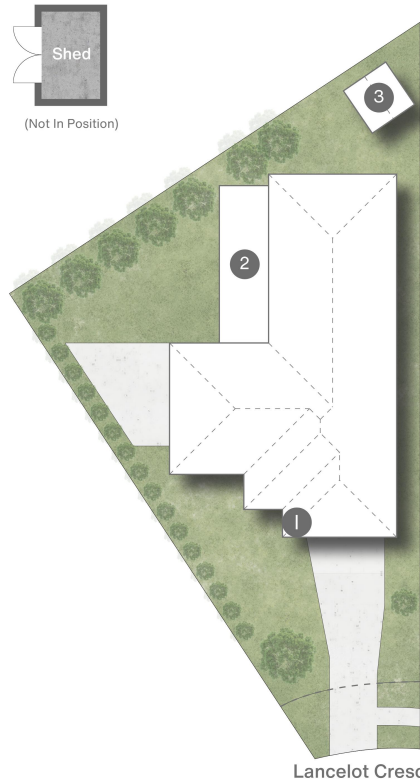
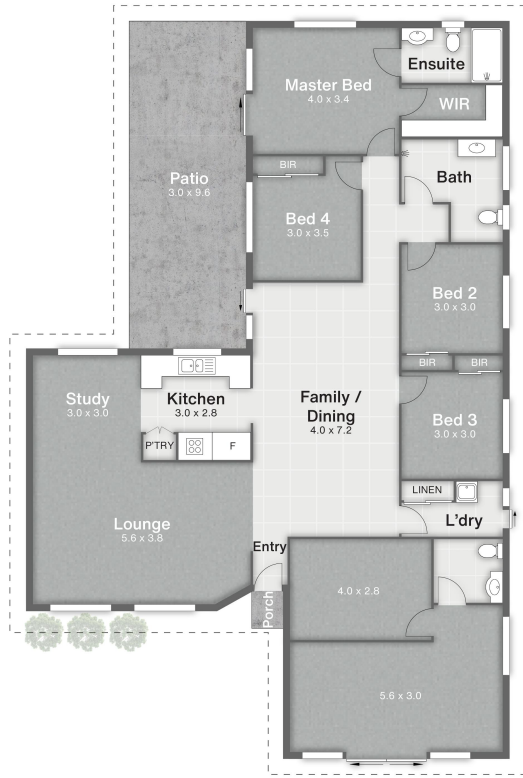
**Liza Neuss 0447 006 098**

Sales Associate to Nicole Hintz Independent Contractor |  
[liza@ljhgc.com.au](mailto:liza@ljhgc.com.au)

**LJ Hooker Ormeau (07) 5549 4500**

Unit 10 Norfolk Village Shopping Ctr, 170-174 Pascoe Road,  
ORMEAU QLD 4208  
[ormeau.ljhooker.com.au](http://ormeau.ljhooker.com.au) | [ormeau@ljhgc.com.au](mailto:ormeau@ljhgc.com.au)





- 1 Porch
- 2 Patio
- 3 Shed

17 Lancelot Crescent **ORMEAU**

4 | 2 | 213m<sup>2</sup> | 600m<sup>2</sup>



**DISCLAIMER**  
 This is not a legal document; all measurements and dimensions are approximate and are subject to errors, omission or misstatement. No liability will be accepted. Plans are shown for marketing purposes only.