



Ormeau, 2/34 Conebush Circuit

Looking For A Duplex In The Heart Of Norfolk Village??

REGISTER YOUR DETAILS FOR THE FIRST INSPECTION TIME

Nestled in the vibrant heart of Norfolk Village, Ormeau, this delightful low-maintenance duplex is the ideal opportunity for first-time buyers, savvy investors, or those craving an effortless lifestyle. With no body corporate fees and within walking distance to the renowned Norfolk Village State School, this property combines convenience with smart living.

Key Features You'll Love:

- * Side access to the backyard-perfect for extra storage or parking needs.
- * Flat driveway offering additional parking options.
- * Spacious open-plan living: Enjoy a generously sized lounge and dining area with ceiling fans for year-round comfort.

LJ Hooker

Disclaimer: All information contained therein is gathered from relevant third parties sources. We cannot guarantee or give any warranty about the information provided. Interested parties must rely solely on their own enquiries.

SOLD

3  2  1 

For Sale
CONTACT AGENT

View
ljhooker.com.au/1Y6XGWH

Contact
Nicole Hintz
0403 895 705
nhintz@ljhgc.com.au

Liza Neuss
0447 006 098
liza@ljhgc.com.au

LJ Hooker Ormeau
(07) 5549 4500

- * Well-equipped kitchen boasting ample storage and bench space for effortless meal prep.
- * Three bedrooms: Master with a private ensuite, plus two others with built-in robes.
- * Family bathroom featuring an internal laundry
- * Single lock-up garage

Location Highlights:

Step outside and discover everything at your doorstep! Stroll to Norfolk Village State School, nearby parklands, and bus stops. A quick drive will take you to major shopping centers, dining hubs, and additional schools, while the M1 and train station make commuting to Brisbane or the Gold Coast a breeze.

Don't miss this incredible opportunity-whether it's your first home, next investment, or an upgrade in lifestyle, this home ticks all the boxes!

More About this Property

Property ID	1Y6XGWH
Property Type	DuplexSemi-detached
Including	Built-in-Robes Fully Fenced

Nicole Hintz 0403 895 705

Director | L.R.E.A | Independent Contractor | nhintz@ljhgc.com.au

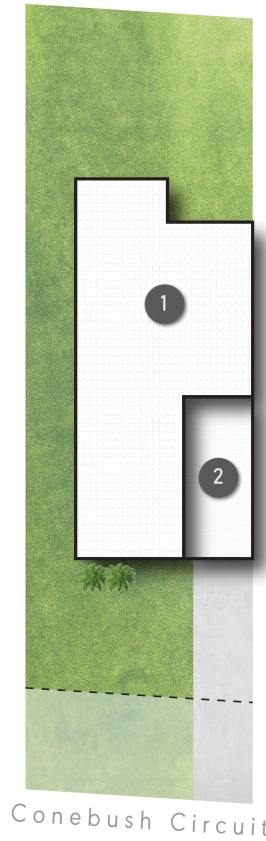
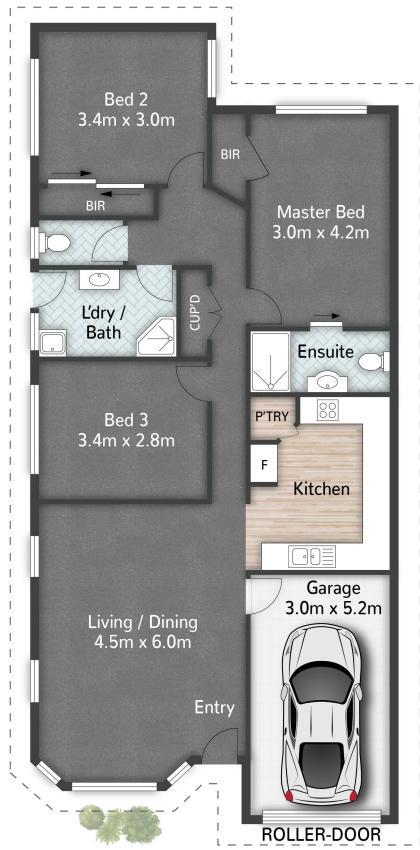
Liza Neuss 0447 006 098

Sales Associate to Nicole Hintz Independent Contractor | liza@ljhgc.com.au

LJ Hooker Ormeau (07) 5549 4500

Unit 10 Norfolk Village Shopping Ctr, 170-174 Pascoe Road, ORMEAU QLD 4208
ormeau.ljhooker.com.au | ormeau@ljhgc.com.au





LEGEND
 1 RESIDENCE
 2 GARAGE



2/34 Conebush Circuit **ORMEAU**

3 | 2 | 1 | 104m²



All dimensions are approximate; they are subject to errors and inaccuracies and no liability will be accepted. Plans are shown for marketing purposes only.