



Ormeau, 2/10 Carrieton Street

Spacious Duplex Living with a Rare Yard in Jacobs Ridge

Positioned in the highly desirable Jacobs Ridge Estate, this duplex offers an unbeatable combination of space, privacy, and location-without the hassle of body corporate fees!

Perfectly located across from open green space, this property is ideal for families, downsizers, or savvy investors seeking low-maintenance living without compromise.

- Massive fenced yard - one of the largest you'll find in a duplex!
- Expansive open-plan living and dining, flooded with natural light
- Modern kitchen with gas cooking, great storage, and large island bench
- Private master suite at the front of the home with ensuite and separation from the rear bedrooms
- Three bedrooms in total, all with built-ins and ceiling fans
- Split system air conditioning in the main living area and ceiling fans throughout for year-round comfort

3 2 2

For Sale
Please Call

View
ljhooker.com.au/1YCJGWH

Contact
Nicole Hintz
0403 895 705
nhintz@ljhgc.com.au

Shelley Green
0477 790 660
sgreen@ljhgc.com.au

LJ Hooker

LJ Hooker Ormeau
(07) 5549 4500

Disclaimer: All information contained therein is gathered from relevant third parties sources. We cannot guarantee or give any warranty about the information provided. Interested parties must rely solely on their own enquiries.

- Remote double garage with internal access
- No body corporate fees - just shared insurance

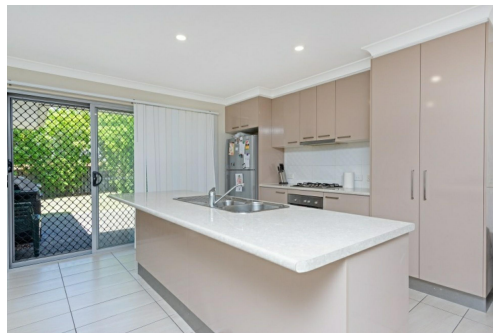
Enjoy peaceful walks through Jacobs Ridge's extensive parklands and trails, with schools, shops, and the M1 all just minutes away.

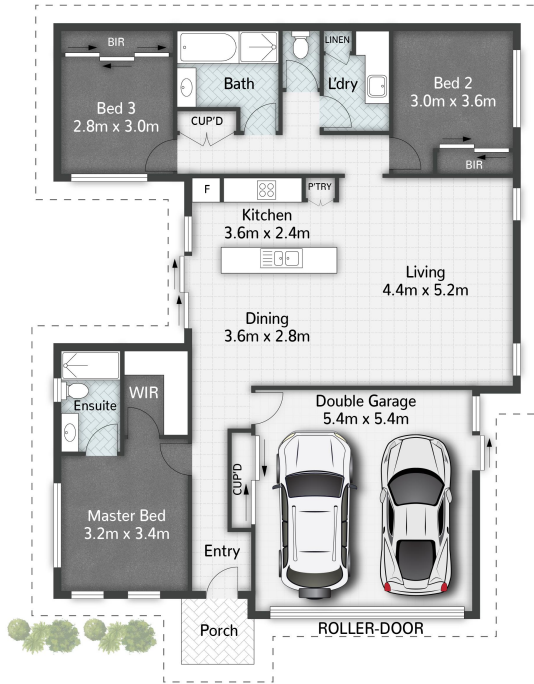
More About this Property

Property ID	1YCJGWH
Property Type	DuplexSemi-detached

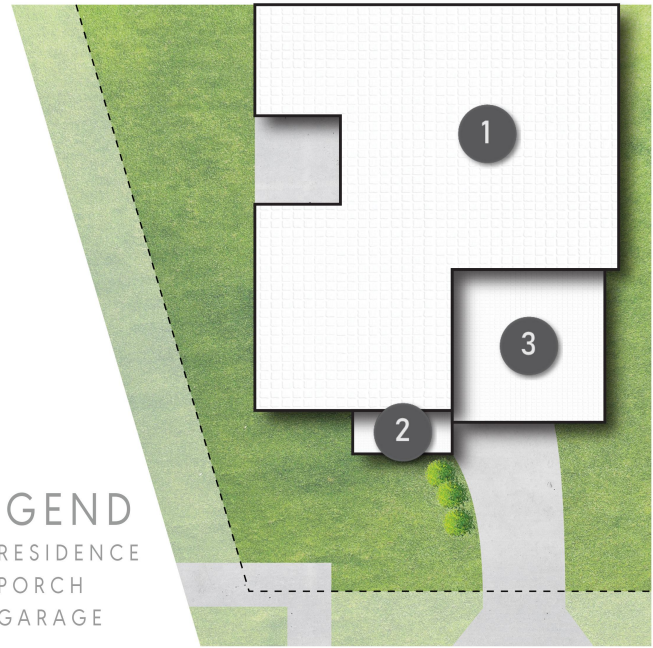
Nicole Hintz 0403 895 705
 Director | L.R.E.A | Independent Contractor | nhintz@ljhgc.com.au
Shelley Green 0477 790 660
 Sales Specialist | sgreen@ljhgc.com.au

LJ Hooker Ormeau (07) 5549 4500
 Unit 10 Norfolk Village Shopping Ctr, 170-174 Pascoe Road, ORMEAU QLD 4208
ormeau.ljhooker.com.au | ormeau@ljhgc.com.au





LEGEND
 1 RESIDENCE
 2 PORCH
 3 GARAGE



Carrieton Street



10 Carrieton Street **ORMEAU**

3 | 2 | 2 | 149m²

LJ Hooker

All dimensions are approximate; they are subject to errors and inaccuracies and no liability will be accepted. Plans are shown for marketing purposes only.

LJ Hooker

LJ Hooker Ormeau
(07) 5549 4500

Disclaimer: All information contained therein is gathered from relevant third parties sources. We cannot guarantee or give any warranty about the information provided. Interested parties must rely solely on their own enquiries.