



Ormeau, 27B Conebush Circuit

SOLD BY NICOLE HINTZ TEAM

Perfectly positioned in the heart of sought-after Norfolk Village, this standout duplex offers a rare opportunity-set on a corner block with one of the biggest backyards we've seen for a duplex in a long time! Whether you're a first-time buyer, investor, or downsizer, this low-maintenance home is a winning combination of space, style, and location-without the burden of body corporate fees.

Step through the front door into a spacious open-plan lounge and dining area, beautifully finished with contemporary tiled flooring. The well-appointed kitchen is larger than most in similar properties, featuring excellent bench space and ample storage-ideal for day-to-day living and entertaining.

Extend your living outdoors under the covered courtyard or enjoy the rare expanse of the fully fenced backyard-perfect for kids, pets, or even future enhancements.



For Sale
CONTACT AGENT

View
ljhooker.com.au/1YBQGWH

Contact
Nicole Hintz
0403 895 705
nhintz@ljhg.com.au

Liza Neuss
0447 006 098
liza@ljhg.com.au

LJ Hooker

Disclaimer: All information contained therein is gathered from relevant third parties sources. We cannot guarantee or give any warranty about the information provided. Interested parties must rely solely on their own enquiries.

LJ Hooker Ormeau
(07) 5549 4500

The home includes three bedrooms, two with built-in robes, while the master enjoys its own private ensuite. A spacious family bathroom with an internal laundry rounds out the thoughtful layout.

Additional features:

- Prime corner block with exceptional yard space
- No body corporate-freehold style living
- Bright and open-plan living/dining with modern flooring
- Generous kitchen with loads of storage and bench space
- Three well-sized bedrooms, master with ensuite
- Covered courtyard and huge, low-maintenance backyard
- Single lock-up garage
- Walk to Norfolk Village State School, parks, and bus stops
- Easy access to M1, Ormeau train station, shops, and dining

This home is a rare find in the Norfolk Village market-act fast to make it yours!

** DISCLAIMER: The air conditioner in the living area is not operational and needs to be replaced at the buyers expense. This will be noted on the contract of sale.

More About this Property

Property ID	1YBQGWH
Property Type	DuplexSemi-detached
House Size	112 m2
Including	Outdoor Entertaining Built-in-Robes

Nicole Hintz 0403 895 705

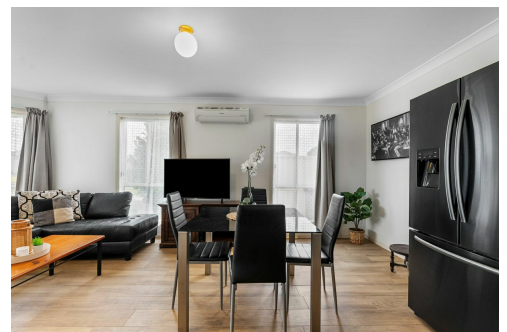
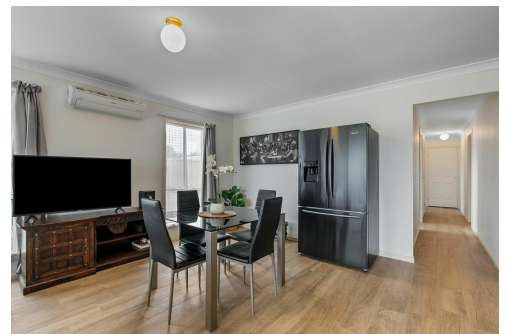
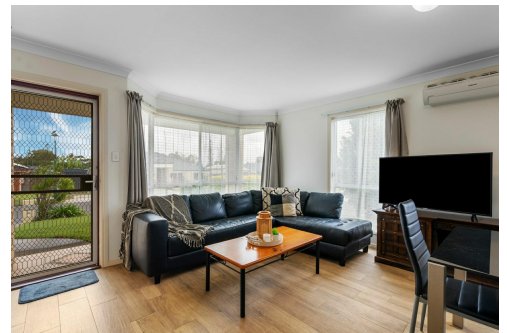
Director | L.R.E.A | Independent Contractor | nhintz@ljhgc.com.au

Liza Neuss 0447 006 098

Sales Associate to Nicole Hintz Independent Contractor | liza@ljhgc.com.au

LJ Hooker Ormeau (07) 5549 4500

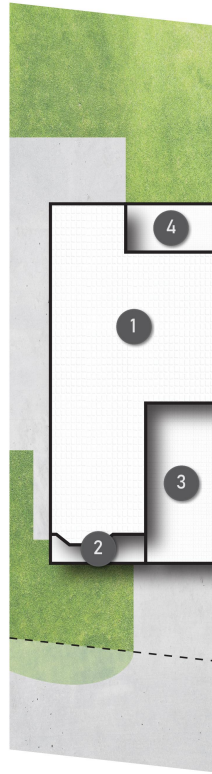
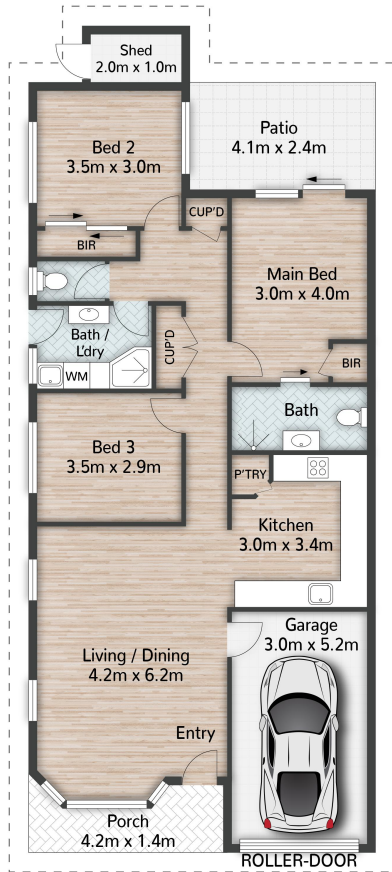
Unit 10 Norfolk Village Shopping Ctr, 170-174 Pascoe Road, ORMEAU QLD 4208
ormeau.ljhooker.com.au | ormeau@ljhgc.com.au



LJ Hooker

Disclaimer: All information contained therein is gathered from relevant third parties sources. We cannot guarantee or give any warranty about the information provided. Interested parties must rely solely on their own enquiries.

**LJ Hooker Ormeau
(07) 5549 4500**



Conebush Circuit

LEGEND

- 1 RESIDENCE
- 2 PORCH
- 3 GARAGE
- 4 PATIO



27B Conebush Circuit ORMEAU

 3 |
  2 |
  1 |
  112m²



All dimensions are approximate; they are subject to errors and inaccuracies and no liability will be accepted. Plans are shown for marketing purposes only.

LJ Hooker

LJ Hooker Ormeau
(07) 5549 4500

Disclaimer: All information contained therein is gathered from relevant third parties sources. We cannot guarantee or give any warranty about the information provided. Interested parties must rely solely on their own enquiries.