



## Ormeau, 15 Oppermann Drive

Space, Privacy & Potential on Over 2 Acres!

Welcome to 15 Oppermann Drive, Ormeau - a rare acreage opportunity that offers space to spread out, live comfortably, and make the property truly your own.

Positioned on an expansive 8101m<sup>2</sup> block, this home is ideal for buyers needing easy access to a large shed, thanks to the wide frontage and potential to add a second driveway. Tradies, car enthusiasts, or anyone with a collection of toys - this is the one you've been waiting for.

The home itself is well-appointed with 4 bedrooms, multiple living zones, and a huge multi-purpose room that's perfect for a home business, media room, or even dual living conversion for extended family or guests.

Step outside and you're set for summer with a spacious outdoor entertaining area and resort-style pool-all overlooking private, leafy surrounds.



### For Sale

Offers Over \$1,650,000

### View

Sat 14th Jun @ 1:00PM - 1:30PM

### Contact

#### Nicole Hintz

0403 895 705

nhintz@ljhg.com.au

#### Liza Neuss

0447 006 098

liza@ljhg.com.au

# LJ Hooker

**Disclaimer:** All information contained therein is gathered from relevant third parties sources.

We cannot guarantee or give any warranty about the information provided. Interested parties must rely solely on their own enquiries.

**LJ Hooker Ormeau**  
(07) 5549 4500



And for the ultimate in storage and functionality, the massive 4 Car shed offers ample space for vehicles, tools, or hobbies, with additional storage nooks inside.

Key Features:

- 4 bedrooms + large multi-purpose room
- Multiple living areas for flexible living
- Newly replaced windows and doors imported from Germany - Sound Proof
- Expansive 8101m² block with room for second driveway
- Huge Shed 15m x 14m Fits 4 Car's roller door access + extra storage
- Pool & outdoor entertaining
- Dual living potential or home business setup

Homes with this much versatility and space rarely come to market - seize the opportunity to create the lifestyle you've been dreaming of.

More About this Property

Property ID	1YBNGWH
Property Type	AcreageSemi-rural
House Size	332 m2
Land Area	8101 m2
Including	Air Conditioning Pool Dishwasher Solar Panels

Nicole Hintz 0403 895 705

Director | L.R.E.A | Independent Contractor | [nhintz@ljhgc.com.au](mailto:nhintz@ljhgc.com.au)

Liza Neuss 0447 006 098

Sales Associate to Nicole Hintz Independent Contractor | [liza@ljhgc.com.au](mailto:liza@ljhgc.com.au)

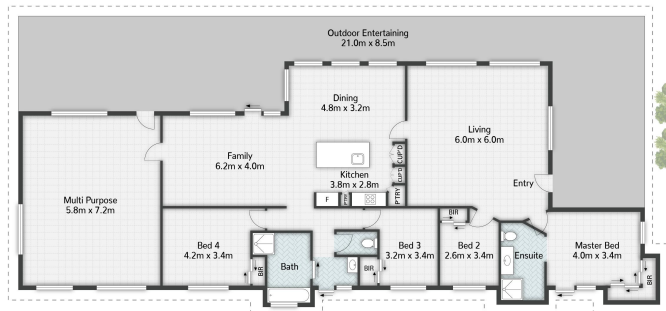
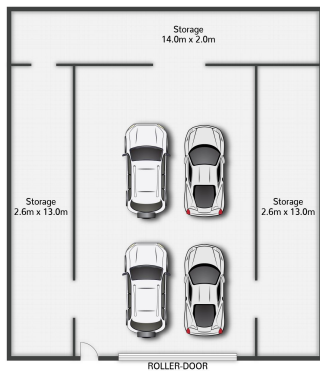
LJ Hooker Ormeau (07) 5549 4500

Unit 10 Norfolk Village Shopping Ctr, 170-174 Pascoe Road, ORMEAU QLD 4208  
[ormeau.ljhooker.com.au](http://ormeau.ljhooker.com.au) | [ormeau@ljhgc.com.au](mailto:ormeau@ljhgc.com.au)



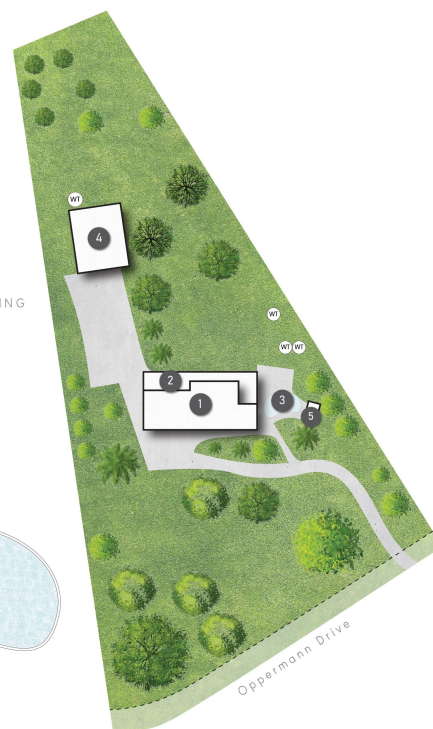
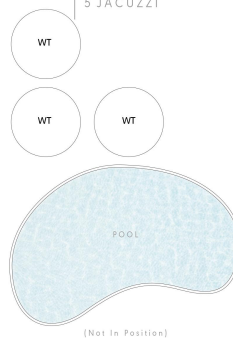
**Disclaimer:** All information contained therein is gathered from relevant third parties sources. We cannot guarantee or give any warranty about the information provided. Interested parties must rely solely on their own enquiries.

**LJ Hooker Ormeau**  
**(07) 5549 4500**



#### LEGEND

- 1 RESIDENCE
- 2 ENTERTAINING
- 3 POOL
- 4 GARAGE
- 5 JACUZZI



15 Oppermann Drive **ORMEAU**

4 | 2 | 4 | 332m<sup>2</sup> | 8101m<sup>2</sup>



All dimensions are approximate; they are subject to errors and inaccuracies and no liability will be accepted. Plans are shown for marketing purposes only.

# LJ Hooker

**LJ Hooker Ormeau**  
**(07) 5549 4500**

**Disclaimer:** All information contained therein is gathered from relevant third parties sources. We cannot guarantee or give any warranty about the information provided. Interested parties must rely solely on their own enquiries.