

Ormeau Hills, 92 Mccreadie Road

Elevated Living Awaits - Family Comfort with Poolside Bliss

Welcome to 92 Mccreadie Road, Ormeau Hills - a beautifully designed family home nestled in the highly regarded Elevate Estate. Offering a seamless blend of comfort, style, and practicality, this home is perfect for those who love relaxed living with a touch of resort-style flair.

Boasting four spacious bedrooms, including a master retreat complete with walk-in robe and ensuite, this home delivers effortless functionality for the whole family. The open-plan kitchen, dining, and living area forms the heart of the home, flowing out to a covered patio and alfresco zone - ideal for year-round entertaining. The sparkling pool is the ultimate summer escape, while the separate lounge offers a cosy space to unwind indoors.

Set on a low-maintenance block with a double garage and additional shed, every detail has been thoughtfully considered. Positioned just moments from local parks, schools, and



For Sale
Please Call

View
ljhooker.com.au/1YAPGWH

Contact
Liza Neuss
0447 006 098
liza@ljhgc.com.au
Nicole Hintz
0403 895 705
nhintz@ljhgc.com.au

LJ Hooker

Disclaimer: All information contained therein is gathered from relevant third parties sources. We cannot guarantee or give any warranty about the information provided. Interested parties must rely solely on their own enquiries.

LJ Hooker Ormeau
(07) 5549 4500

shopping, this home is a true standout in a premium location.

Features:

- 4 spacious bedrooms with built-in robes
- Master suite with walk-in robe and private ensuite
- Open-plan kitchen with ample storage and modern appliances
- Combined dining and living space with seamless outdoor flow
- Separate lounge for additional living space
- Covered patio plus alfresco area - perfect for entertaining
- Sparkling in-ground pool with open air alfresco overlooking
- Double lock-up garage with roller-door access
- Handy 1.2m x 2.4m garden shed
- 6kw solar electricity
- Low-maintenance yard with tidy landscaping
- Positioned in the sought-after Elevate Estate, close to all amenities

More About this Property

Property ID	1YAPGWH
Property Type	House
House Size	195 m2
Land Area	375 m2
Including	Air Conditioning Pool Dishwasher Outdoor Entertaining Built-in-Robes Remote Garage Solar Panels

Liza Neuss 0447 006 098

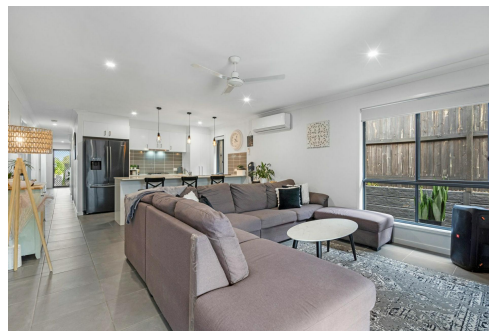
Sales Associate to Nicole Hintz Independent Contractor | liza@ljhgc.com.au

Nicole Hintz 0403 895 705

Director | L.R.E.A | Independent Contractor | nhintz@ljhgc.com.au

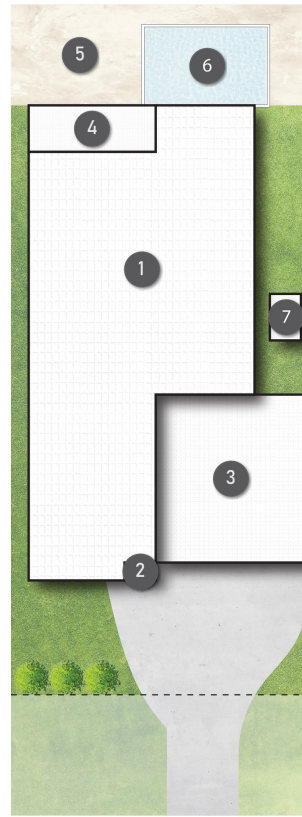
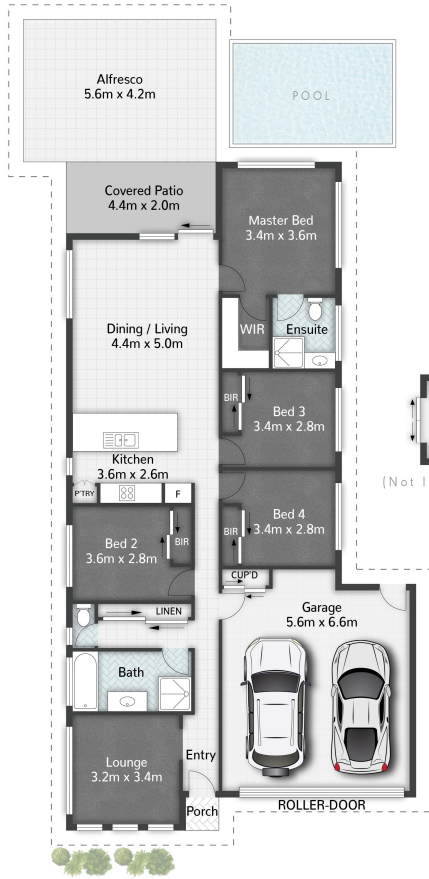
LJ Hooker Ormeau (07) 5549 4500

Unit 10 Norfolk Village Shopping Ctr, 170-174 Pascoe Road, ORMEAU QLD 4208
ormeau.ljhooker.com.au | ormeau@ljhgc.com.au



**LJ Hooker Ormeau
(07) 5549 4500**

Disclaimer: All information contained therein is gathered from relevant third parties sources. We cannot guarantee or give any warranty about the information provided. Interested parties must rely solely on their own enquiries.



LEGEND

- 1 RESIDENCE
- 2 PORCH
- 3 GARAGE
- 4 PATIO
- 5 ALFRESCO
- 6 POOL
- 7 SHED



92 Mccreadie Road ORMEAU HILLS

4 | 2 | 2 | 195m²



All dimensions are approximate; they are subject to errors and inaccuracies and no liability will be accepted. Plans are shown for marketing purposes only.