



58 River Run Circuit, Ormeau Hills


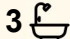
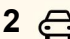
Designed for Family Living - Space, Comfort & Stunning Views

Located in a quiet, highly sought-after pocket, this quality four-bedroom home offers space, style, and convenience just 25 minutes from Surfers Paradise and 30 minutes to Brisbane.

Designed for family living, the home features generous proportions, multiple living areas, and seamless indoor-outdoor flow. The modern kitchen with stainless steel appliances overlooks the open-plan living and dining, extending to a covered entertaining area and large, fully fenced backyard.

Upstairs includes a third living space and a spacious master suite with walk-in robe, ensuite, parents' retreat, and private balcony with hinterland views. The remaining bedrooms are well-sized, with a two-way bathroom and direct access from the second bedroom.

With air conditioning, ample storage, and multiple spaces to relax or entertain, this move-in-ready home is perfect for families seeking comfort and convenience in a prime location.

4  3  2 

FOR SALE
Offers Over \$1,200,000

VIEW
By Appointment

AGENTS
Shelley Green
0477 790 660
sgreen@ljhg.com.au

Nicole Hintz
0403 895 705
nhintz@ljhg.com.au

AGENCY
LJ Hooker Ormeau
(07) 5549 4500

All information contained therein is gathered from relevant third parties sources.
We cannot guarantee or give any warranty about the information provided.
Interested parties must rely solely on their own enquiries.

 **LJ Hooker**

Features:

- 4 spacious bedrooms
- Master with ensuite, walk-in robe, parents' retreat & private balcony
- Second bedroom with direct access to two-way bathroom
- 3 separate living areas
- 2 study spaces (upstairs & downstairs)
- Modern kitchen with stainless steel appliances
- Open-plan living and dining
- 2 bathrooms + downstairs powder room
- Covered outdoor entertaining area
- Large, fully fenced backyard with multiple zones
- Air conditioning & ceiling fans throughout
- Ample storage, including under-stairs
- 900mm cooktop and oven

Location:

- Approx. 2 minutes to M1
- 25 minutes to Surfers Paradise
- 30 minutes to Brisbane

MORE DETAILS

Property ID	1YN1GWH
Property Type	House
House Size	188 m2
Land Area	392 m2

Shelley Green 0477 790 660

Sales Specialist | sgreen@ljhgc.com.au

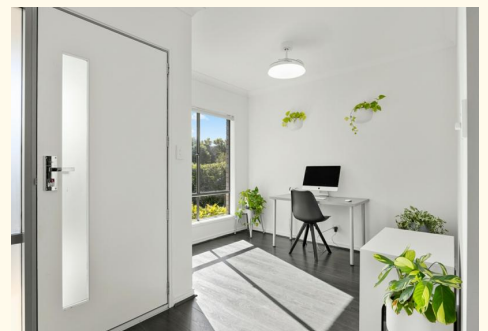
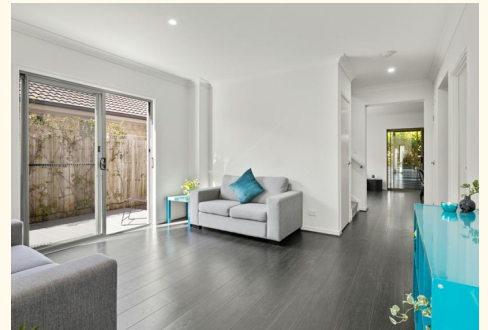
Nicole Hintz 0403 895 705

Director | L.R.E.A | Independent Contractor | nhintz@ljhgc.com.au

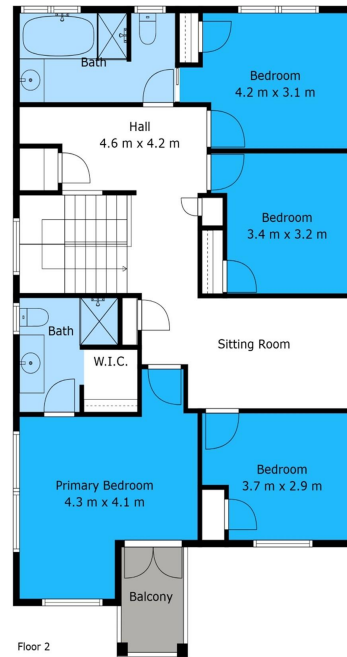
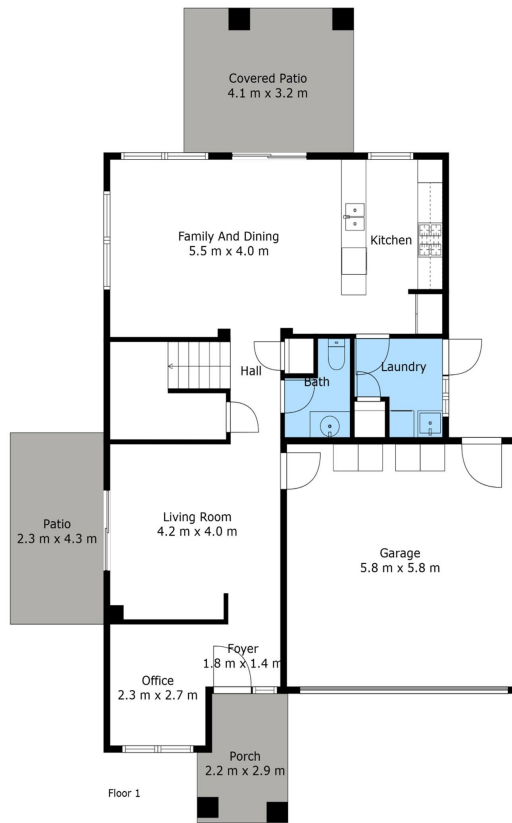
LJ Hooker Ormeau (07) 5549 4500

Unit 10 Norfolk Village Shopping Ctr, 170-174 Pascoe Road,
ORMEAU QLD 4208

ormeau.ljhooker.com.au | ormeau@ljhgc.com.au



58 River Run Circuit



	4
	2.5
	2

All information contained therein is gathered from relevant third parties sources. We cannot guarantee or give any warranty about the information provided. Interested parties must rely solely on their own enquiries.