



Ormeau Hills, 32 Landsdowne Drive

Contemporary Comfort with Elevated Entertaining

Located in the highly sought-after Ormeau Ridge Estate, this thoughtfully designed home strikes the perfect balance between functionality, style, and low-maintenance living. Set on a 400m² block directly across from the popular Hilltop Park, this is an ideal opportunity for families, professionals or investors seeking a well-connected lifestyle in a peaceful pocket.

Inside, you'll find a sleek and modern interior with neutral tones, tiled flooring, and a spacious open-plan layout. The kitchen is a standout with stone benchtops, gas cooktop, stainless steel appliances and loads of storage—all overlooking the light-filled living and dining space that flows seamlessly to the elevated alfresco deck.

The air-conditioned master suite offers a private retreat, complete with walk-in robe and ensuite. Three additional bedrooms are well-sized, and the central bathroom with separate toilet ensures everyday convenience. A flexible media room or potential 5th bedroom/study adds even more versatility to the floorplan.



For Sale
CONTACT AGENT

View
ljhooker.com.au/1YB5GWH

Contact
Nicole Hintz
0403 895 705
nhintz@ljhg.com.au

Liza Neuss
0447 006 098
liza@ljhg.com.au

LJ Hooker

Disclaimer: All information contained therein is gathered from relevant third parties sources. We cannot guarantee or give any warranty about the information provided. Interested parties must rely solely on their own enquiries.

LJ Hooker Ormeau
(07) 5549 4500

Step outside and enjoy the elevated alfresco deck with views over beautifully landscaped, terraced gardens-perfect for weekend BBQs or morning coffee.

Property Features:

- 400m² low-maintenance block
- 4 bedrooms, master with ensuite & WIR & air conditioning
- 2 bathrooms + separate toilet
- Open-plan living/dining with air conditioning
- Stylish kitchen with stone benches & gas cooktop
- Additional media room or study/5th bedroom
- Double garage with internal access
- Covered alfresco deck with views
- Beautiful, terraced landscaping at rear
- Built in 2014 - approx. 190m² under roof
- Positioned directly across the road from the popular Hilltop Park

Conveniently located just minutes from local schools, parks, shopping, and the M1, this home offers easy access to both Brisbane and the Gold Coast. Whether you're upsizing, investing or entering the market, this one ticks all the boxes.

More About this Property

| | |
|----------------------|--|
| Property ID | 1YB5GWH |
| Property Type | House |
| House Size | 190 m2 |
| Land Area | 400 m2 |
| Including | Air Conditioning Alarm Deck Dishwasher Outdoor Entertaining Built-in-Robes Remote Garage |

Nicole Hintz 0403 895 705

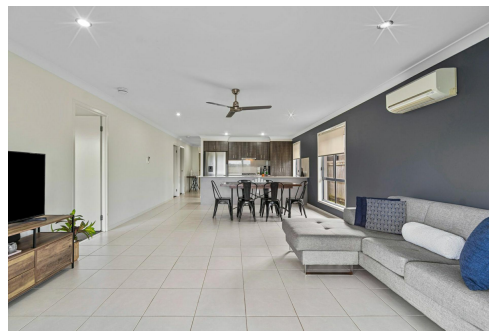
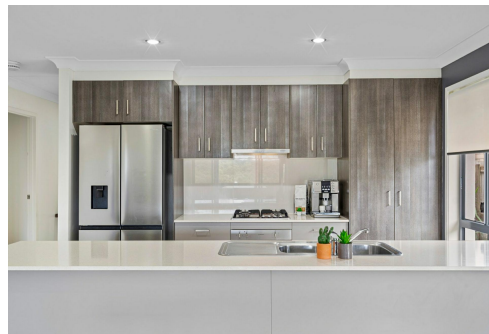
Director | L.R.E.A | Independent Contractor | nhintz@ljhgc.com.au

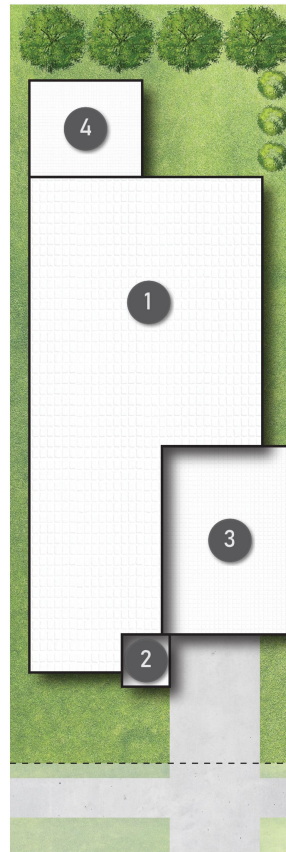
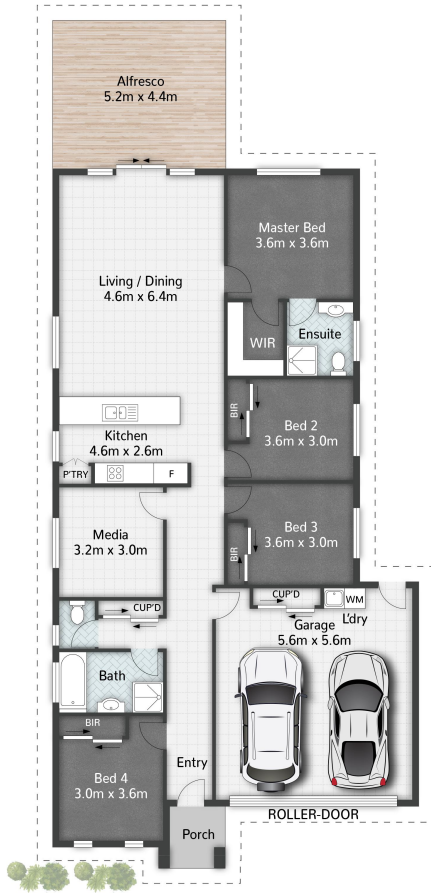
Liza Neuss 0447 006 098

Sales Associate to Nicole Hintz Independent Contractor | liza@ljhgc.com.au

LJ Hooker Ormeau (07) 5549 4500

Unit 10 Norfolk Village Shopping Ctr, 170-174 Pascoe Road, ORMEAU QLD 4208
ormeau.ljhooker.com.au | ormeau@ljhooker.com.au





LEGEND

- 1 RESIDENCE
- 2 PORCH
- 3 GARAGE
- 4 ALFRESCO



32 Landsdowne Drive ORMEAU HILLS

4 | 2 | 2 | 190m²



All dimensions are approximate; they are subject to errors and inaccuracies and no liability will be accepted. Plans are shown for marketing purposes only.