



Ormeau Hills, 22 Elvire Street

Luxury Living with Extra Ex-Display Home Features!

Step into 22 Elvire Street, Ormeau Hills, where warmth, style, and thoughtful design come together in a home that feels just right from the moment you arrive. Perfectly positioned on a spacious 502m² corner block, this stunning Orbit ex-display home is packed with premium upgrades that make everyday living a pleasure.

Designed with families and entertainers in mind, it offers a seamless blend of open-plan living, cozy retreats, and outdoor spaces that invite you to relax, host, and create lifelong memories. Whether it's the charm of the private balcony off the master suite, the heartwarming appeal of the chef's kitchen, or the sun-drenched deck perfect for weekend BBQs, every inch of this home has been crafted to enhance your lifestyle.

If you've been searching for a place that's more than just a house-but a home filled with love, comfort, and a little bit of luxury-then this is the one.



For Sale
CONTACT AGENT

View
ljhooker.com.au/1Y95GWH

Contact
Nicole Hintz
0403 895 705
nhintz@ljhg.com.au

Liza Neuss
0447 006 098
liza@ljhg.com.au

LJ Hooker

Disclaimer: All information contained therein is gathered from relevant third parties sources. We cannot guarantee or give any warranty about the information provided. Interested parties must rely solely on their own enquiries.

LJ Hooker Ormeau
(07) 5549 4500

Key Features:

- 502m2 corner block
- Orbit Ex Display Home Built in 2014
- 4 large bedrooms - Master suite with WIR, ensuite & private parent's retreat with balcony
- 2 bathrooms upstairs plus a powder room & full-sized vanity downstairs
- Ducted air-conditioning & alarm system for year-round comfort and security
- Dedicated study upon entry - perfect for a home office
- Designer kitchen with feature lighting, walk-in pantry, 900mm freestanding cooktop/oven & dishwasher
- Seamless indoor-outdoor living - dining flows onto a huge entertainers' deck
- Multiple living spaces: formal lounge, tiled family room & upstairs retreat
- Double lock-up garage with remote access

Positioned in a prime location, this elegant family home offers a spacious backyard and a perfect blend of lifestyle and convenience. Don't miss your chance to secure this premium property!

Contact us today to arrange your inspection.

More About this Property

Property ID	1Y95GWH
Property Type	House
Land Area	502 m2
Including	Study Alarm Balcony Deck Dishwasher Outdoor Entertaining Built-in-Robes Fully Fenced Remote Garage

Nicole Hintz 0403 895 705

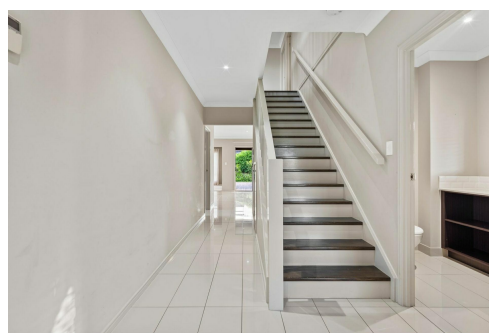
Director | L.R.E.A | Independent Contractor | nhintz@ljhgc.com.au

Liza Neuss 0447 006 098

Sales Associate to Nicole Hintz Independent Contractor | liza@ljhgc.com.au

LJ Hooker Ormeau (07) 5549 4500

Unit 10 Norfolk Village Shopping Ctr, 170-174 Pascoe Road, ORMEAU QLD 4208
ormeau.ljhooker.com.au | ormeau@ljhgc.com.au



**LJ Hooker Ormeau
(07) 5549 4500**

Disclaimer: All information contained therein is gathered from relevant third parties sources. We cannot guarantee or give any warranty about the information provided. Interested parties must rely solely on their own enquiries.



22 Elvire Street ORMEAU HILLS

4 | 2 | 2 | 287m²



All dimensions are approximate; they are subject to errors and inaccuracies and no liability will be accepted. Plans are shown for marketing purposes only.

LJ Hooker

**LJ Hooker Ormeau
(07) 5549 4500**

Disclaimer: All information contained therein is gathered from relevant third parties sources. We cannot guarantee or give any warranty about the information provided. Interested parties must rely solely on their own enquiries.