



17 Adelaide Crescent, Ormeau Hills

INVITING FAMILY RETREAT IN QUIET, CONNECTED NEIGHBOURHOOD

Privately positioned in a peaceful Ormeau Hills street, this beautifully presented family home delivers relaxed indoor-outdoor living with a warm, welcoming charm that instantly feels like home.

Designed around connection and comfort, the layout flows effortlessly from the central kitchen through multiple living zones and out to an expansive entertaining deck. Here, long summer lunches, evening BBQs and weekend gatherings are elevated by a sparkling in-ground pool and leafy outlook - creating your own private retreat.

Inside, the home blends character with modern comfort. The kitchen is a true heart-of-the-home space, featuring a large island bench, quality appliances and a timeless country-inspired finish that invites family and friends to gather. Multiple living areas provide flexibility for families of all sizes, while the master suite enjoys direct access to the outdoor entertaining zone - a peaceful escape at the end of the day.

With thoughtful updates, a functional floorplan and a strong emphasis on lifestyle, this is a home that has been lovingly cared for and is

4  2  2 

FOR SALE
CONTACT AGENT

AGENTS

Nicole Hintz
0403 895 705
nhintz@ljhgc.com.au

Liza Neuss
0447 006 098
liza@ljhgc.com.au

AGENCY

LJ Hooker Ormeau
(07) 5549 4500

All information contained therein is gathered from relevant third parties sources.
We cannot guarantee or give any warranty about the information provided.
Interested parties must rely solely on their own enquiries.

 **LJ Hooker**

ready for its next chapter.

Property Highlights

- Four well-proportioned bedrooms, including master with ensuite
- Multiple living zones offering flexibility for families
- Central kitchen with large island bench and quality appliances
- Seamless indoor-outdoor flow to expansive covered entertaining deck
- In-ground swimming pool framed by timber decking
- Two bathrooms, including ensuite bathroom with freestanding bath
- " Double lock-up garage with internal access
- " Approx. 400m² block with low-maintenance gardens
- " Approx. 256m² of internal living built in 2015
- Quiet, family-friendly Ormeau Hills location

MORE DETAILS

Property ID	1YJGGWH
Property Type	House
House Size	256 m2
Land Area	400 m2
Including	Pool Deck Dishwasher Outdoor Entertaining Built-in-Robes Remote Garage Solar Panels

Nicole Hintz 0403 895 705

Director | L.R.E.A | Independent Contractor | nhintz@ljhgc.com.au

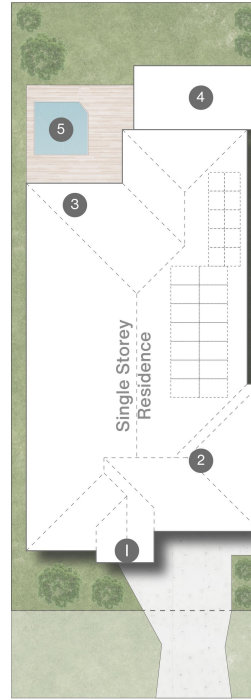
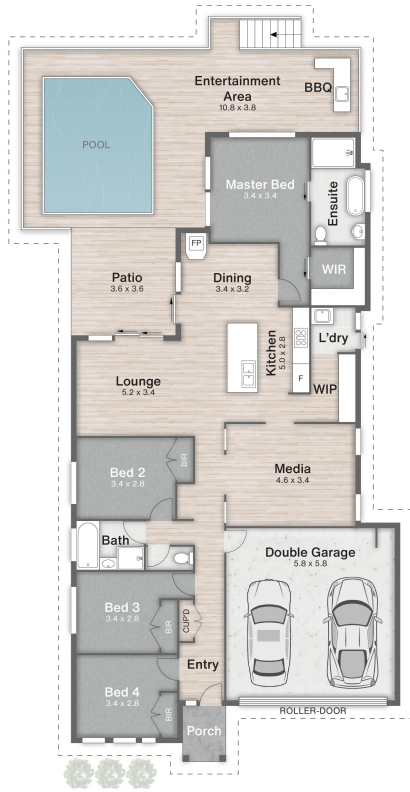
Liza Neuss 0447 006 098

Sales Associate to Nicole Hintz Independent Contractor | liza@ljhgc.com.au

LJ Hooker Ormeau (07) 5549 4500

Unit 10 Norfolk Village Shopping Ctr, 170-174 Pascoe Road,
ORMEAU QLD 4208
ormeau.ljhooker.com.au | ormeau@ljhgc.com.au





- 1 Porch
- 2 Garage
- 3 Patio
- 4 Entertainment
- 5 Pool

Adelaide Crescent

17 Adelaide Crescent **ORMEAU HILLS**

4 | 2 | 2 | 256m² | 400m²



DISCLAIMER
 This is not a legal document; all measurements and dimensions are approximate and are subject to errors, omission or misstatement. No liability will be accepted. Plans are shown for marketing purposes only.