



LJ Hooker Leppington | Austral



6 Match Place, Oran Park


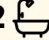

Quiet Cul-De-Sac Located Close To Town Centre

Set on a quiet street in the ever-growing community of Oran Park, this stylish single storey residence offers the perfect blend of luxury and practical family living.

From the moment you step inside, you're welcomed by light-filled interiors, quality finishes, and a thoughtfully designed layout that caters to both relaxed everyday living and seamless entertaining.

Features you'll love

- Chef's kitchen equipped with 40mm waterfall stone benchtops, premium 900mm stainless steel appliances, and a spacious walk-in pantry.
- Master suite includes a private ensuite and walk-in wardrobe, creating a relaxing retreat.
- Generously sized bedrooms with built-in wardrobes
- Well appointed main bathroom with contemporary fixtures
- Tiled living areas are complemented by elegant plantation shutters and energy-efficient downlights
- Private oasis featuring a beautiful timber decking BBQ area, surrounded by established gardens
- Other highlights include: security cameras, ducted air conditioning,

4  2  2 

FOR SALE
\$1,250,000

VIEW
By Appointment

AGENTS

Samuel Moscabenny
0448 649 817
smoscabenny.leppington@ljhooker.com.au

Chelsea Mifsud
0429 628 005
cmifsud.leppington@ljhooker.com.au

AGENCY

LJ Hooker Leppington | Austral
(02) 9606 4311

All information contained therein is gathered from relevant third parties sources.
We cannot guarantee or give any warranty about the information provided.
Interested parties must rely solely on their own enquiries.

LJ Hooker

garden shed, security screens

Everything you need is at your doorstep, with local schools, shopping and dining at Oran Park Podium, plus parks and open green spaces just moments away.

The upcoming Western Sydney International Airport nearby, this is a location that delivers both lifestyle and future upside.

Whether you're a family seeking space and comfort or an investor looking to secure a high-growth asset, this home ticks all the boxes.

Enquire today to arrange your inspection as this one won't last.

- Some images in this advertisement have been virtually furnished and are for illustrative purposes only. All areas and dimensions are approximates only.

Disclaimer: The above information has been furnished to LJ Hooker Leppington | Austral by the vendor/vendors legal representative. We have not verified whether or not that information is accurate, and do not have any belief one way or the other in its accuracy. LJ Hooker Leppington | Austral do not accept any responsibility to any person for its accuracy and do no more than pass it on. All interested parties should make and rely upon their own enquiries in order to determine whether or not this information is, in fact, accurate.

MORE DETAILS

Property ID	129GHCV
Property Type	House
Land Area	400 m2
Including	Ensuite
	Ducted Cooling
	Ducted Heating
	Alarm
	Deck
	Dishwasher
	Outdoor Entertaining
	Built-in-Robes
	Remote Garage

Samuel Moscabenny 0448 649 817

Licensed Sales Agent | smoscabenny.leppington@ljhooker.com.au

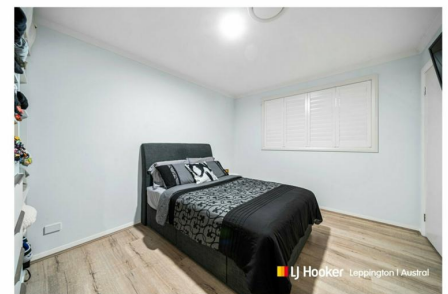
Chelsea Mifsud 0429 628 005

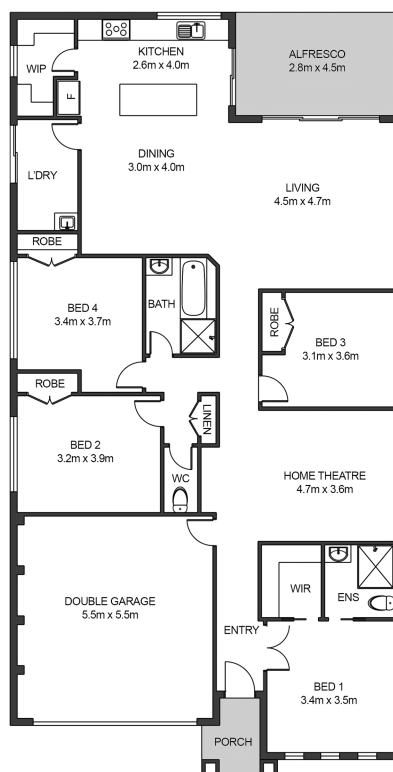
Licensed Sales Agent | cmifsud.leppington@ljhooker.com.au

LJ Hooker Leppington | Austral (02) 9606 4311

Leppington Village Shopping Centre, Shop GC1, 108-116 Ingleburn Road, LEPPINGTON NSW 2179

leppington.ljhooker.com.au | leppington@ljhooker.com.au





6 Match Place, Oran Park

Dimensions are approximate and should only be used as a guide. All information contained herein is gathered from sources we believe to be reliable. However, we cannot guarantee its accuracy and interested parties should rely on their own enquiries.