



## Omarama, 13 Pinot Noir Court

### Excellent Returns on Pinot Noir Court!

Introducing 13 Pinot Noir Court, where modern comfort meets scenic serenity! Nestled in the gateway to the Waitaki Valley, this 6-year-young home boasts the perfect blend of convenience and relaxation.

Step into a spacious modern abode featuring 3 bedrooms and 2 bathrooms, offering open-plan living for both residents and guests alike. With a contemporary design and bespoke detailing, this residence exudes a welcoming ambience from the moment you arrive.

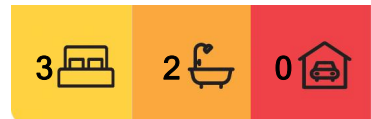
Year-round comfort is ensured with the inclusion of a heat pump, providing cozy warmth during the chilly winter months and refreshing coolness in the summer heat. Whether you're seeking a tranquil retreat or an adventure-filled getaway, this property caters to all your needs.

Ideal for holidaymakers, this home has been thoughtfully set up for short-term



**Disclaimer:** All information contained therein is gathered from relevant third parties sources. We cannot guarantee or give any warranty about the information provided. Interested parties must rely solely on their own enquiries.

**SOLD**



**For Sale**  
Enquiries Over \$750,000

**View**  
[ljhooker.co.nz/DSZH5T](http://ljhooker.co.nz/DSZH5T)

**Contact**  
**Karan MacDiarmid**  
027 517 7959  
karan@mcre.co.nz  
**Jess Mackay**  
027 902 5529  
jess@mcre.co.nz

**LJ Hooker Twizel**  
**(03) 435 0170**  
Mackenzie Country Real Estate

accommodation, making it a sought-after destination for visitors looking to unwind and rejuvenate. And here's the best part —the furniture is optional, giving you the flexibility to customise the space to your liking. Negotiate the details and make this home truly your own. Excellent returns are being achieved as a short term let. Please inquire with the team regarding the financials.

Don't miss out on the opportunity to own a slice of paradise in Omarama. Whether you're investing in a holiday retreat or a permanent residence, 13 Pinot Noir Court offers the perfect blend of comfort, convenience, and charm. Come and experience the essence of relaxation in this picture perfect location where boating and fishing is in abundance.

Contact Karan & Jess to see the property file and also to confirm a time to view as we will need to make an appointment due to forward bookings in place.

House Size: 138m2

Land Size: 858m2

## More About this Property

<b>Property ID</b>	DSZH5T
<b>Property Type</b>	House
<b>House Size</b>	138 m <sup>2</sup>
<b>Land Area</b>	858 m <sup>2</sup>

**Licensed Real Estate Agents (REAA2008)**

### **Karan MacDiarmid 027 517 7959**

Salesperson | [karan@mcre.co.nz](mailto:karan@mcre.co.nz)

### **Jess Mackay 027 902 5529**

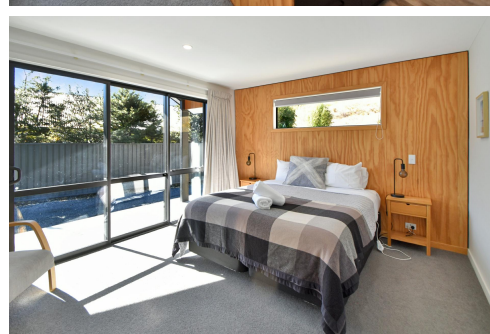
Salesperson | [jess@mcre.co.nz](mailto:jess@mcre.co.nz)

### **LJ Hooker Twizel (03) 435 0170**

Mackenzie Country Real Estate

20 Ruataniwha Road, TWIZEL 7901

[twizel.ljhooker.co.nz](http://twizel.ljhooker.co.nz) | [twizel@mcre.co.nz](mailto:twizel@mcre.co.nz)



**LJ Hooker Twizel**

**(03) 435 0170**

Mackenzie Country Real Estate

**Disclaimer:** All information contained therein is gathered from relevant third parties sources.

We cannot guarantee or give any warranty about the information provided. Interested parties must rely solely on their own enquiries.