

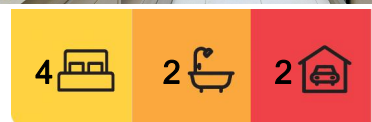
## Officer, 20 Shakespeare Grove

Prime Location, Perfect Family Living

Situated in a sought-after North Side pocket, this spacious and beautifully presented home offers the perfect blend of comfort, style, and convenience. Just moments from St Clare's Primary School and Learning Centre, St Francis Xavier College, parklands, and a range of fantastic local amenities, it's an ideal choice for families looking to settle in a vibrant and connected community.

### Property Features:

- \* Flexible floorplan offering 4 spacious bedrooms or 3 plus a study/additional living area
- \* Master suite with walk-in robe, private ensuite featuring dual vanity and an oversized shower
- \* Multiple living zones including:
  - \* Expansive open-plan family and meals area
  - \* Separate rumpus room
  - \* Optional formal lounge & perfect for entertaining or relaxing



**For Sale**  
Please Call

**View**  
[ljhooker.com.au/1Q0PFC9](http://ljhooker.com.au/1Q0PFC9)

**Contact**  
**Sam Paynter**  
0439 429 110  
[spaynter.pakenham@ljhooker.com.au](mailto:spaynter.pakenham@ljhooker.com.au)



**Disclaimer:** All information contained therein is gathered from relevant third parties sources. We cannot guarantee or give any warranty about the information provided. Interested parties must rely solely on their own enquiries.

**LJ Hooker Pakenham**  
**(03) 5943 8000**

- \* Designer kitchen with stone benchtops, 900mm gas cooktop, stainless steel oven and dishwasher, plus a generous butler's pantry
- \* Double remote garage with internal access
- \* Year-round comfort with ducted heating and evaporative cooling
- \* Solar electricity to reduce electricity bills
- \* Alfresco entertaining area ideal for hosting family and friends
- \* Low-maintenance backyard on a 400m<sup>2</sup> block – perfect for a busy lifestyle

This is a fantastic opportunity to secure a quality home in a prime location – ideal for growing families or savvy investors.

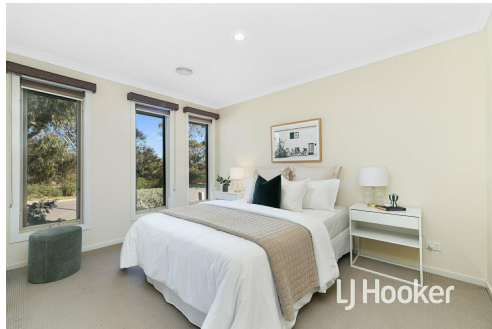
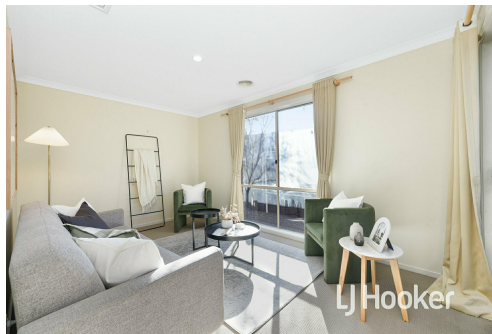
Please note: All property details listed were current at the time of publishing. Due to extreme buyer demand, some properties may have been sold in the preceding 24 hours. Therefore confirmation of all opens with the listing agent within 24 hours of their scheduled opening is advised.

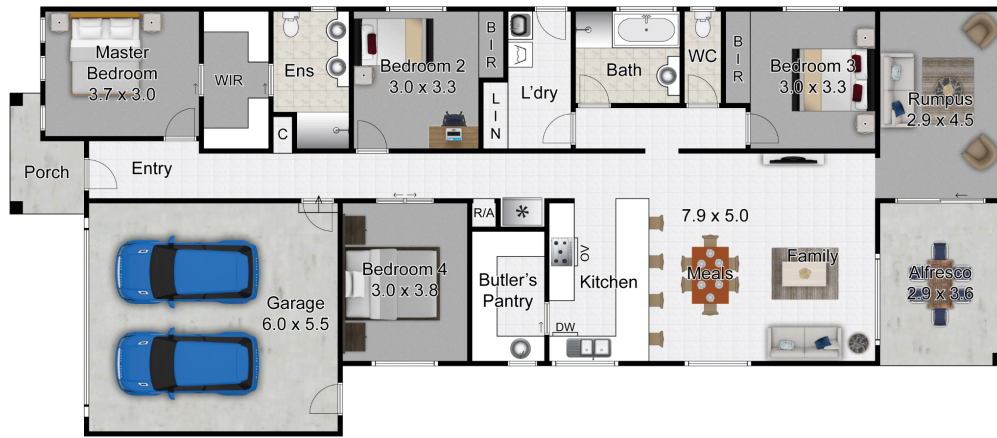
## More About this Property

Property ID	1Q0PFC9
Property Type	House
Land Area	400 m2
Including	Ensuite Ducted Heating Evaporative Cooling Dishwasher Outdoor Entertaining Built-in-Robes Secure Parking Fully Fenced Solar Panels

**Sam Paynter 0439 429 110**  
 Partner | Sales Specialist | Licensed Estate Agent |  
 spaynter.pakenham@ljhooker.com.au

**LJ Hooker Pakenham (03) 5943 8000**  
 45 John Street, PAKENHAM VIC 3810  
 pakenham.ljhooker.com.au | pakenham@ljhooker.com.au





This drawing is for illustrative purposes only and while every effort has been made to maintain accuracy, prospective purchasers should check all information