



SOLD



O'Connor, 7 Wattle Street

The Wonders of Wattle Street

Auction Location: Onsite

Attention, developers, knockdown rebuilders or those looking for an ideal location to call home!

In the sought-after suburb of O'Connor we present 7 Wattle Street —a huge corner block that beckons with its tantalizing potential.

Imagine the canvas stretched before you: an almost 1000 sqm expanse of opportunity awaiting your creative touch. With RZ4 zoning, this plot is a playground for your imagination, offering the perfect stage for your architectural dreams to unfold.

Alternatively, simply add your touch to this cozy little abode and enjoy the perks of an inner city lifestyle. With three large bedrooms, one bathroom, and two living areas, it's the



3	1	2
---	---	---

For Sale
Auction

View
ljhooker.com.au/1DXHFRF92

Contact
Ryan Hedley
0458 440 375
ryan.hedley@ljdickson.com.au

EER ★★★★★

LJ Hooker Dickson
(02) 6257 2111

Disclaimer: All information contained therein is gathered from relevant third parties sources. We cannot guarantee or give any warranty about the information provided. Interested parties must rely solely on their own enquiries.

perfect spot to let your inner decorator run wild. The well-kept sprawling backyard is brimming with promise, ripe for consideration of a bold extension.

Location becomes legend as you realize the treasures that lie within a 5-kilometer radius:

- Approx. 2 km to Australian National University (ANU)
- Approx. 3 km to Canberra Centre shopping mall
- Approx. 4 km to Lake Burley Griffin
- Approx. 5 km to Mount Ainslie lookout
- Approx. 5 km to National Gallery of Australia

This isn't just a property; it's a canvas for innovation, a sanctuary for visionaries, and a beacon of investment potential in one of Canberra's most coveted corners. Embrace the challenge, unleash your creativity, and make your mark at 7 Wattle Street O'Connor.

Property Features:

- Spacious living areas
- Large backyard with potential for landscaping or extension
- 996sqm block
- RZ4 territory planning - perfect for developers

Offers prior to auction are welcome.

More About this Property

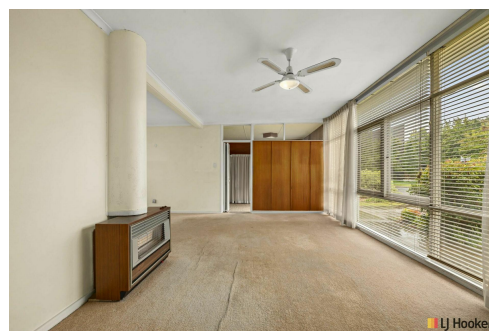
Property ID	1DXHFRF92
Property Type	House
House Size	113.52 m ²
Land Area	996 m ²
EER	1

Ryan Hedley 0458 440 375

Licensed Agent and Auctioneer ACT/NSW | Associate Director | ryan.hedley@ljhdickson.com.au

LJ Hooker Dickson (02) 6257 2111

36 Woolley Street, DICKSON ACT 2602
dickson.ljhooker.com.au | info@ljhdickson.com.au



Disclaimer: All information contained therein is gathered from relevant third parties sources. We cannot guarantee or give any warranty about the information provided. Interested parties must rely solely on their own enquiries.

**LJ Hooker Dickson
(02) 6257 2111**



The floor plan is not to scale; measurements are indicative and in metres. All features included in this 3D plan are for inspiration purposes only. This is not an exact replica of the property or the position of exterior elements. Plans should not be relied on. Interested parties should make and rely on their own enquiries.

7 Wattle Street, O'Connor

Produced by DIAKRIT