

Oceanview, 36B Jellicoe Street

Spectacular Living with Comfort and Style!

North-facing, spacious, and brand new, 36B Jellicoe Street delivers on every front with its stylish and thoughtful design. This home offers everything you've been searching for in a new build, including an oversized double garage, ample space for the family, and modern amenities. Don't miss out on this fantastic opportunity - schedule a viewing onsite today. The finishing touches are happening on this property, making it ready for its new owners.

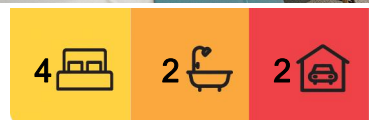
****Please note photos have been visually staged with furniture and similar styled blinds that property will have installed for new owner****

Key features:

- Four double bedrooms
- 225m2 floor area (more or less)
- North facing living and entertaining area
- Large double internal access garage



Disclaimer: All information contained therein is gathered from relevant third parties sources. We cannot guarantee or give any warranty about the information provided. Interested parties must rely solely on their own enquiries.



For Sale
Enquiries Over \$819,000

View
l.jhooker.co.nz/14WEGTA

Contact
Joelle Snook
027 844 5432
joelle.timaru@l.jhooker.co.nz

Ben Groundwater
027 415 6405
ben.timaru@l.jhooker.co.nz

LJ Hooker Timaru
(03) 688 3029
Enting Real Estate Limited

- Ensuite
- Walk-in wardrobe

Disclaimer:

This information has been supplied by the owners and Corelogic. LJ Hooker Timaru, Geraldine and Waimate are merely passing over this information as supplied to us. We cannot guarantee its accuracy and reliability as we have not checked, audited or reviewed the information. All intending purchasers are advised to conduct their own due diligence investigation into this information. To the maximum extent permitted by law, we do not accept any responsibility to any part for the accuracy or use of the information herein. Enting Real Estate Limited Licensed (REAA 2008).

More About this Property

Property ID	14WEGTA
Property Type	House
House Size	225 m ²
Land Area	550 m ²
Licensed Real Estate Agents (REAA2008)	

Joelle Snook 027 844 5432

Property Consultant | joelle.timaru@ljhooker.co.nz

Ben Groundwater 027 415 6405

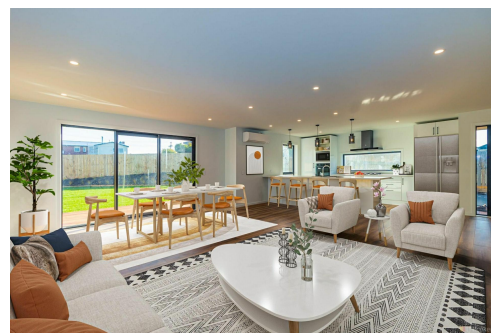
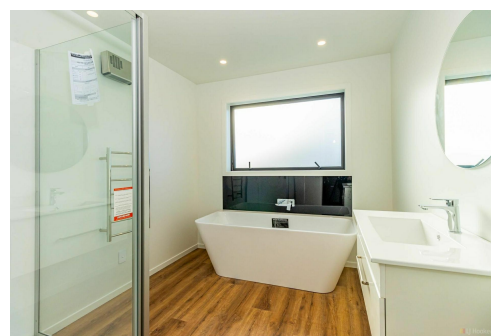
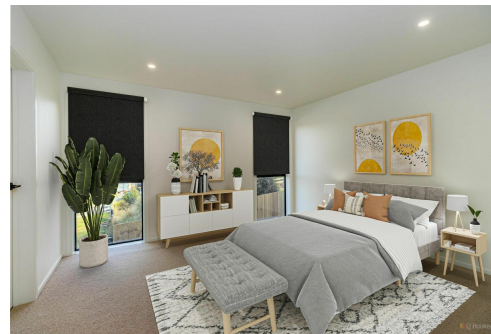
Property Consultant | ben.timaru@ljhooker.co.nz

LJ Hooker Timaru (03) 688 3029

Enting Real Estate Limited

51 Church Street, TIMARU 7910

timaru.ljhooker.co.nz | timaru@ljhooker.co.nz



Disclaimer: All information contained therein is gathered from relevant third parties sources. We cannot guarantee or give any warranty about the information provided. Interested parties must rely solely on their own enquiries.

LJ Hooker Timaru
(03) 688 3029
Enting Real Estate Limited