



## Oceanview, 34C Jellicoe Street

"Don't Let It Be The One That Gets Away"

This stylish new build features a double internal access garage, an ensuite, a walk-in wardrobe, and an open-plan kitchen with the living area opening out to views across the Hunter Hills. Located at 34C Jellicoe Street, this property is not only a brand new home but also has completed landscaping, ensuring you can move in and enjoy the upcoming summer months, entertaining on the north-facing deck.

\*Photos have been staged and blinds are examples of what will be installed for new owners\*

Features:

- Three double bedrooms
- Ensuite
- Walk-in wardrobe
- North-facing deck



**Disclaimer:** All information contained therein is gathered from relevant third parties sources. We cannot guarantee or give any warranty about the information provided. Interested parties must rely solely on their own enquiries.

3

2

2

**For Sale**

Enquiries Over \$649,000

**View**

[ljhooker.co.nz/152CGTA](https://ljhooker.co.nz/152CGTA)

**Contact**

**Joelle Snook**

027 844 5432

[joelle.timaru@ljhooker.co.nz](mailto:joelle.timaru@ljhooker.co.nz)

**LJ Hooker Timaru**

**(03) 688 3029**

Enting Real Estate Limited

- Bifold doors connecting indoor to outdoor
- Large double garage
- Purchaser having the option to choose from curtain sample colours, to be installed by settlement

Disclaimer:

This information has been supplied by the owners and Corelogic. LJ Hooker Timaru, Geraldine and Waimate are merely passing over this information as supplied to us. We cannot guarantee its accuracy and reliability as we have not checked, audited or reviewed the information. All intending purchasers are advised to conduct their own due diligence investigation into this information. To the maximum extent permitted by law, we do not accept any responsibility to any part for the accuracy or use of the information herein. Enting Real Estate Limited Licensed (REAA 2008).

## More About this Property

|  |         |
|--|---------|
| Property ID                            | 152CGTA |
| Property Type                          | House   |
| House Size                             | 180 m²  |
| Land Area                              | 550 m²  |
| Licensed Real Estate Agents (REAA2008) |         |

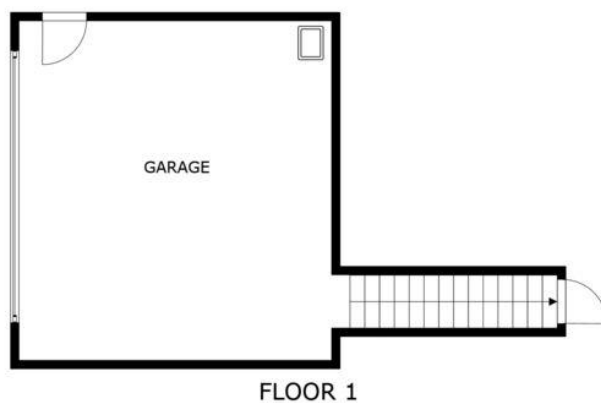
**Joelle Snook 027 844 5432**  
 Property Consultant | joelle.timaru@ljhooker.co.nz

**LJ Hooker Timaru (03) 688 3029**  
 Enting Real Estate Limited  
 51 Church Street, TIMARU 7910  
 timaru.ljhooker.co.nz | timaru@ljhooker.co.nz



**Disclaimer:** All information contained therein is gathered from relevant third parties sources. We cannot guarantee or give any warranty about the information provided. Interested parties must rely solely on their own enquiries.

**LJ Hooker Timaru**  
**(03) 688 3029**  
 Enting Real Estate Limited



SIZES AND DIMENSIONS ARE APPROXIMATE, ACTUAL MAY VARY.



**Disclaimer:** All information contained therein is gathered from relevant third parties sources.  
We cannot guarantee or give any warranty about the information provided. Interested parties must rely solely on their own enquiries.

**LJ Hooker Timaru**  
**(03) 688 3029**  
Enting Real Estate Limited