



14/49 Bettington Road, Oatlands

## RENOVATED TOWNHOUSE IN PRESTIGIOUS GATED COMPLEX

Set within one of Oatlands' most sought-after secure complexes, this fully renovated double brick townhouse offers refined living in a peaceful, private setting—just moments from elite schools, shops and Oatlands Golf Course.

Boasting spacious proportions across 180sqm (approx), this home features two oversized bedrooms with built-in wardrobes, including a master with walk-in robe and air conditioning. The beautifully renovated main bathroom is tiled floor-to-ceiling and includes a separate shower and bathtub.

Enjoy seamless indoor-outdoor living with tiled open-plan areas leading to a north-east facing undercover alfresco and sun-drenched paved courtyard—perfect for year-round entertaining.

### Key Features:

- Near new gas kitchen with stone benchtops, Westinghouse appliances, dishwasher & breakfast bar
- Separate air-conditioned lounge + dedicated dining area

All information contained therein is gathered from relevant third parties sources. We cannot guarantee or give any warranty about the information provided. Interested parties must rely solely on their own enquiries.

2 1 1

**FOR SALE**  
\$1,015,000

### AGENTS

Joseph Nasr  
0405 824 646  
Joseph.Nasr@ljhooker.com.au

Joe Guida  
0450 797 333  
joe.guida@ljhooker.com.au

### AGENCY

LJ Hooker Parramatta | Granville |  
Guildford | Merrylands  
(02) 9637 8555



- Floating floors to upper level, tiled downstairs
- Guest powder room + large internal laundry
- Remote lock-up garage with approx. 3.4m high ceilings & internal access
- Under-stair storage + large linen closet
- Secure gated complex with ample parking for visitors and residents.
- Common gated grassed kids playing area with communal BBQ

Prime Location:

Walk to Oatlands Golf Course, Oatlands House, local shops and elite schools including The King's School and Tara Anglican School for Girls. Easy access to Parramatta CBD, local parks and major arterial roads.

Council: \$389 p/q

Water: \$170.90 p/q

Strata: \$1,334.30 p/q

Registered age 1994

Total area size 180sqm approx.

## MORE DETAILS

Property ID	2FZ7F9E
Property Type	Townhouse
House Size	180 m2
Including	Study
	Air Conditioning
	Toilets (2)
	Built-in-Robes
	Close to Schools
	Close to Shops
	Close to Transport
	Security Access

**Joseph Nasr 0405 824 646**

Area Specialist | [Joseph.Nasr@ljhooker.com.au](mailto:Joseph.Nasr@ljhooker.com.au)

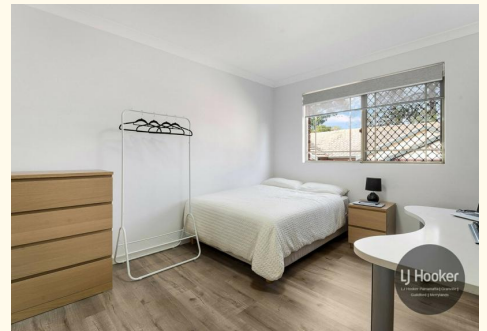
**Joe Guida 0450 797 333**

Sales Associate to Joseph Nasr | [joe.guida@ljhooker.com.au](mailto:joe.guida@ljhooker.com.au)

**LJ Hooker Parramatta | Granville | Guildford | Merrylands (02) 9637 8555**

42 South Street, GRANVILLE NSW 2142

[granville.ljhooker.com.au](http://granville.ljhooker.com.au) | [granville@ljhooker.com.au](mailto:granville@ljhooker.com.au)





All information contained herein is gathered from all sources we believe to be reliable. However we cannot guarantee its accuracy and interested parties should rely on their own enquiries.

# 14/49 Bettington Road, Oatlands

All information contained therein is gathered from relevant third parties sources. We cannot guarantee or give any warranty about the information provided. Interested parties must rely solely on their own enquiries.

