

22 North Ridge Drive, Oamaru North

NORTH RIDGE LIVING AT ITS BEST

Tucked away in the highly sought-after North Ridge Drive, this substantial Oamaru stone home is set on a generous 1,056m² section and framed by mature, established gardens that create a wonderful sense of privacy. Built in 2009, the home offers quality construction, generous proportions, and a layout designed to support comfortable family living.

A grand central entrance welcomes you into the home and leads through to the main living hub positioned along the northern side. Here, a spacious open-plan kitchen, dining, and living area provides an inviting space for everyday living and entertaining. Double glazing, a wood burner, and a heat pump ensure year-round comfort, while sliding doors extend the living area outdoors to a sunny patio, ideal for morning coffee, relaxed evenings, or summer BBQs.

The master bedroom is well appointed with a large walk-in wardrobe and ensuite. Three additional bedrooms all include wardrobes and are serviced by a well-designed family bathroom featuring both a wet-floor shower and a bathtub, complemented by an adjacent separate toilet. One bedroom offers an additional large storage cupboard, while another includes a fitted office setup, which can easily be removed if

4 2 3

FOR SALE

Buyer Enquiry Over \$1,049,000

VIEW

By Appointment

AGENTS

Stephen Robertson

0274 731 112

stephenr@ljhoamaru.co.nz

AGENCY

LJ Hooker Oamaru

(03) 434 9014

Robertson Real Estate Limited

All information contained therein is gathered from relevant third parties sources.
We cannot guarantee or give any warranty about the information provided.
Interested parties must rely solely on their own enquiries.

LJ Hooker

not required.

Practicality continues with a central vacuum system and a laundry positioned within the garage, offering convenient access to the backyard. The triple internal-access garage provides excellent storage and workspace, with the bonus of a rear roller door allowing easy drive-through access, great for trailers, tools, or garden equipment.

Outside, the property is fully fenced and surrounded by established gardens, creating a secure and peaceful environment for children and pets to enjoy. Offering privacy, space, and comfort in one of Oamaru's most desirable neighbourhoods, this quality Oamaru stone home is one not to be missed.

Buyer Enquiry Over \$1,049,000

Contact Stephen Robertson on 0274 731 112

MORE DETAILS

Property ID	W4WGF3
Property Type	House
House Size	270 m2
Land Area	1056 m2
Licensed Real Estate Agents (REAA2008)	

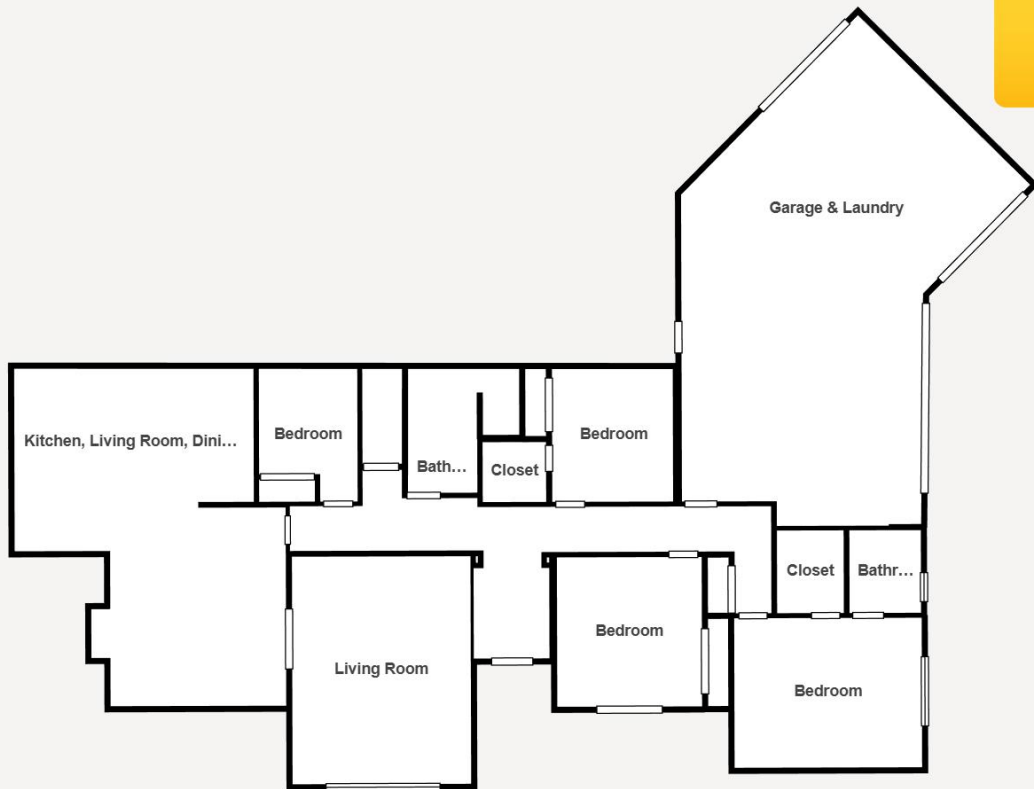
Stephen Robertson 0274 731 112

Principal / Property Consultant | stephenr@ljhoamaru.co.nz

LJ Hooker Oamaru (03) 434 9014

Robertson Real Estate Limited
193 Thames Street, OAMARU 9400
oamaru.ljhooker.co.nz | info@ljhoamaru.co.nz





Floor Plan - 22 North Ridge Drive

Floor plan is illustrative only & not to scale