

22 North Ridge Drive, Oamaru North

PRIVATE, PRACTICAL, PERFECTLY POSITIONED

Tucked away in the sought-after North Ridge Drive, this Oamaru stone home is positioned on a generous 1,056m² section, built in 2009, framed by mature gardens creating an exceptional sense of privacy.

Step inside and be welcomed by a grand entrance at the centre of the home, the living hub is located down the North side of the home, with a spacious open-plan kitchen, dining, and living areas, designed for easy family living and effortless entertaining.

Warmed by both a wood burner and a heat pump with double glazing, the living area flows seamlessly through sliding doors to a sunny outdoor patio - ideal for morning coffee or evening BBQs.

The Master with a large walk-in wardrobe & ensuite, while the other 3 bedrooms have wardrobes and share the well appointed family bathroom with a wet floor shower and bathtub.

An additional large storage closet in one of the bedrooms, while an office fitout is in another, creating convenience, although it can be easily removed.

4 2 3

FOR SALE

Buyer Enquiry Over \$1,095,000

VIEW

Sat 17th Jan @ 1:30PM - 2:00PM

AGENTS

Stephen Robertson

0274 731 112

stephenr@ljhoamaru.co.nz

AGENCY

LJ Hooker Oamaru

(03) 434 9014

Robertson Real Estate Limited

All information contained therein is gathered from relevant third parties sources.
We cannot guarantee or give any warranty about the information provided.
Interested parties must rely solely on their own enquiries.



A central vacuum system & the laundry in the garage, with access to the backyard are practical features of this home. For those needing storage or workspace, the triple internal-access garage provides ample room, with the bonus of a rear roller door offering easy drive-through access to the backyard - perfect for trailers, tools, or garden gear.

Outside, the property is fully fenced and framed by established gardens, creating a safe, secure, and serene setting for both children and pets to enjoy.

If you're seeking comfort, space, and peace in one of Oamaru's most desirable neighbourhoods, this Oamaru stone home is a must see.

Buyer Enquiry Over \$1,095,000

Contact Stephen Robertson on 0274 731 112

MORE DETAILS

Property ID	W4WGF3
Property Type	House
House Size	270 m2
Land Area	1056 m2
Licensed Real Estate Agents (REAA2008)	

Stephen Robertson 0274 731 112

Principal / Property Consultant | stephenr@ljhoamaru.co.nz

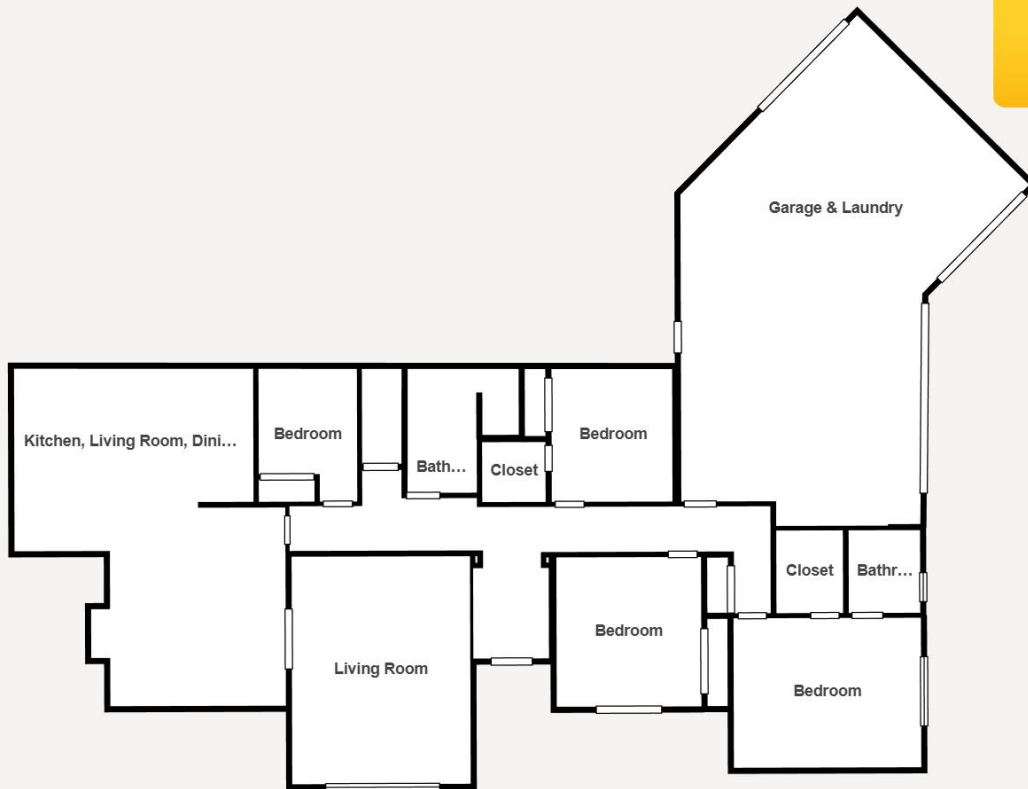
LJ Hooker Oamaru (03) 434 9014

Robertson Real Estate Limited

193 Thames Street, OAMARU 9400

oamaru.ljhooker.co.nz | info@ljhoamaru.co.nz





Floor Plan - 22 North Ridge Drive

Floor plan is illustrative only & not to scale