



10, 14, 16, 18 & 20 Tui Lane, Oamaru North

ENJOY THE BEST OF MODERN DAY LIVING

Modern day living is made easy here at 10, 14, 16 or 20 Tui Lane. These properties are immersed with functionality, class, and quality to ensure a lifestyle that exceeds expectations.

Enjoy the features found throughout these simply stunning homes:

- Walk In Pantry
- Storage lined hallway
- Outdoor decking area
- Various exterior claddings
- Fisher & Paykel appliances
- Quality hardware throughout
- North/West facing properties
- Internally accessed double garage
- Open plan living, dining, and kitchen
- Firman kitchen, with stone bench top
- 3 bedrooms with built in double wardrobes
- North End location close to all essential amenities
- Master bedroom features an ensuite and walk in robe
- Designated parking for your boat, camper van, or caravan

3 2 2

FOR SALE

Buyer Enquiry Over \$785,000

VIEW

By Appointment

AGENTS

Stephen Robertson

0274 731 112

stephenr@ljhoamaru.co.nz

AGENCY

LJ Hooker Oamaru

(03) 434 9014

Robertson Real Estate Limited

All information contained therein is gathered from relevant third parties sources. We cannot guarantee or give any warranty about the information provided. Interested parties must rely solely on their own enquiries.



Act now and choose the best property for you and yours to enjoy the ease of modern day living.

Buyer Enquiry Over \$785,000

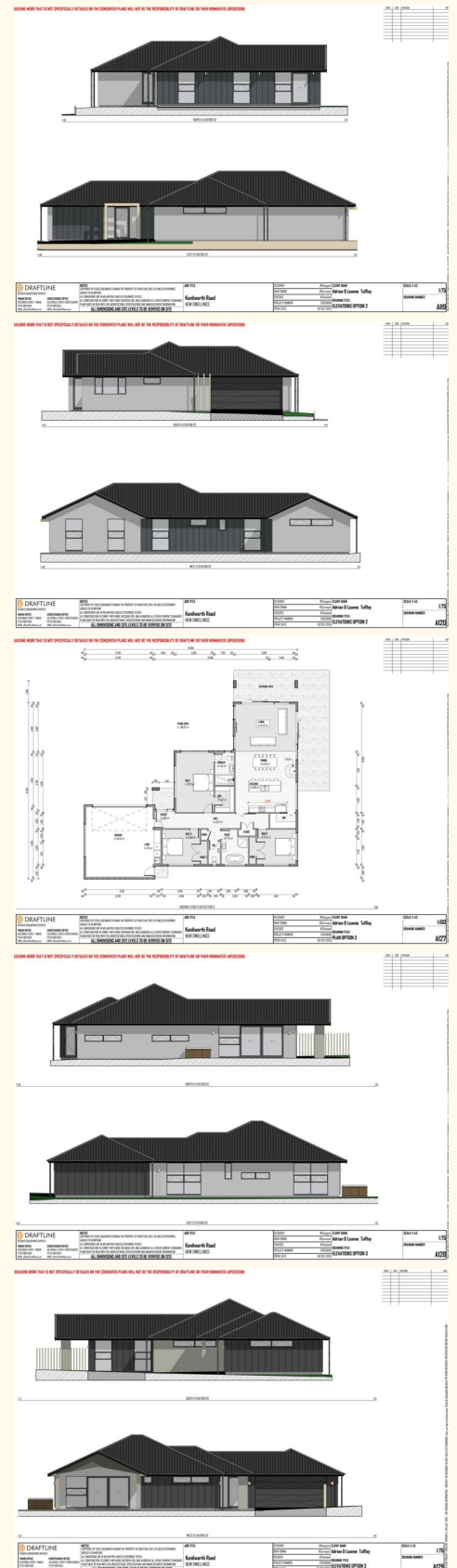
Contact Stephen Robertson at 0274 731 112

MORE DETAILS

Property ID VA4GF3
Property Type House
House Size 199 m2
Land Area 619 m2
Licensed Real Estate Agents (REAA2008)

Stephen Robertson 0274 731 112
Principal / Property Consultant | stephenr@ljhoamaru.co.nz

LJ Hooker Oamaru (03) 434 9014
Robertson Real Estate Limited
193 Thames Street, OAMARU 9400
oamaru.ljhooker.co.nz | info@ljhoamaru.co.nz



All information contained therein is gathered from relevant third parties sources. We cannot guarantee or give any warranty about the information provided. Interested parties must rely solely on their own enquiries.