



Lot 3 Homestead Road, Oamaru

LUXURY LIVING REDEFINED

Designed with contemporary style & exceptional scale in mind, this thoughtfully considered home presents an outstanding opportunity for those looking to build a refined, modern residence


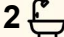

Spanning approximately 338m², the proposed design offers generous proportions throughout, including four well-sized bedrooms, with a master suite featuring a walk-in wardrobe & ensuite. Multiple living areas provide flexibility for modern lifestyles, with a light-filled open-plan kitchen, dining, & living zone at the heart of the home, complemented by a separate media room.

The kitchen is designed for both functionality & style, with expansive bench space & seamless flow for entertaining. Floor-to-ceiling windows and ranch sliders maximise natural light & indoor-outdoor connection.

A dedicated study adds versatility, while a family bathroom, separate WC, & ample storage ensure everyday practicality. The design also incorporates an internal access double garage & separate laundry.

An additional three bay shed adds convenience.

Designed to reflect quality & modern living, this is a well-considered

4  2  5 

FOR SALE

Price Upon Application

VIEW

By Appointment

AGENTS

Stephen Robertson
0274 731 112
stephenr@ljhoamaru.co.nz

AGENCY

LJ Hooker Oamaru
(03) 434 9014
Robertson Real Estate Limited

All information contained therein is gathered from relevant third parties sources.
We cannot guarantee or give any warranty about the information provided.
Interested parties must rely solely on their own enquiries.

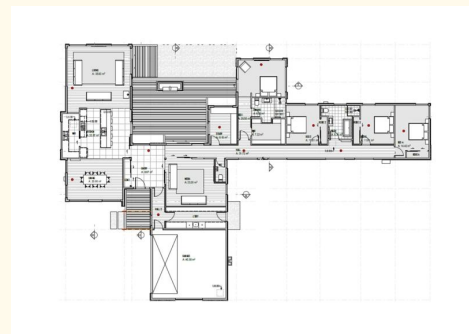


house design ready to be brought to life, offering the chance to secure a premium new build tailored to your vision.

Subject to new title issue.

MORE DETAILS

Property ID WB0GF3
Property Type Lifestyle
House Size 338 m²
Land Area 1 hectare
Licensed Real Estate Agents (REAA2008)



Stephen Robertson 0274 731 112

Principal / Property Consultant | stephenr@ljhoamaru.co.nz

LJ Hooker Oamaru (03) 434 9014

Robertson Real Estate Limited
193 Thames Street, OAMARU 9400
oamaru.ljhooker.co.nz | info@ljhoamaru.co.nz