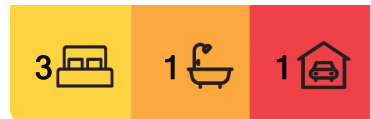




## Oamaru, 9 Queens Crescent

### SOUTH HILL HAVEN



Our vendors are on the move, presenting you with a wonderful opportunity to make this South Hill property your new home.

Recently refurbished throughout, this residence features polished timber floors that seamlessly guide you through the open-plan living, dining, and kitchen area - ideal for family gatherings or entertaining guests.

Each of the three bright bedrooms provides a private place to enjoy after a long day, with two rooms equipped with wardrobes for your storage needs. The family bathroom has been tastefully renovated, creating a fresh and inviting atmosphere.

The clever layout of this home includes a spacious laundry area, a garage converted into a versatile utility room downstairs (equipped with a heat pump).

With underfloor and ceiling insulation, a log burner, and three heat pumps, you'll



**Disclaimer:** All information contained therein is gathered from relevant third parties sources. We cannot guarantee or give any warranty about the information provided. Interested parties must rely solely on their own enquiries.

**For Sale**  
Buyer Enquiry Over \$489,000

**View**  
[ljhooker.co.nz/VC6GF3](https://ljhooker.co.nz/VC6GF3)

**Contact**  
**Stephen Robertson**  
0274 731 112  
[stephenr@ljoamaru.co.nz](mailto:stephenr@ljoamaru.co.nz)

**Sheryl Heta**  
027 414 5256  
[sherylh@ljoamaru.co.nz](mailto:sherylh@ljoamaru.co.nz)

**LJ Hooker Oamaru**  
**(03) 434 9014**  
Robertson Real Estate Limited

experience comfort all year round.

The backyard showcases a generous outdoor seating space, and a separate sun-soaked deck perfect for enjoying the outdoors, providing ample room for you and your loved ones to unwind and enjoy the scenery.

Located at 9 Queens Crescent, this beautiful family home is conveniently situated near essential amenities. Don't miss your chance - enquire today to secure your piece of South Hill serenity!

Buyer Enquiry Over \$489,000

Contact Stephen Robertson at 0274 731 112 or Sheryl Heta at 0274 145 256

## More About this Property

<b>Property ID</b>	VC6GF3
<b>Property Type</b>	House
<b>House Size</b>	113 m <sup>2</sup>
<b>Land Area</b>	842 m <sup>2</sup>
<b>Licensed Real Estate Agents (REAA2008)</b>	

### Stephen Robertson 0274 731 112

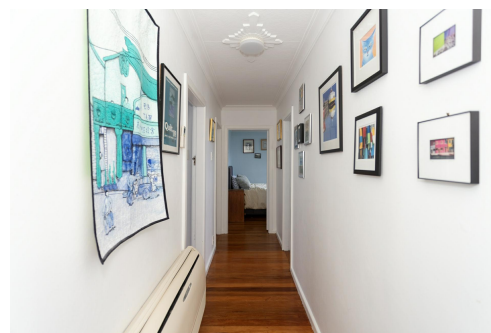
Principal / Property Consultant | [stephenr@ljoamaru.co.nz](mailto:stephenr@ljoamaru.co.nz)

### Sheryl Heta 027 414 5256

Property Consultant | [sherylh@ljoamaru.co.nz](mailto:sherylh@ljoamaru.co.nz)

### LJ Hooker Oamaru (03) 434 9014

Robertson Real Estate Limited  
193 Thames Street, OAMARU 9400  
[oamaru.ljhooker.co.nz](http://oamaru.ljhooker.co.nz) | [info@ljoamaru.co.nz](mailto:info@ljoamaru.co.nz)



**Disclaimer:** All information contained therein is gathered from relevant third parties sources. We cannot guarantee or give any warranty about the information provided. Interested parties must rely solely on their own enquiries.

**LJ Hooker Oamaru**  
**(03) 434 9014**  
Robertson Real Estate Limited