



2 🏠 2 🚿 1 🚗

FOR SALE

Inspection By Appointment Only
\$700,000-\$750,000

VIEW

By Appointment

AGENTS

Kobe Li
0434 566 941
kli.rowville@ljhooker.com.au

AGENCY

LJ Hooker City Residential
(03) 9600 2166

All information contained therein is gathered from relevant third parties sources.
We cannot guarantee or give any warranty about the information provided.
Interested parties must rely solely on their own enquiries.

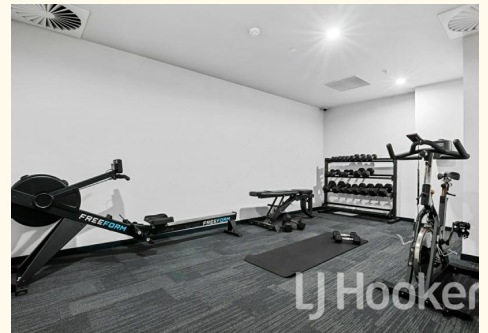
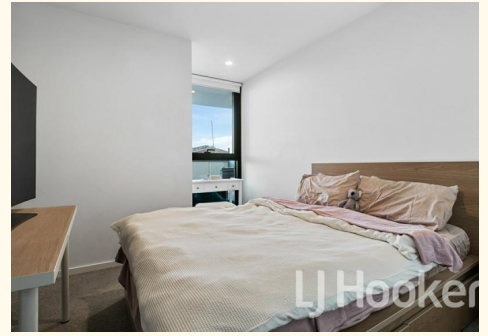


MORE DETAILS

Property ID NXUHC2
Property Type Apartment

Kobe Li 0434 566 941
| kli.rowville@ljhooker.com.au

LJ Hooker City Residential (03) 9600 2166
Upper Ground Floor, 439-445 Lonsdale St, MELBOURNE VIC 3000
cityresmelbourne.ljhooker.com.au |
cityresmelbourne@ljhooker.com.au





Total Area: 111.9 m²
 Internal Area: 70m²
 Outside Area: 41.9m²

THIS PLAN IS NOT TO SCALE. MEASUREMENTS ARE INDICATIVE AND IN METRES. SITE PLAN REFLECTS APPROXIMATE POSITION OF BUILDINGS ON PROPERTY ONLY AND IS NOT AN ACCURATE REPRESENTATION OF VEGETATION AND OTHER EXTERNAL LANDSCAPE FEATURES. THIS PLAN SHOULD NOT BE RELIED UPON AND INTERESTED PARTIES SHOULD MAKE THEIR OWN ENQUIRIES.

floorpik by scandipik