



65 Blattman Avenue, Oakdale

## Modern Designer Acreage with Future Potential on 39.54 Acres\*


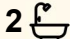
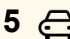
LJ Hooker United Group invites you to embrace a lifestyle of space, style, and possibility with this impressive owner-built residence set on approximately 39.54 acres\* (16 ha\*) of lush land - ideal for truck operators, acreage lovers, or those seeking future development potential^.

Showcasing a grand fae and wide double-door entry, this modern family haven boasts generous proportions throughout, multiple living zones, and stunning rural views. The home's contemporary interiors feature high-quality finishes, wide hallways, and expansive glass framing the enormous open-plan kitchen, dining and living areas that flow seamlessly to the outdoor area with pizza oven.

Set back from the road for privacy with a lush front lawn and sweeping countryside outlooks, this exceptional property offers luxurious family living with endless potential.

Property highlights:

- Owner-built designer home (built 2013).
- Gourmet kitchen with stone benchtops, gas cooktop, double wall ovens, integrated coffee machine & oversized pantry.
- King-size master suite with huge walk-in robe & luxury ensuite featuring double shower, double vanity & impressive round bathtub.

4  2  5 

**FOR SALE**

Offers Above \$3,300,000

**VIEW**

By Appointment

**AGENTS**

Melinda Bargallie

0429 858 321

[melinda@ljhunitedgroup.com.au](mailto:melinda@ljhunitedgroup.com.au)

Charlie Cini

0404 018 222

[charlie@ljhunitedgroup.com.au](mailto:charlie@ljhunitedgroup.com.au)

**AGENCY**

LJ Hooker United Group

1800 486 4833

All information contained therein is gathered from relevant third parties sources. We cannot guarantee or give any warranty about the information provided. Interested parties must rely solely on their own enquiries.

 **LJ Hooker**

- Multiple living areas including media room with projector screen and cinema seating plus games room.
- Feature sandstone fireplace in living room as well as modern pendant lighting and ornate cornices.
- Large main bathroom with double vanity, bathtub & floor-to-ceiling tiles.
- Spacious laundry with built-in storage.
- 12 m x 20 m\* shed currently used as a parents' retreat.
- Triple garage with remote doors.
- Ducted air-conditioning, surveillance cameras & double electric gated entry.
- Two 30,000 L\* water tanks, town water available, septic system & rural fencing.

• Approx.

^ Subject to Council Approval.

Webpage enquiries must include a contact number and email address to receive a response. Photo ID is required for all inspections. While care has been taken in presenting this information, prospective purchasers should confirm details independently.

## MORE DETAILS

|               |                   |
|---------------|-------------------|
| Property ID   | CCJ1T             |
| Property Type | AcreageSemi-rural |
| Land Area     | 39.54 acre        |

**Melinda Bargallie 0429 858 321**

Sales Executive | melinda@ljhunitedgroup.com.au

**Charlie Cini 0404 018 222**

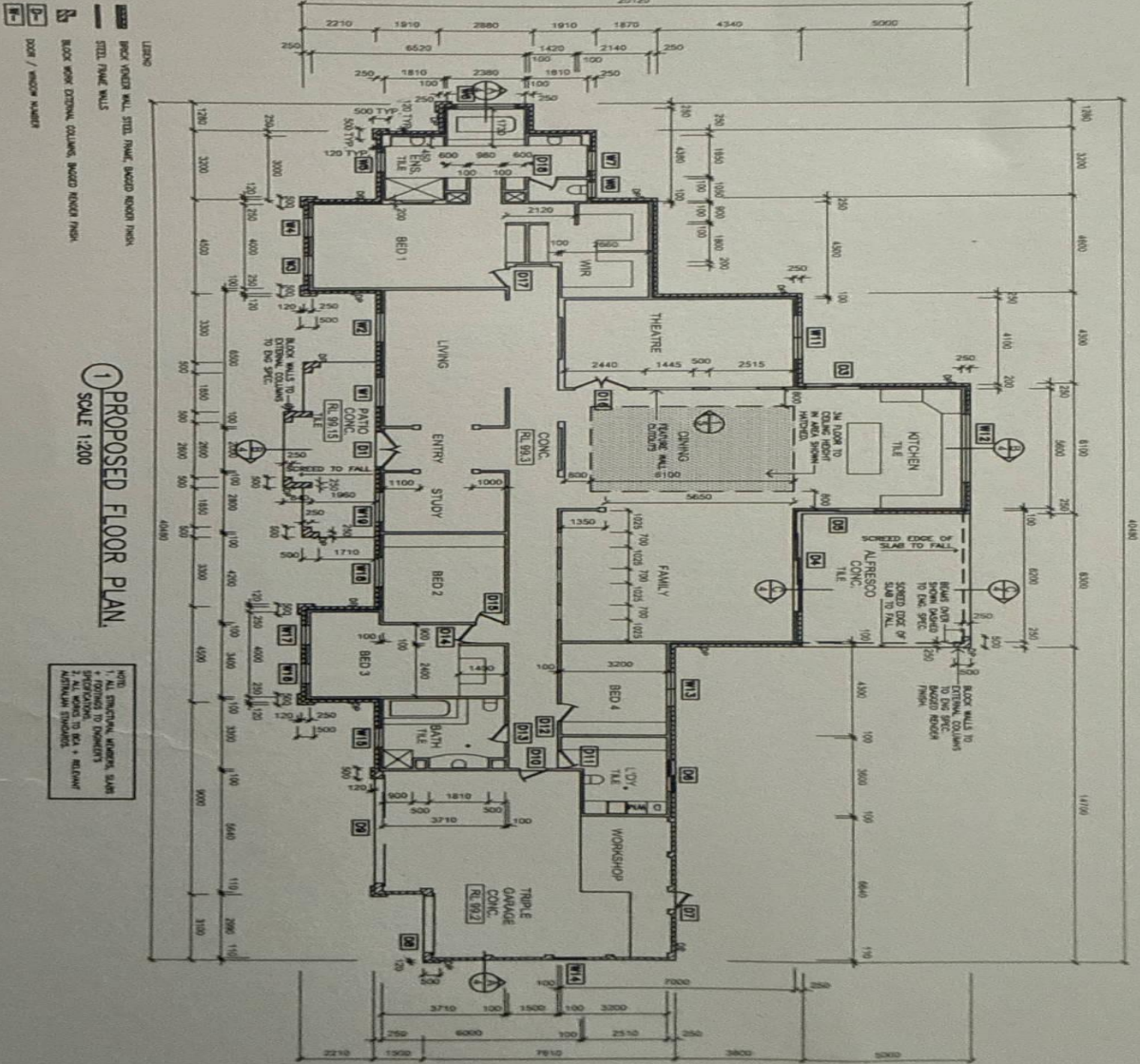
Sales Executive | charlie@ljhunitedgroup.com.au

**LJ Hooker United Group 1800 486 4833**

41 Wentworth Road, BRINGELLY NSW 2556

unitedgroup.ljhooker.com.au | reception@ljhunitedgroup.com.au





All information contained therein is gathered from relevant third parties sources.  
We cannot guarantee or give any warranty about the information provided.  
Interested parties must rely solely on their own enquiries.