



Nundah, 13/33 Atthow Parade

BOUTIQUE, LUXURY APARTMENT LIVING WITH LIFT!

Discover modern living at its finest in this private, stylish and spacious apartment. Boasting an open-plan design, the living and dining area seamlessly flows to a generous covered balcony, perfect for entertaining family and friends.

Ideally situated within walking distance to Nundah Villages cafes, restaurants, pubs, supermarkets and so much more. Short stroll to Nundah and Toombul train stations, this luxurious apartment offers unparalleled convenience. With Brisbane Airport and Chermside Westfield Shopping Centre just a 10-minute drive away, you can reach the CBD in under 15 minutes.

Key Features:

- * Light-filled private rear corner apartment
- * Freshly painted interior and brand new carpets



Disclaimer: All information contained therein is gathered from relevant third parties sources. We cannot guarantee or give any warranty about the information provided. Interested parties must rely solely on their own enquiries.

SOLD

2

2

1

For Sale

OFFERS

View

ljhooker.com.au/1AVUF4N

Contact

Richard Mirosch

0414 512 776

richard.mirosch@ljhooker.com.au

LJ Hooker Stafford
(07) 3357 1888

- * Open-plan kitchen with stone top breakfast bar and dishwasher
- * 2 bedrooms with air, generous walk through robes and en-suites to each bedroom
- * Separate powder room
- * Self-contained internal laundry
- * Airy living and dining area with airconditioning and ceiling fan
- * Tiled living area with new carpeted bedrooms
- * A luxurious tiled entry foyer with intercom security
- * Lift access
- * Secure car parking
- * Body corporate fees: Admin Fund \$629.47 per quarter and Sinking Fund \$545 per quarter
- * Sinking Fund Balance: \$111,890.04 as of 31/10/22 and insurance \$827 per annum
- * Rental potential \$620- \$640 per week
- * Vacant and ready to move in

Location:

- * Walking distance to Nundah Village shops
- * 7 km drive to Brisbane Airport
- * Well connected to public transport
- * Just minutes to Toombul Rail and Bus interchange
- * 10 km to Brisbane CBD
- * Easy access to M7 Tunnel
- * Close to parkland

Don't miss out — schedule your viewing today to make this exceptional boutique apartment yours!

More About this Property

Property ID	1AVUF4N
Property Type	Apartment
House Size	140 m²
Including	Air Conditioning Toilets (3) Intercom Deck Dishwasher

Richard Mirosch 0414 512 776
Principal | richard.mirosch@ljhooker.com.au

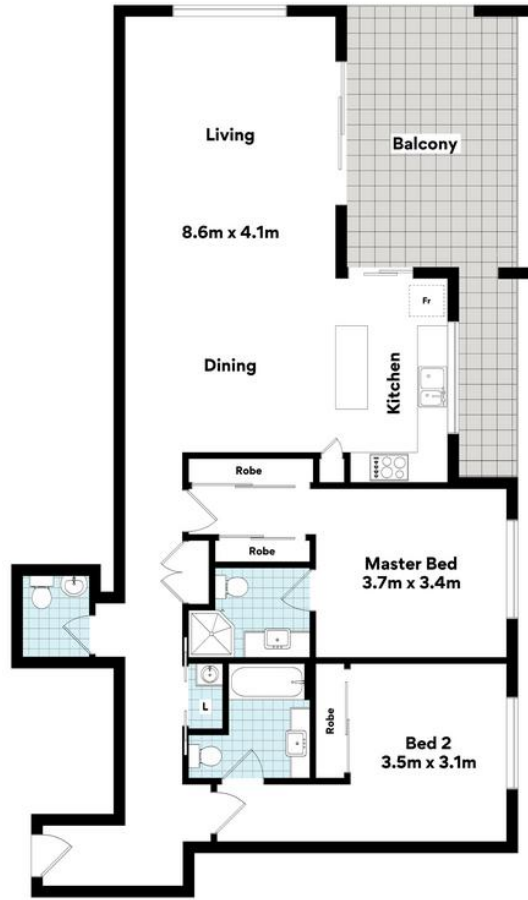
LJ Hooker Stafford (07) 3357 1888
205 Stafford Road, STAFFORD QLD 4053
stafford.ljhooker.com.au | stafford@ljhooker.com.au



Disclaimer: All information contained therein is gathered from relevant third parties sources. We cannot guarantee or give any warranty about the information provided. Interested parties must rely solely on their own enquiries.



LJ Hooker Stafford
(07) 3357 1888



13/33 Atthow Pde, Nundah



FLOOR AREA SIZES
Internal 118m² | External 22m²
Car Space 13m²
TOTAL 153m²

Whilst every attempt has been made to ensure the accuracy of the floor plans contained here, measurements of doors, windows, rooms and any other items are approximate and no responsibility is taken for any error, omission or misstatement.

These plans are for representation purposes only. Provided by primepixels.com.au